

RC.NO. 82/10507/98

COLLECTOR'S OFFICE,
KHAMMAM, DT. 01.02.'99.

From
SRI A. GIRIHAR, IAS.,
District Collector, Khammam.

To
The Mandal Revenue Officer,
YELLANDI.

Sir,

SUB: - LAND - ALLOTMENT OF LAND TO DEGREE COLLEGE at Yellandi
Town - handing-over the land - Reg.

REF: - Director, Personnel Administration & Welfare Lr. NO.
EM/TC/43/90/132, Dt. 27.1.99.

I invite your attention to the reference cited
(Copy enclosed) in which the M/s. The Singareni Collieries
Company Limited authorities have been pleased to agree to
handover Acc. 10.00 of Government leased to M/s. The
Singareni Collieries Company Limited in Sy. NO. 609 at Yellandi
for construction of Degree College building at Yellandi
bounded by: -

North: Private land in Sy. NO. 603 (A 778 20 FT.)

South: Company & open land in Sy. NO. 609 C D 890.74 FT.)

East: Company & open land in Sy. NO. 609 (AD. 730.96 FT.)

West: Company & Internal road (AC. 751.63 FT.)

I therefore request you to contact the Chief
General Manager (Project) Yellandi Area, and take over possession
immediately and on taking over, the same may be handed over to the
Principal, Degree College, Yellandi under cover of Panchanama
and report compliance by 5.2.'99.

I also request you to get the requisition forms from
the Principal, Degree College, Yellandi and submit regular
transfer proposals by 15.2.'99.

Encls: (1) only.

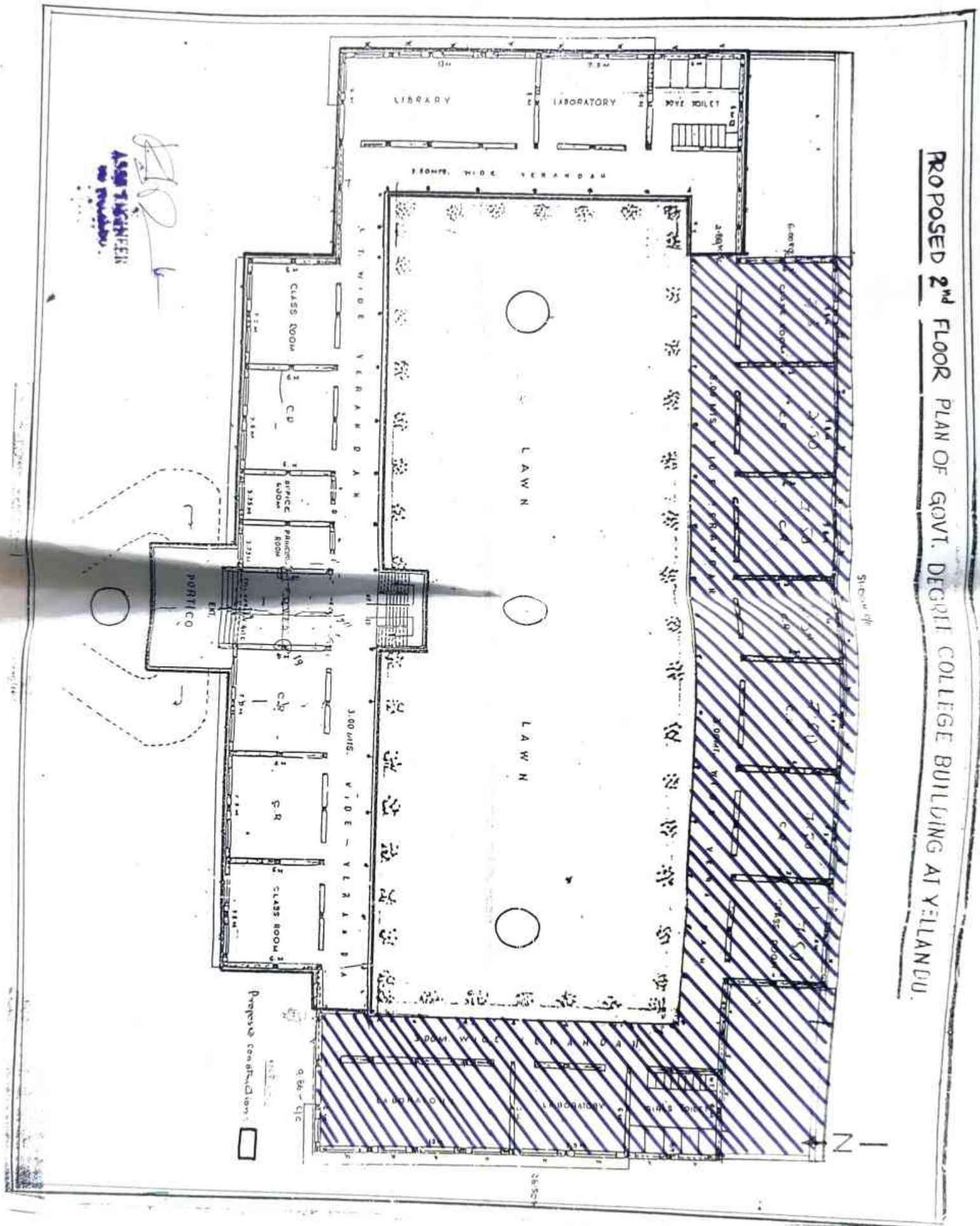
Yours faithfully,
Sd/- L. SASHIHAR,
for Collector, Khammam.

/s/ CLERK/

S. S. S.
SUPERINTENDENT

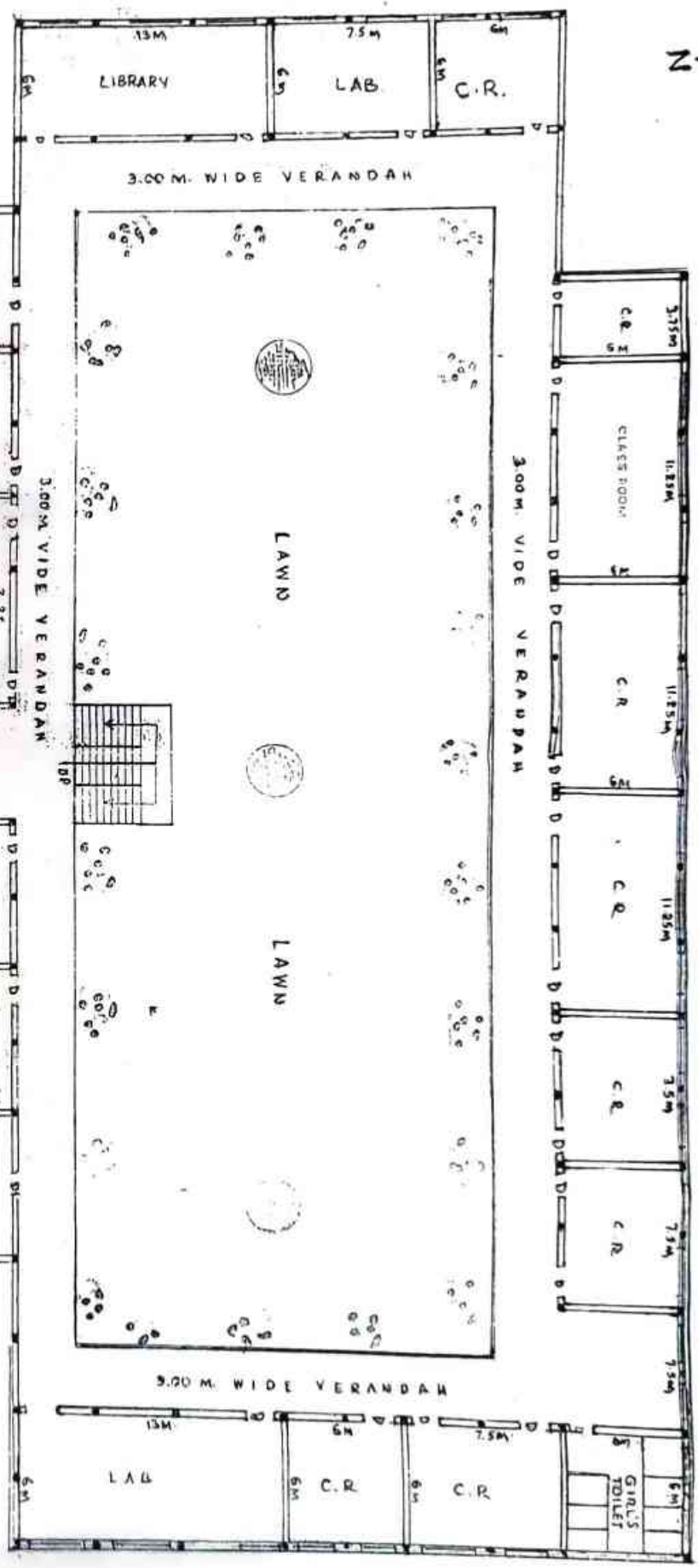
1. Copy to the Director, Personnel, Administration and Welfare
M/s. The Singareni Collieries Company Limited, Kothagudem.
2. Copy to the Chief General Manager (Project), Yellandi Area
Yellandi for necessary action.
3. Copy to the Revenue Divisional Officer, Kothagudem for
information.
4. Copy to the Principal, Degree College, Yellandi with a
request to submit the transfer proposals in the requisite
form duly contacting the Mandal Revenue Officer, Yellandi
by 10.2.99 under intimation to this office.

PROPOSED 2ND FLOOR PLAN OF GOVT. DEGRIT COLLEGE BUILDING AT YELLANDU.



ASST. ENGINEER
YELLANDU

PLAN OF GOVT. DEGREE COLLEGE BUILDING AT YELLANDU.



PHASE
PHASE

Name of the work: - Strengthening of Govt., Degree College (ACRs) at Yellandu, Yellandu(M) in Bhadradri kothagudem District.

GENERAL ABSTRACT

Sl.No.	Description of Item	Amount
1	DEGREE COLLEGE BUILDING	
a)	Civil Works	
i	Ground Floor	1,86,60,065
i	First Floor	1,28,45,597
ii	Terrace Floor	3,72,663
	Sub Total	3,18,78,325
b)	Internal & External Sanitary & Water Supply Arrangements	13,14,777
c)	Internal & External Electrification	25,50,266
d)	Sump	7,26,710
e)	Septic Tank	15,09,211
	Total (ECV) :	3,79,79,289
2	Provision for Labour Cess @ 1%	3,79,793
3	Provision for NAC @ 0.1%	37,979
4	Provision for PS charges @ 5%	18,98,964
5	Provision for QC charges @ 0.5%	1,89,896
6	Provision for Seignorage Charges @1% on Civil Works	3,18,783
7	Provision for Consultancy Charges @1% excluding GST	3,79,793
	Sub Total :	4,11,84,497
8	Provision for GST @ 18% on sub total	74,13,209
9	Provision towards Borewell & Pump set	5,00,000
10	Provision towards variation in quantities, Price adjustment, unforeseen & Rounding off.	9,02,294
	GRAND TOTAL	5,00,00,000

AE / AEE, TSEWIDC,
Section : Yellandu.

Dy. Exec. Engineer, TSEWIDC,
Sub Division: Bhadradri
Kothagudem.

P. Padma
PRINCIPAL
Govt. Degree College
Yellandu-507 123.
Bhadradri Kothagudem Dist

Executive Engineer, TSEWIDC,
Division: Bhadradri Kothagudem.