

SELF STUDY REPORT

2012 -13

Submitted to

NATIONAL ASSESSMENT AND ACCREDITATION COUNCIL
BANGALORE



GOVERNMENT DEGREE COLLEGE,
KORATLA, DIST: KARIMNAGAR - 505326
ANDHRA PRADESH – INDIA

GOVERNMENT DEGREE COLLEGE, KORATLA

Dist: Karimnagar (A.P.) - 505 326.



STEERING COMMITTEE CHAIRMAN

Dr. R.RAMAIHAH, M.Com., M.Phil., Ph.D.,

Principal

Contact No. : +91 9885281329

STEERING COMMITTEE CO-ORDINATOR

Dr. P.DINAKAR

M.A., M.Phil., Ph.d., B.Ed., PGDTE

Lecturer in English

Contact No. : +91 9959711849

College Website: www.gdckoratla.com

E-Mail: knr.gdckorutlajkc@gmail.com

Phone: 08725 252160

(TRACK ID FOR CYCLE – I : APCOGN15526)



GOVERNMENT DEGREE COLLEGE KORATLA

DIST: KARIMNAGAR – 505326, A.P.

E-Mail ID: knr.gdckorutlajkc@gmail.com

Phone No. 08725 252160

(Affiliated to Satavahana University, Karimnagar.)

Dr. R.RAMAIAH, M.Com, M.Phil, Ph.D.,
Principal

Date: - 05 -2013.

CERTIFICATE OF COMPLIANCE

This is to certify that **Government Degree College, Koratla, Dist.Karimnagar, A.P.** fulfils all norms

1. Stipulated by the affiliating University and/or
2. Regulatory Council/Body [such as NCTE, AICTE, MCI, DCI, BCI, etc] and
3. The affiliation and recognition is valid as on date.

In case the affiliation / recognition is conditional, then a detailed enclosure with regard to compliance of conditions by the institution will be sent.

It is noted that NAAC's accreditation, if granted, shall stand cancelled automatically, once the institution loses its University affiliation or Recognition by the Regulatory Council, as the case may be.

In case the undertaking submitted by the institution is found to be false then the accreditation given by NAAC is liable to be withdrawn.

The undertaking given to NAAC is displayed on the college website.

PRINCIPAL



GOVERNMENT DEGREE COLLEGE KORATLA

DIST: KARIMNAGAR – 505326, A.P.

E-Mail ID: knr.gdckorutlajkc@gmail.com

Phone No. 08725 252160

(Affiliated to Satavahana University, Karimnagar.)

Dr. R.RAMAIAH, M.Com, M.Phil, Ph.D.,
Principal

Date: - 05 -2013.

DECLARATION

I hereby declare that the information presented in the Self Study Report submitted to NAAC, Bangalore for Assessment and Accreditation is true to the best of my knowledge and it is prepared by the institution after internal discussions, and no part thereof has been outsourced. I am aware that the peer team will validate the information provided in this SSR during the peer team visit.

PRINCIPAL

Acknowledgements

It is a matter of pride that our institution with the strength of about 680 Students has offered itself for assessments and accreditation by NAAC this year i.e. 2012-2013. A rigorous self examination and introspection by the academicians working in this institution will no doubt lead to the improvement of quality of education imparted to the student community of Koratla region. Through the self study report we intend to focus an integrated and compact profile of the institution. A project of this proposition could only be the outcome of the cumulative efforts made by a group of inspired, dedicated staff and the students of the college functioning under the expert guidance and constant support of The Commissionerate of Collegiate Education, Hyderabad.

We are extremely indebted to The Commissioner of Collegiate Education Smt. K. Sunitha, I.A.S. for inspiring us to work with devotion and dedication to accomplish the set task. We are also grateful to Smt. Smitha Sabharwal, the District Collector, Sri. K. Vidya Sagar Rao, Hon'ble Local M.L.A., The Alumni , The C.P.D.C., The Parents Association, the former Principals and The Joint Director of the Collegiate Education and all the members of the Academic Cell, for their invaluable advice and guidance in the preparation of the Self Study Report.

Assessment by NAAC enables to identify the extent of merits and the quality of our institution in all fields of activity. It would go a long way in helping us to conceive, prepare and plan our programmes intended to pursue standards of excellence in Higher Education in the district of Karimnagar. Under their able guidance and co-operation we are sure to correlate our programmes to the changing needs of the student community.

We assure you that we would all relentlessly strive hard to provide and promote need-based qualitative education in this district and ensure maintenance of academic standards in this institution with a view to play an important role in the overall growth and progress of the local community.

INDEX

Content	Page No.
A. Preface	i-ii
B. Executive Summary	1-12
C. Profile of the Institution	13-21
D. Criteria-wise analytical report	
I. CURRICULAR ASPECTS	22-30
II. TEACHING-LEARNING AND EVALUATION	31-52
III. RESEARCH, CONSULTANCY AND EXTENSION	53-64
IV. INFRASTRUCTURE AND LEARNING RESOURCES	65-76
V. STUDENT SUPPORT AND PROGRESSION	77-88
VI. GOVERNANCE, LEADERSHIP AND MANAGEMENT	89-103
VII. INNOVATIONS AND BEST PRACTICES	104-108
E. Evaluative Report of the Departments	109-186
F. Annexures	
i. College Building Plan	187
ii. College Building Plan in Future	188

PREFACE

Education helps individuals for their all round development. India has diversified education system. Higher education has spread its roots through various means like introducing need based courses and add-on courses. *The NATIONAL ASSESSMENT AND ACCREDITATION COUNCIL (NAAC)* was established in 1994 as an autonomous institution of the University Grants Commission (UGC) to improve academic standards of the higher education institutions in the country. It advocates suitable plans, accredits the agencies and envisages the quality assurance is an integral part of Higher Education Institutions. The NAAC has a vision to make quality the defining element of higher education in India through a combination of self and external quality evaluation, promotion and sustenance initiatives. It has been trying to materialize the vision into its action plan. The plan includes periodic assessment and accreditation of institutions of higher education, to promote academic environment, accountability, autonomy and innovations in higher education.

The Higher Education Institutions are needed to change their vision, mission and objectives according to the present needs of the stakeholders. It should work in the light of globalization. It is under the impact of technology, and new trends and methods. NAAC has formulated certain core points to achieve the challenges and changes in higher education. The assessment & accreditation by NAAC can be done on the basis of the five core values of Contributing to National Development, Fostering Global Competencies among Students, Inculcating a Value System among Students, Promoting the Use of Technology, Quest for Excellence.

In view of the above said core values GDC KORATLA has a vision and mission to adapt the latest developments in the field of higher education. It has a clear goal in human resource development and capacity building. It has the objectives of having social justice and ensuring equity. In view of the above circumstances the institution is ready to go for assessment this year. The institution deems it a privilege to assess its strengths and weaknesses so as to put it on the path of quality enhancement. The stakeholders of the

institution are very keen on bringing quality improvement by subjecting the institution to undergo the process of assessment and accreditation.

The establishment of Govt. Degree College, Koratla is the result of intellectual awakening of the people. As there no institution of Higher Education was in the vicinity, a dire need to have a place for higher learning was felt. It was materialized in 1981. The college has grown into a vibrant organization for the all-round development of students especially for the underprivileged sections of the society. It has grown by leaps and bounds fulfilling the needs of several students. It has won the laurels as one of the premier institutions in the rural part of Karimanagar. The college has the campus of 25 acres. The college began in 1980s with initial strength of 60 students each in B.A. & B.Com courses. Now the strength has increased to 680 students with B.A (T/M&U/M), B.Com (General & Comp. Appl.), B.Sc (BZC, MPC & MPCS) courses. The college has 11 Regular Lecturers, 1 Part-time Lecturer, 5 Contract Lecturers, 2 Guest Faculty and 1 JKC Mentor.

The college has separate laboratories for Botany, Zoology, Physics and Chemistry. B.A course is offered in Urdu Medium also to fulfill the needs of the minority community. B.Sc (MPCs) and B.Com (Comp. Appl) courses are being offered under self financing system. The college has made its humble endeavor to live up to the aspirations and hopes of a number of students who pursue their higher studies on the campus. We have the following supporting services which include Library, MANA TV, Physical Education, National Service Scheme (NSS), Consumer Club, Women Empowerment Cell, Anti-Ragging Committee, Grievances & Redressal Committee, Special Training Programme (STP), e-Class, Hostel facility for women (under construction), SDLCE, Kakatiya University, Warangal study centre.

The institution has opted for assessment by NAAC; a self-study report is prepared wherein on the basis of SWOC analysis. It describes the Strength, Weakness, Opportunities and Challenges. The principal aim of the assessment is to provide focus on self-evaluation and self-improvement of the resources of the institution. The SSR tries to project achievements, responsibilities, limitations and progression of the institution.

EXECUTIVE SUMMARY

EXECUTIVE SUMMARY

CRITERION I: CURRICULAR ASPECTS

The vision, mission and objectives of the institution are communicated to the stakeholders through the students hand book, wall writing, college website and the induction class at the commencement of the academic year.

The affiliating university designs the curriculum and the faculty members of the institution add additional curricular inputs and plan extracurricular activities to cover the missing areas of the goals set forth. The curriculum is divided into self-contained modules to facilitate easy understanding by the students.

Teachers of the institution receive academic support from Sathavahana University, Karimnagar, Academic Cell of CCE, AP, Hyderabad, various Academic Staff Colleges.

The institution analyses and ensures that the stated objectives of the curriculum are achieved through the periodic review meetings and follow-up action.

The institution offers training programme in Communication and Soft Skills, Analytical Skills and Technical Skills to the students through Jawahar Knowledge Centre.

The institution offers B.Com. (Computer Applications) and B.Sc.(M.P.Cs.) under self-financed programmes to improve computer skills, practical exposure and employability.

The institution has SDLCE (School of Distance Learning and Continuing Education) study centre of Kakatiya University which provides an opportunity to the students who cannot afford regular studies to continue the higher studies

In addition to the existing curriculum additional inputs are given by the lecturers as per the need and utility. Some of our lecturers who are members of various

Boards of Studies are also contributing their inputs for modifications or enrichment of the curriculum.

The institution collects feedback from the stakeholders and analyzed for representing the findings to the university (which designs the curriculum) through our staff on Boards of Studies.

The quality of the institution's enrichment programmes are evaluated through the Unit Tests, assignments and terminal examinations held by the institution and the Annual and Supplementary examinations held by the University.

CRITERION II: TEACHING –LEARNING AND EVALUATION

The criteria adopted for admission to various programmes is merit alone besides reservation rules framed by the state government.

In order to maintain the objective of social equilibrium the reservation policy is implemented transparently in admission of backward class students (SC/ST/BC/Minority/ the differently abled) which is as per the stipulated guidelines, reservation rules and regulations laid by the concerned authority.

The institution has introduced new courses i.e. B.Com. (Computer Applications) and B.Sc (Computer Science), on the basis of demand-ratio analysis.

The institution identifies and evaluates the students' competency level and their needs before commencement of each programme through their previous performance and through the details given in their profiles.

Different strategies such as tutorial classes, class material, career counselling etc. are drawn and deployed by the institution to bridge the knowledge gap of the enrolled students to enable them to cope with the programme of their choice.

The institution sensitizes its staff and students on issues such as gender, inclusion, environment etc. through various activities like celebrating the international days, organizing Debates, Group Discussions, Elocutions, Essay Writing, awareness programmes to maintain and sustain the environment.

The institution identifies the slow learners as well as advanced learners by indicators like their marks, responses, behavior, skills, and provides need based guidance, material, special classes, remedial classes and other opportunities.

The institution maintains the standards in the system by ensuring that the academic calendar, teaching plan and evaluation blue print are properly followed. The learning and evaluation is done from the beginning through the final examinations.

The institution provides for the student centric learning through many different ways like using audio-visual aids, Tutorials and Doubts clarifying classes, Remedial coaching, Projector & Computer Based Teaching (CBT), etc.

The library resources, which are key resources for augmentation of the teaching learning process, are utilized by the faculty as and when required.

The quality of teaching and learning process is being monitored by the Principal through feedback taken at regular intervals from the students, the faculty, the grievance-redressal cell and during the student- parent / guardian meet.

The faculty members are encouraged to empower and equip themselves in using various tools and technology by attending the orientation and refresher courses organized by Academic Staff Colleges (UGC) and various universities to ensure improved teaching-learning.

The teachers' performance is evaluated by receiving feedback from the students and remedial measures are taken accordingly.

The student achievement is measured through formative approach by way of class room interactions and activities, and through summative approach by way of pre-final and final examinations, and they are impacting the system positively.

To increase the rigor of the internal assessment, the difficulty level is gradually raised in the consecutive unit tests etc. and the assessment is made transparent by making the valued test papers available to the students that they may know their performance themselves and get the doubts clarified. Any grievances regarding evaluation are redressed promptly.

The teaching-learning strategies are structured to facilitate the achievement of the intended learning outcomes by designing the academic plan, lesson plan, suitable teaching-learning methods, by implementing them with necessary additions or modifications as per need, and by evaluating the students' performance periodically.

The institution monitors and ensures the achievement of learning outcomes through the annual exams, monthly test, and evaluation process and by the final exams.

CRITERION III: RESEARCH, CONSULTANCY AND EXTENSION

The college, being an affiliated under graduate college, concentrates on teaching-learning process and has limited scope for research activities including interdisciplinary research and collaborative research.

The faculty members are encouraging the students to take up action research programmes through study projects and field studies in the concerned subject areas to inculcate the attitude of scientific observation, scientific temper and research spirit.

The laboratory facilities of departments of Zoology, Botany, Physics, Chemistry and Computers are suitable to the academic needs of the under graduate students.

The common Library in the institution caters to the academic needs of the students.

The institution mainly concentrates on the academic activities so there is no scope for the interface with the industries and no stated policy to promote consultancy.

The institution maintains cordial relations with neighboring colleges by sharing the ideas regarding the curriculum improvement, teaching learning experiences, mutual exchange of extension lectures and conducting of inter-collegiate tournaments.

The students get into contact and interaction with community when they are involved in social activities like blood donation, clean and green and they participate in all national and religious festivals with fervor and enthusiasm.

The institution has National Service Scheme which engages in various social activities like awareness programme on Superstitions, HIV AIDS, blood donation camp, Clean and Green, Literacy Programmes and drainage cleaning. They all help the students to have civic sense, social concern and the team spirit.

The institution solicit stakeholders' perception on the over all performance and quality of the institution by taking the opinion orally.

Alumni Association, Youth Organizations and Voluntary Organizations have been involved in the process of extension activities. They help the institution with moral and financial support.

CRITERION IV: INFRASTRUCTURE AND LEARNING RESOURCES

This is a government institution and the funds required for creation or enhancement of infrastructure are provided by the government itself. Whenever needs arise, proposals are sent to the government and the necessary funds are sought, and the infrastructure is obtained to the extent of the funds provided.

The College has well furnished infrastructure viz. Classrooms and Laboratories for different departments, Internet facility, Library, Audio visual aids like LCD and Computers. A big classroom is available for co-curricular and cultural activities.

The college provides sports facilities for physical fitness, out door games and indoor games.

As the new courses were introduced, the college has added the Chemistry Laboratory and New Class rooms cum Laboratories for Botany, Zoology and Physics departments in the last four years,

The needs of physically challenged students are met with due care.

The women's hostel is under construction by the UGC grants on the college premises.

Special units like Grievance Redressal unit, Women's Cell, Counseling and Career Guidance Cell, Placement Unit of JKC are functioning although there are no separate accommodations for them. Safe drinking water facility is there.

The College has a library advisory committee to look after the matters pertaining to the library such as purchase of books, reference material, subscribing to magazines etc. and extends the support to the students and the teachers as and when required.

The ICT resources like internet at JKC, computers of the Computer Lab and projector for PPTs are being utilized by most of the staff members for teaching/learning activities and for preparing study materials.

The student is made central in learning activities, by either making him personally gather information from the internet or by watching projected videos or video clips related to the topic to be learnt. The teacher acts as a facilitator by giving his

inputs/ explanations only where needed instead of explaining whole concept himself.

The financial assistance received by the college is allocated and utilized according to the procedure laid by the government and by involving the development, planning, building and purchase committees.

The infrastructure in-charge looks after the maintenance of the infrastructure and interacts regularly with the departmental heads and ensures fulfillment of further requirement as and when necessary.

CRITERION V: STUDENT SUPPORT AND PROGRESSION

College brings out prospectus giving information about academic calendar, list of staff members and other functionaries and syllabus. The prospectus is made available to the students in the beginning of each academic year.

The institution provides different financial assistance to the students like merit scholarships, scholarships to B.C., S.C., S.T., Minority and P.H.C. Students.

The institution promotes participation of students in extracurricular and co-curricular activities such as sports, games, quiz competitions, debate and discussions, cultural activities, celebration of various international days etc.

The students are informed about the various notifications of competitive examinations and are given the general overall guidance and preparation strategies from time to time.

The institution's faculty members with their rich experience provide counselling services for the students' problems such as behavioral problems, pedagogic problems, career related problems and other adjustment problems.

The institution has a Career Guidance and Counseling Cell which is giving the necessary information about employment sources and the counseling regarding how to prepare for the competitive exams.

The Grievance Redressal Cell is attending to the grievances of the students, if any, promptly.

There is a Women Empowerment Cell functioning in the institution and is ready to attend to any issues/problems of women.

The institution has Anti-Ragging Committee which creates the awareness about the evil of ragging and the disciplinary action such acts will invite.

The institution provides to the students different welfare schemes like Scholarships, Bus passes facility, Supply of low priced note books, Poor students' help fund.

The institution has an active Alumni Association which contributes to the development of the institution in different ways such as raising funds for the development of the institution, sharing their career experiences with the students, and giving helpful information about placements.

The institution helps the students in progression to higher level by providing the necessary information about higher education and employment opportunities open to them.

The institution tries to minimize the dropout rate in various ways like easing the financial burden through scholarships, helping with remedial classes and providing books from common library.

The institution encourages and ensures students' participation in various extracurricular activities.

To improve the performance and quality of the institutional provisions, the feed back is taken from the graduating students and based on the analysis of the data thus collected, necessary changes for improvement are undertaken.

The institution ensures the students' representation also in various academic and administrative committees.

CRITERION VI: GOVERNANCE, LEADERSHIP AND MANAGEMENT

The institution, located in a back ward region, is catering to the higher education needs of many deprived people and grooming them with qualities of employability.

The institution has C.P.D.C. (College Planning and Development Council), which looks after the welfare and development of the college by working with the principal and the faculty for the common good of the students.

The principal ensures the formulation of annual academic plan at the beginning of the year, sees that it is executed with coordination of the staff and reviews the progress periodically through the meetings and interaction with all the stakeholders.

The institution has effective coordination internally among the various departments and externally with the higher authorities which helps in effective implementation and improvement of policies and plans of the institution.

The institution provides opportunities to develop the leadership qualities in both the faculty and the students by taking them into various committees and by assigning tasks.

The administration of the institution is systematically decentralized by delegating power from the Principal to the heads of the institution, from them to the lecturers who allot certain duties to the student representatives.

The Principal involves the staff members in various committees to promote a culture of participative management for effective implementation of all policies and works.

The institution is committed to the maintenance of quality, and tries to fulfill the institution's mission and offers quality programmes generating budgetary resources from the budget allotted by the Government, the fees collected from the students and the assistance received from UGC.

The institution has a perspective academic plan which is placed before the general meeting held by the head of the institution in the beginning of the academic year. It includes all aspects related to curricular, co-curricular and extracurricular activities.

The institution has internal organizational structure comprising various decision making bodies to take care of various matters of the institution

The institution, while striving for all round development of the students, mainly concentrates on the academic matters.

The head of the institution makes all the necessary information available to the top management through prompt correspondence and all the basic information is placed on the college website for all to access and it is updated as and when needed.

The management involves all the staff in all phases of institutional processes like planning, implementing, reviewing and revising to ensure the effectiveness and efficiency.

Though there is no specific mechanism, the institution collects orally the students feed back on institutional performance by interacting with them and takes necessary action from time to time.

The institution encourages the teaching staff to undergo Orientation Courses, Refresher Courses conducted by prestigious universities for improving their professional skills.

All the service matters of the staff i.e. appointment, transfers, promotions, staff appraisal etc., are looked after by the Commissioner of Collegiate Education, A.P., Hyderabad

The institution has a committee to assess the quality in terms of the institution's objectives and teaching-learning outcomes as evident in students' performance, and to suggest possible ways of improving quality of instruction and student output.

The institution communicates its quality assurance policies, mechanisms and outcomes to all its stakeholders through annual academic reports and annual work plans.

CRITERIA VII: INNOVATIONS AND BEST PRACTICES

The institution has green audit by way of planting saplings on the eve of the World Earth Day and World Environment Day. It also takes up Clean and Green Programme every month.

The dissemination of knowledge through JKC helped the students in getting placements in the market.

The life skills offered by the institution through internal and external lectures will help the students to cope with the adjustment problems in their future course of life.

The competitive spirit among the students was given a boost by organizing extension lectures on employability skills, as proved by the good results.

The positive interactions with successful people in the competitive examinations and in the work field have thrown a positive light on the personality of the students.

One of the best practices of the institution is conducting of Yoga Classes. As the students are going either for higher studies or for employment/self employment, they need to develop their emotional quotient along with the professional competence where Yoga plays a helpful role.

The Yoga classes have resulted in behavioral change among the students. They have overcome the problems of maladjustment.

Another best practice of the institution is providing the Value-based Education to the students for inculcating values like discipline, sincerity, accountability etc., and helping them become good citizens. The positive impact of these classes is evident in the behaviour of the students.

PROFILE OF THE COLLEGE

Profile of the Affiliated /Constituent College

1. Name and address of the college:

Name:	GOVERNMENT DEGREE COLLEGE, KORATLA				
Address:	YESUKONI GUTTA, KORATLA, DIST: KARIMNAGAR				
City:	KORATLA	Pin:	505326	State:	ANDHRA PRADESH
Website:	www.gdckoratla.com				

2. For communication:

Designation	Name	Telephone with STD code	Mobile	Fax	Email
Principal	Dr. R. Ramaiah	O: 08725252160 R: -	9885281329	-	-
Vice Principal	-	O: - R: -	-	-	-
Steering Committee Co-ordinator	Dr. P. Dinakar	R: -	9959711849	-	-

3. Status of the of Institution :

Affiliated College
Constituent College
Any other (specify)

✓

4. Type of Institution:

a. By Gender

i. For Men

☐

ii. For Women

☐

iii. Co-education

☒

b. By shift

i. Regular

☐

ii. Day

☒

iii. Evening

☐

5. Is it a recognized minority institution?

Yes

No

✓

If yes specify the minority status (Religious/linguistic/ any other) and provide documentary evidence.

-

6. Source of funding:

Government

Grant-in-aid

Self-financing

Any other

✓

7. a. Date of establishment of the college: **08-12-1981**

b. University to which the college is affiliated /or which governs the college (If it is a constituent college)

SATAVAHANA UNIVERSITY, KARIMNAGAR, A.P.

c. Details of UGC recognition:

Under Section	Date, Month & Year	Remarks (If any)
i. 2 (f)	07-02-1992	-
ii. 12 (B)	07-02-1992	-

(Enclose the Certificate of recognition u/s 2 (f) and 12 (B) of the UGC Act)

d. Details of recognition/approval by statutory/regulatory bodies other than UGC (AICTE, NCTE, MCI, DCI, PCI, RCI etc.) - **NA** -

8. Does the affiliating University Act provide for conferment of autonomy (as recognized by the UGC), on its affiliated colleges?

Yes ☐

No ☒

If yes, has the College applied for availing the autonomous status?

Yes ☐

No ☐

9. Is the college recognized

a. by UGC as a College with Potential for Excellence (CPE)?

Yes ☐ No ☒

If yes, date of recognition: (dd/mm/yyyy)

b. for its performance by any other governmental agency?

Yes ☐ No ☒

If yes, Name of the agency

Date of recognition: (dd/mm/yyyy)

10. Location of the campus and area in sq.mts:

Location *	RURAL
Campus area in sq. mts.	101171.41 Sq. Mts
Built up area in sq. mts.	2640 Sq. Mts

11. Facilities available on the campus (Tick the available facility and provide numbers or other details at appropriate places) or in case the institution has an agreement with other agencies in using any of the listed facilities provide information on the facilities covered under the agreement.

- Auditorium/seminar complex with infrastructural facilities
- Sports facilities
 - * play ground - ✓
 - * swimming pool
 - * gymnasium
- Hostel
 - * Boys' hostel
 - i. Number of hostels
 - ii. Number of inmates
 - iii. Facilities (mention available facilities)
 - * Girls' hostel - **Under Construction**
 - i. Number of hostels
 - ii. Number of inmates
 - iii. Facilities (mention available facilities)
 - * Working women's hostel
 - i. Number of inmates
 - ii. Facilities (mention available facilities)
- Residential facilities for teaching and non-teaching staff (give numbers available -- cadre wise)
- Cafeteria --
- Health centre –

First aid, Inpatient, Outpatient, Emergency care facility, Ambulance.....

Health centre staff –

Qualified doctor Full time ☐ Part-time ☐

Qualified Nurse Full time ☐ Part-time ☐

- Facilities like banking, post office, book shops
- Transport facilities to cater to the needs of students and staff
- Animal house
- Biological waste disposal
- Generator or other facility for management/regulation of electricity and voltage
- Solid waste management facility
- Waste water management
- Water harvesting

12. Details of programmes offered by the college (Give data for current academic year) **2012-13**

Sl. No.	Programme Level	Name of the Programme/ Course	Duration	Entry Qualification	Medium of instruction	Sanctioned/approved Student strength	No. of students admitted in First Year
1	Under-Graduate	B.A (T/M)	3 years	Intermediate or equivalent recognized by BIE, AP.	Telugu	60	45
2	Under-Graduate	B.A (U/M)	3 years	Intermediate or equivalent recognized by BIE, AP.	Urdu	60	53
3	Under-Graduate	B.Com. (General)	3 years	Intermediate or equivalent recognized by BIE, AP.	Telugu	60	28
4	Under-Graduate	B.Com. (Comp. Appl)	3 years	Intermediate or equivalent recognized by BIE, AP.	English	60	37
5	Under-Graduate	B.Sc.. (BZC)	3 years	Intermediate with Botany, Physics, Chemistry as optionals or equivalent recognized by BIE, AP.	Telugu	60	09
6	Under-Graduate	B.Sc.. (MPC)	3 years	Intermediate with Mathematics, Physics, Chemistry as optionals or equivalent recognized by BIE, AP	Telugu	60	09
7	Under-Graduate	B.Sc.. (MPCs)	3 years	Intermediate with Mathematics, Physics, Chemistry as optionals or equivalent recognized by BIE, AP	English	60	04

13. Does the college offer self-financed Programmes?

Yes ☒ No ☐

If yes, how many?

02

14. New programmes introduced in the college during the last five years if any?

Yes	<input checked="" type="checkbox"/>	No	<input type="checkbox"/>	Number	03
-----	-------------------------------------	----	--------------------------	--------	----

15. List the departments: (respond if applicable only and do not list facilities like Library, Physical Education as departments, unless they are also offering academic degree awarding programmes. Similarly, do not list the departments offering common compulsory subjects for all the programmes like English, regional languages etc.)

Particulars	UG	PG	Research
Science	05	-	-
Arts	03	-	-
Commerce	01	-	-
Any Other not covered above (Computer Science & Applications)	01	-	-

16. Number of Programmes offered under (Programme means a degree course like BA, BSc, MA, M.Com...)

- a. annual system ☒
- b. semester system ☐
- c. trimester system ☐

17. Number of Programmes with

- a. Choice Based Credit System ☐
- b. Inter/Multidisciplinary Approach ☒
- c. Any other (specify and provide details) ☐

18. Does the college offer UG and/or PG programmes in Teacher Education?

Yes ☐ No ☒

If yes,

- a. Year of Introduction of the programme(s).....
(dd/mm/yyyy)
and number of batches that completed the programme
- b. NCTE recognition details (if applicable)
Notification No.:
Date: (dd/mm/yyyy)
Validity:.....
- c. Is the institution opting for assessment and accreditation of Teacher Education Programme separately?

Yes ☐ No ☐

19. Does the college offer UG or PG programme in Physical Education?

Yes ☐ No ☒

If yes,

a. Year of Introduction of the programme(s).....
(dd/mm/yyyy)

and number of batches that completed the programme

b. NCTE recognition details (if applicable)

Notification No.:

Date: (dd/mm/yyyy)

Validity:.....

c. Is the institution opting for assessment and accreditation of Physical Education Programme separately?

Yes ☐ No ☐

20. Number of teaching and non-teaching positions in the Institution

Positions	Teaching faculty						Non-teaching staff		Technical staff	
	Professor		Associate Professor		Assistant Professor					
	*M	*F	*M	*F	*M	*F	*M	*F	*M	*F
Sanctioned by the UGC / University / State Government	0	0	0	0	21	0	4	3	0	0
Recruited	0	0	0	0	12	0	3	3	0	0
Yet to recruit	0	0	0	0	9	0	1	0	0	
Sanctioned by the Management/society or other authorized bodies	0	0	0	0	0	0	0	0	0	0
Recruited	0	0	0	0	0	0	0	0	0	0
Yet to recruit	0	0	0	0	0	0	0	0	0	0

*M-Male *F-Female

21. Qualifications of the teaching staff:

Highest qualification	Professor		Associate Professor		Assistant Professor		Total
	Male	Female	Male	Female	Male	Female	
Permanent teachers							
D.Sc./D.Litt.	0	0	0	0	0	0	0
Ph.D.	0	0	0	0	3	0	3
M.Phil.	0	0	0	0	3	0	3
PG	0	0	0	0	5	0	5
Temporary teachers (Contract & Guest)							
Ph.D.	0	0	0	0	0	0	0
M.Phil.	0	0	0	0	2	0	2
PG	0	0	0	0	4	1	5
Part-time teachers							
Ph.D.	0	0	0	0	0	0	0
M.Phil.	0	0	0	0	0	0	0
PG	0	0	0	0	1	0	1

22. Number of Visiting Faculty /Guest Faculty engaged with the College.

02

23. Furnish the number of the students admitted to the college during the last four academic years.

Categories	Year 1 2012-13		Year 2 2011-12		Year 3 2010-11		Year 4 2009-10	
	Male	Female	Male	Female	Male	Female	Male	Female
SC	79	63	90	68	89	70	73	62
ST	05	05	08	07	11	10	15	06
OBC	218	127	280	163	352	183	313	185
Others	89	97	114	100	108	105	124	96
Total	391	292	492	338	560	368	525	349

24. Details on students enrollment in the college during the current academic year:

Type of students	UG	PG	M. Phil.	Ph.D.	Total
Students from the same state where the college is located	683	0	0	0	
Students from other states of India	0	0	0	0	0
NRI students	0	0	0	0	0
Foreign students	0	0	0	0	0
Total	683	0	0	0	

25. Dropout rate in UG and PG (average of the last two batches)

UG PG

26. Unit Cost of Education

(Unit cost = total annual recurring expenditure (actual) divided by total number of students enrolled)

(a) including the salary component

(b) excluding the salary component

27. Does the college offer any programme/s in distance education mode (DEP)?

If yes, Yes ☒ No ☐

a) is it a registered centre for offering distance education programmes of another University

Yes ☒ No ☐

b) Name of the University which has granted such registration.

c) Number of programmes offered

d) Programmes carry the recognition of the Distance Education Council.

Yes ☒ No ☐

28. Provide Teacher-student ratio for each of the programme/course offered

Name of the Programme/ Course	Teacher Student Ratio
B.A (Telugu Medium)	1 : 41.5
B.A (Urdu Medium)	1 : 49.0
B.Com. (General)	1 : 23.6
B.Com. (Comp. Appl)	1 : 23.8
B.Sc.. (MPC)	1 : 12.4
B.Sc.. (MPCs)	1 : 04 .2
B.Sc.. (BZC)	1 : 10.0
Total	1 : 40.17

29. Is the college applying for

Accreditation : Cycle 1 ☒ Cycle 2 ☐ Cycle 3 ☐ Cycle 4 ☐

Re-Assessment: ☐

(Cycle 1 refers to first accreditation and Cycle 2, Cycle 3 and Cycle 4 refers to re-accreditation)

30. Date of accreditation* (applicable for Cycle 2, Cycle 3, Cycle 4 and re-assessment only)

Cycle 1: (dd/mm/yyyy) Accreditation
Outcome/Result.....

Cycle 2: (dd/mm/yyyy) Accreditation
Outcome/Result.....

Cycle 3: (dd/mm/yyyy) Accreditation
Outcome/Result.....

* Kindly enclose copy of accreditation certificate(s) and peer team report(s) as an annexure.

31. Number of working days during the last academic year. **234**

32. Number of teaching days during the last academic year **189**

(Teaching days means days on which lectures were engaged excluding the examination days)

33. Date of establishment of Internal Quality Assurance Cell (IQAC)

IQAC (dd/mm/yyyy)

34. Details regarding submission of Annual Quality Assurance Reports (AQAR) to NAAC.

AQAR (i) (dd/mm/yyyy)

AQAR (ii) (dd/mm/yyyy)

AQAR (iii) (dd/mm/yyyy)

AQAR (iv) (dd/mm/yyyy)

35. Any other relevant data (not covered above) the college would like to include. (Do not include explanatory/descriptive information) : **Nil**

CRITERION WISE INPUTS

CRITERION-I

CURRICULAR ASPECTS

CRITERION I: CURRICULAR ASPECTS

1.1 Curriculum Planning and Implementation

1.1.1 State the vision, mission and objectives of the institution, and describe how these are communicated to the students, teachers, staff and other stakeholders.

VISION :

To provide the transformational quality higher education that inculcates moral values, scientific temper, quest for excellence among students and make them a human resource of competence to serve the society and nation as responsible citizens.

MISSION :

1. To ensure access of all sections of the society to higher education in the context of existing socio-economic deprivation.
2. To create a teaching learning environment that facilitates the pursuit of higher knowledge.
3. To provide a platform to the students to realize their potential and to hone their skills and talents.
4. To create awareness of employment opportunities and to develop self reliant, enterprising and employable human resource.
5. To inculcate values like self-respect, social equality national integration, secularism and brotherhood by organizing various activities.
6. To sensitize to the value of discipline, sincerity and service and to develop the students into responsible citizens committed to social good.

OBJECTIVES :

1. To be transparent and impartial in admissions, academics, administration and examinations.
2. To acquire the necessary infrastructure, amenities and equipment from time to time.
3. To involve the influential people and philanthropists in college developmental activities.
4. To include latest technology such as ICT in the existing set of knowledge – impartation methods.
5. To ensure continuous evaluation and follow-up.
6. To provide students with opportunities to realize their talents and skills and to get career guidance.

The vision, mission and objectives are communicated to the students, teachers, staff and other stakeholders. This is done through the students hand book, wall writing, college website, introductory class at the commencement of the academic year, especially for the newly admitted students.

1.1.2 How does the institution develop and deploy action plans for effective implementation of the curriculum? Give details of the process and substantiate through specific example(s).

The affiliating university designs the curriculum, which mostly reflects the institutional goals pertaining to higher education. The faculty members of the institution also design additional curricular inputs and plan extracurricular activities to cover the missing areas of the goals set forth.

1.1.3 What type of support (procedural and practical) do the teachers receive (from the University and/or institution) for effectively translating the curriculum and improving teaching practices?

Teachers receive academic support from Sathavahana University, Karimnagar, Academic Cell of CCE, AP, Hyderabad, various Academic Staff Colleges and from other neighboring colleges. The Academic Officers from Academic Cell of CCE, AP, Hyderabad, visit the college from time to time and offer their impressions on the academic activities.

1.1.4 Specify the initiatives taken up or contribution made by the institution for effective curriculum delivery and transaction on the Curriculum provided by the affiliating University or other statutory agency.

The curriculum designed by the university is divided into self-contained modules to facilitate easy understanding by the students.

1.1.5 How does the institution network and interact with beneficiaries such as industry, research bodies and the university in effective operationalisation of the curriculum?

The institution effectively maintains cordial relations and healthy links with the university as the curriculum is designed and revised by it.

1.1.6 What are the contributions of the institution and/or its staff members to the development of the curriculum by the University? (Number of staff members/departments represented on the Board of Studies, student feedback, teacher feedback, stakeholder feedback provided, specific suggestions etc.

Sri. Etta Bhoomesham, Head of the Department of Physics, Sri. S. Venkateshwar, Head of the Department of Mathematics, Sri. A. Ravi Prasad, Head of the Department of Zoology, Dr. T. Srinivas, Head of the Department of Botany and Dr. P. Dinakar, Lecturer in English are members of the respective Boards of Studies, Sathavahana University, Karimnagar. They attend the meetings and give possible academic inputs to the existing curriculum.

1.1.7 Does the institution develop curriculum for any of the courses offered (other than those under the purview of the affiliating university) by it? If 'yes', give details on the process ('Needs Assessment', design, development and planning) and the courses for which the curriculum has been developed.

No, the institution is not offering any courses other than those under the purview of the affiliating university.

1.1.8 How does institution analyze/ensure that the stated objectives of curriculum are achieved in the course of implementation?

In the course of implementation the institution analyses and ensures the achievement of stated objectives of the curriculum through periodic review meetings and follow-up action.

1.2 Academic Flexibility

1.2.1 Specifying the goals and objectives give details of the certificate/diploma/skill development courses etc., offered by the institution.

The institution offers Training programme in Communication and Soft Skills, Analytical Skills and Technical Skills for the period of 250 hours through Jawahar Knowledge Centre which includes Spoken English, Computer Skills and Analytical Skills. The programme is organized two times in an academic year by full time and guest mentors.

1.2.2 Does the institution offer programmes that facilitate twinning /dual degree? If 'yes', give details.

` No, the institution does not offer such programmes.

.2.3 Give details on the various institutional provisions with reference to academic flexibility and how it has been helpful to students in terms of skills development, academic mobility, progression to higher studies and improved

potential for employability

- **Range of Core /Elective options offered by the University and those opted by the college**
- **Choice Based Credit System and range of subject options**
- **Courses offered in modular form**
- **Credit transfer and accumulation facility**
- **Lateral and vertical mobility within and across programmes and courses**
- **Enrichment courses**

The institution offers the following programmes.

Faculty	Knowledge	Skills	Academic Progression	Employability
Faculty of Science				
B.Z.C.	70%	30%	100%	70%
M.P.C.	70%	30%	100%	70%
M.P.Cs.	60%	40%	100%	100%
Faculty of Commerce				
B.Com. (General)	70%	30%	100%	70%
B.Com. (Computer Appl.)	60%	40%	100%	100%
Faculty of Arts				
B.A. (T.M. & U.M.)	70%	30%	100%	70%

1.2.4 Does the institution offer self-financed programmes? If ‘yes’, list them and indicate how they differ from other programmes, with reference to admission, curriculum, fee structure, teacher qualification, salary etc.

Yes, the institution offers B.Com. (Computer Applications) and B.Sc.(M.P.Cs.) under self-financed programmes. The self-financed programmes are different from other programmes in fee structure, and especially in computer skill development, practical exposure and employability.

1.2.5 Does the college provide additional skill oriented programmes, relevant to regional and global employment markets? If ‘yes’ provide details of such programme and the beneficiaries.

Yes, JKC offers skill oriented programme, which is relevant to regional and global employment markets. It offers Spoken English, Computer Skills and Analytical Skills, which are essential for the employment at the national and international markets.

1.2.6 Does the University provide for the flexibility of combining the conventional face-to-face and Distance Mode of Education for students to choose the courses/combination of their choice” If ‘yes’, how does the institution take advantage of such provision for the benefit of students?

Yes, the institution provides B.A. (HPP/ EPP/ HEP/ SPP) course through SDLCE (School of Distance Learning and Continuing Education), Kakatiya University. The institution has a study centre which provides contact classes, face to face interaction with the faculty members and conducts examinations also. It is very much useful to the students who could not continue their regular studies.

1.3 Curriculum Enrichment

1.3.1 Describe the efforts made by the institution to supplement the University’s Curriculum to ensure that the academic programmes and Institution’s goals and objectives are integrated?

The members of the faculty add additional inputs to the existing curriculum whenever needed. The senior faculty members are on the boards of studies. They regularly suggests possible ways and means in improvising the curriculum according to the needs of the students.

1.3.2 What are the efforts made by the institution to modify, enrich and organize the curriculum to explicitly reflect the experiences of the students and cater to needs of the dynamic employment market?

In addition to the existing curriculum additional inputs are given by the lecturers as per the need and utility. Some of our lecturers who are members of various Boards of Studies are also contributing their inputs for modifications or enrichment of the curriculum.

1.3.3 Enumerate the efforts made by the institution to integrate the cross cutting issues such as Gender, Climate Change, Environmental Education, Human Rights, ICT etc., into the curriculum?

Academic programmes are, to a great extent, in line with the institution's vision, mission, goals and objectives. The institution has no freedom of formulating the curriculum. The courses run at UG levels have their relevance to the institution's goals and objectives. The syllabus and its presentation in the classroom is without any gender bias. At UG level the university has introduced a compulsory paper named 'Environmental Study'. This paper has been designed and developed by the eminent academicians. It addresses the issue of the climate change and the necessity of preserving the environment. The syllabus is framed in such a way that ecology, environment protection and preservation, value orientation, global and national demands are properly represented in the course of studies. Human rights protection and use of Information Technology in Teaching and Learning Process are included in the curriculum design. This is in tune with the institution's goals and objectives.

1.3.4 What are the various value-added courses/enrichment programmes offered to ensure holistic development of students?

- moral and ethical values
- employable and life skills
- better career options
- community orientation

The institution is not offering any course or programme in the above said areas but they have been incorporated in the existing curricular, co-curricular activities and best practices.

1.3.5 Citing a few examples enumerate on the extent of use of the feedback from stakeholders in enriching the curriculum?

The institution collects and analysis the feedback from the stakeholders for placing the findings before the university (which designs the curriculum) through our staff on Boards of Studies. The necessary additional inputs are also added to the curriculum in the class room whenever needed.

1.3.6 How does the institution monitor and evaluate the quality of its enrichment programmes?

The quality of the institution's enrichment programmes are evaluated through the Unit Tests, assignments and terminal examinations held by the institution and the Annual and Supplementary examinations held by the University.

1.4 Feedback System

1.4.1 What are the contributions of the institution in the design and development of the curriculum prepared by the University?

The members of the faculty interact with the curriculum designers frequently. They suggest possible academic inputs to the existing curriculum. Some of our college faculty members are members on Boards of Studies of respective Departments at Sathavahana University, Karimnagar and they actively participate in design and development of the curriculum.

1.4.2 Is there a formal mechanism to obtain feedback from students and stakeholders on Curriculum? If 'yes', how is it communicated to the University and made use internally for curriculum enrichment and introducing changes/new programmes?

Yes, there is a formal mechanism to obtain feedback from students and stakeholders. After analysis, the items of feedback that need to be represented at the university are duly communicated.

1.4.3 How many new programmes/courses were introduced by the institution during the last four years? What was the rationale for introducing new courses/programmes?)

B.Sc. (Computer Science) course was introduced by the institution in the last four years.

CRITERION-II
TEACHING-LEARNING
AND EVALUATION

CRITERION II: TEACHING –LEARNING AND EVALUATION

2.1 Student Enrolment and Profile

2.1.1 How does the college ensure publicity and transparency in the admission process?

The detailed information related to vision, mission, objectives, courses, fee structure, rules and regulation, teaching staff and non-teaching staff is given in the college prospectus and also in the website <http://www.gdckoratla.com>.

The advertisements for admission to different courses such as B.A., B.Com. and B.Sc. are published in daily newspapers like Eenadu, Andhra Jyothi, Sakshi, Namaste Telangana, Vaartha, Andhra Bhoomi, Andhra Prabha and Urdu News papers etc. from time to time and the same is displayed on the Notice board of the College too. The advertisement contains detailed information about courses, eligibility, process of admission and academic as well as support facilities.

In order to maintain the objective of social equilibrium the reservation policy is implemented in the admission of backward class students as shown below which is as per the stipulated guidelines, rules and regulations laid by the concerned authority.

SC	ST	BC	NCC	Games & Sports	Extra curricular Activities	Ex- Servicemen	PHC
15%	7.5%	25%	2%	2%	1%	3%	3%

- Transfer from one course to the other is allowed based on availability of seats.

- Transparency is maintained throughout the admission process. The Guidelines of UGC, the Commissioner of Collegiate Education, A.P, Hyderabad and Sathavahana University, Karimnagar are strictly followed.

Thus, transparency and adherence to rules from the start of admission process till the completion ensures the access, equity and the social justice

2.1.2 Explain in detail the criteria adopted and process of admission (Ex. (i) merit (ii) common admission test conducted by state agencies and national agencies (iii) combination of merit and entrance test or merit, entrance test and interview (iv) any other) to various programmes of the Institution.

The criteria adopted for admission to various programmes is only on merit and in accordance with the reservation rules framed by the state government.

The admission process is as follows:

- Students purchase admission form and submit the application with required certificates.
- There is an admission committee which scrutinizes the application forms of students and prepares a list of students selected on merit (marks and reservation basis).
- General merit list is displayed on a scheduled date showing category wise merit.
- Subsequently second and third merit list is displayed as per vacancy of seats.
- An undertaking from parents on behalf of their wards is taken stating that their wards would abide by the rules and regulations of the institution.

2.1.3 Give the minimum and maximum percentage of marks for admission at entry level for each of the programmes offered by the college and provide a comparison with other colleges of the affiliating university within the city/district.

We strictly follow the University norms and Government policies of reservation in admission process.

Sl. No.	Course Name	Medium	Minimum Marks / Percentage	Maximum Marks / Percentage	Intake Capacity
1	B.A. (HEP)	T/M	35	90	80
2	B.A. (HEP)	U/M	35	90	80
3	B.Com. (General)	T/M	35	90	60
4	B.Com. (Comp. Appl.)	E/M	35	90	60
5	B.Sc. (BZC)	T/M	35	90	60
6	B.Sc. (MPC)	T/M	35	90	60
7	B.Sc. (MPCSc)	E/M	35	90	60

2.1.4 Is there a mechanism in the institution to review the admission process and student profiles annually? If ‘yes’ what is the outcome of such an effort and how has it contributed to the improvement of the process?

The admission process is designed by the university concerned and the government. As this is government institution, the process is followed strictly without deviation. If anything in the admission process needs to be modified, the same is communicated to the university and authorities concerned. The student profiles are collected, reviewed and the socio, economic conditions are assessed for understanding them better.

2.1.5 Reflecting on the strategies adopted to increase/improve access for following categories of students, enumerate on how the admission policy of the institution and its student profiles demonstrate/reflect the National commitment to diversity and inclusion

Ours is a Government Institution and its gates are open for everyone who desires to seek admission without discrimination of cast, creed, religion and sex. In this aspect the University rules are followed. The university has provided detailed instruction on the reservation of seats for SC/ST/OBC and weightage to women, economically weaker sections and differently abled students.

- **SC / ST and OBC:** Admitted on the basis of merit, reserved quota as per rule with special attention about their career. Admission is given to disadvantaged community such as SC / ST and OBC as per the rules of the Central and State Governments. The Institution reserves 3% of the total seats for persons with disabilities as per the directions of the Government, UGC, New Delhi and Sathavahana University.
- **Women:** Preference in admission and the College reserves 33% seats for women as per the rules of State Government.
- **Differently abled:** The institution reserves 2% seats for the Differently abled students.
- **Economically Weaker Sections:** As per the norms of the state Government, seats are reserved for students belonging to economically weaker sections.
- **Minority Community:** as per provision.
- **Any Other:** Due weightage is given to the students who have outstanding sports records and the association with NCC, NSS, Cultural activities etc. Children of Defense personnel, freedom fighters, teachers, Central / State Govt. employees, renowned artists. State and National award winners are given priority.

2.16. Provide the following details for various programmes offered by the institution during the last four years and comment on the trends i.e. reasons for increase / decrease and actions initiated for improvement.

The details are shown in the table in next page.

Table showing the details of applications, admissions and demand ratio

Programmes	Number of applications				Number of students admitted				Demand Ratio			
UG	2009-10	2010-11	2011-12	2012-13	2009-10	2010-11	2011-12	2012-13	2009-10	2010-11	2011-12	2012-13
1. B.A (Telugu Medium)	89	107	105	69	83	104	66	45	1.07	1.02	1.59	1.53
2. B.A (Urdu Medium)	76	72	57	56	65	68	49	53	1.17	1.05	1.16	1.06
3.B.Com. (General)	62	70	90	43	52	68	63	28	1.19	1.02	1.42	1.53
4. B.Com. (Comp. Appl.)	96	65	114	87	55	60	47	37	1.74	1.08	2.42	2.35
5. B.Sc. (MPC)	37	56	50	23	32	54	12	09	1.15	1.03	4.16	2.55
6. B.Sc. (MPCs)	-	-	27	17	-	-	19	04	-	-	1.42	4.25
7. B.Sc. (BZC)	70	28	50	30	33	25	27	09	2.12	1.12	1.85	3.33
Total	430	398	493	325	320	379	283	185	1.34	1.05	1.74	1.75
PG Diploma	-	-	-	-	-	-	-	-	-	-	-	-
Any other	-	-	-	-	-	-	-	-	-	-	-	-

- Yes. An analysis is done on the demand ratio and the following steps have been taken. For courses in high demand (Mathematics, Physics, Computer Science, Commerce and Computer Applications), the increase in demand is usually parallel to the career opportunities. Therefore, the institution has introduced B.Com. (Computer Applications) and B.Sc (Computer Science) courses.
- **Trend:** There are certain fluctuations in the admissions: The strength increasing in some courses and decreasing in some other courses.
- **Reasons:** Availability of qualified teachers, infrastructural facilities and good governance are the reasons for increasing trend and lack of timely transport facilities and vacancies in the Faculty of Arts are the reasons for fluctuating trend.

2.2 Catering to Diverse Needs of Students

2.2.1 How does the institution cater to the needs of differently-abled students and ensure adherence to government policies in this regard?

The college has been consistently implementing different strategies for the overall development of students, who are considered to be the soul of the entire education system. It adopts the learner- centric process to cater to the diverse needs of the students. The college provides special reservation for differently abled students according to Government and university policies. As per the Government policies, the institution caters to the needs of differently abled students by providing them with helpers whenever necessary such as scribe to write the answers in the examinations incase of visually challenged students.

2.2.2 Does the institution assess the students' needs in terms of knowledge and skills before the commencement of the programme? If 'yes', give details on the process.

Yes. Before commencement of each programme the institution identifies and evaluates the students' needs. The competency and learning level of a student is judged from his / her marks and from the details given in his/her profile collected at the time of admission. The College organizes an induction class in the beginning to orient them to the Vision and Mission of the College, rules and regulations pertaining to academic and non-academic issues.

2.2.3 What are the strategies drawn and deployed by the institution to bridge the knowledge gap of the enrolled students to enable them to cope with the programme of their choice? (Bridge/Remedial/Add-on/Enrichment Courses, etc.

As a majority of students are from the villages, tutorial classes are offered to make a comfortable transition to English as medium of instruction. In the first month of the academic year, all the newly admitted students are offered a class to ask their doubts in all subjects. The class material is prepared by the respective departments. The time table is scheduled to accommodate three hours of English, one hour of Major subject and one hour of language (Telugu and Hindi). Hence, before the commencement of the classes, the class ensures a familiarity and orientation with the English language and the elected major subject. All departments conduct remedial classes on scheduled days. Classroom lectures, internal assessment system, Career counseling etc. for all the students are conducted.

2.2.4 How does the college sensitize its staff and students on issues such as gender, inclusion, environment etc.?

The institution sensitizes its staff and students on issues such as gender, inclusion, environment etc. through various means like:

- Celebrating the international days pertaining to the above issues (World Women Day, World Literacy Day, World Environment Day etc.)

- Organizing Debates, Group Discussions, Elocutions, Essay Writing etc. as part of the literary & cultural competitions.
- Displaying the news paper clippings related to the issues.
- Showing video clips.
- Arranging awareness programmes to maintain and sustain the environment such as discouraging the use of plastic bags, judicious use of natural resources, plantation in the premises etc.

2.2.5 How does the institution identify and respond to special educational / learning needs of advanced learners?

There is a specific strategy for the identification of slow and advanced learners at entry level; the indicator is just their Marks Memo. As the classes begin, their academic standards are judged through their responses and the regularly conducted class-tests. The advanced learners are identified on the basis of their responses, their pace of comprehension and assimilation, their articulation of ideas, conceptual abilities and progression in learning subjects. Students from both the categories are encouraged and provided need-based guidance and material. These students are encouraged to take initiatives in all curricular and extracurricular activities. Opportunities are provided for them to acquire knowledge in different areas for facilitating better future. Advanced learners are encouraged to go for JKC Classes in the college. The internal examination system, classroom teaching, practical classes, Group discussions, quiz test etc. are conducted.

2.2.6 How does the institution collect, analyze and use the data and information on the academic performance (through the programme duration) of the students at risk of drop out (students from the disadvantaged sections of society, physically challenged, slow learners, economically weaker sections etc.)?

The institution collects and analyzes the information on the academic performance from all the students by evaluating them after each academic year and sends letters to the parents and guardians about the attendance and mark percentage of their wards to prevent the drop outs. For slow learners, extra and remedial classes are held to enhance their skills and knowledge, to boost their confidence and to encourage them in preparing seminar papers to develop their competency. The special attention and arrangement of special classes is made to check the dropout rate and to enhance the quality of students.

2.3 Teaching-Learning Process

2.3.1 How does the college plan and organize the teaching, learning and evaluation schedules? (Academic calendar, teaching plan, evaluation, blue print, etc.)

The institution follows an academic calendar to maintain the standards in the system. The institution distributes academic calendar, teaching plan and evaluation blue print to the faculty members. It is the responsibility of the faculty to evaluate the students of their particular department. The academic year begins in June and ends in April. The learning and evaluation process is carried through the UG exams conducted in February, March / April. At the start of the session the Lecturers are allotted courses and are instructed to prepare a time schedule of the course. They are asked to divide the syllabus into number of classes for each topic, and stick to the plan. Further, the following steps are taken:-

- Regular meetings in the Department to monitor the annual plan.
- Following Academic Calendar prepared by the Commissioner of Collegiate Education, A.P., Hyderabad, and Almanac supplied by Sathavahana University, Karimnagar.
- Having a special schedule for classes including Tutorial classes, Remedial classes and JKC classes.
- Arrangement of Internal examination and evaluation system.

- A committee of experienced teachers prepares the academic calendar which is published through the prospectus and also put on the concerned Notice Boards. The teaching, learning and evaluation processes include regular University exams, departmental class tests, tutorials, seminars and discussions. The above schedules have flexibility to adjust to the needs. The evaluation blue prints are already supplied by the University. Our staff members evaluate our students not only as per the University motives but also as per our college aims and Objectives. The teachers regularly prepare lesson notes and plan the teaching-learning activities in advance.

2.3.2 How does IQAC contribute to improve the teaching –learning process?

An IQAC cell has been established by the institution as a quality tool to maintain and sustain the quality parameters of the institution in very field including extension activities. It also helps to improve the teaching learning process by introducing the latest Teaching Learning Aids ensuring quality teaching and progress in studies. IQAC monitors all these activities from time to time and forwards its suggestions to the Principal for needful action.

2.3.3 How learning is made more student-centric? Give details on the support structures and systems available for teachers to develop skills like interactive learning, collaborative learning and independent learning among the students?

The institution follows the student centric learning through the different ways specified below.

- Each faculty prepares and discusses lesson plans with students.
- Lesson notes are distributed / discussed after each unit is covered in the class.
- Faculty performance is closely monitored by the respective faculty and periodic student feedback is taken.

- Encourage faculty to develop new experimental / teaching method.
- Innovative practices in teaching / experiments are encouraged.
- Through Audio-Visual aids, Tutorials and Doubts clearing classes.
- Through Career counseling, Remedial coaching.
- Through Projector & Computer Based Teaching (CBT) learning method.
- Through Library, Laboratories and JKC facilities.

2.3.4 How does the institution nurture critical thinking, creativity and scientific temper among the students to transform them into life-long learners and innovators?

- The institution adopts innovative teaching learning method through the modern teaching aids.
- The books, journals, periodicals in library and its use play an important role in teaching learning process.
- By arranging different awareness programmes like Women Literacy, Anti-dowry, Environmental, Health, Save water, Spiritual, Yoga etc.
- By organizing Seminars, Symposia, Workshops, Group Discussions and Debates.
- By arranging Guest and Extension Lectures.
- Through Academic discourse, Sports and Games and Cultural activities.

2.3.5 What are the technologies and facilities available and used by the faculty for effective teaching? Example: Virtual laboratories, e-learning - resources from National Programme on Technology Enhanced Learning (NPTEL) and National Mission on Education through Information and Communication Technology (NME-ICT), open educational resources, mobile education, etc.

- Well equipped Laboratories, Library, E-learning resources, ICT enabled teaching - learning method
- Computer with Internet.
- Provision of LCD in order to get well versed in all kinds of information.

2.3.6 How are the students and faculty exposed to advanced level of knowledge and skills (blended learning, expert lectures, seminars, workshops etc.)?

- The faculty members are allowed to attend and submit their papers in the state level and national level seminars in different places.
- The students and faculty members are exposed to advanced level of knowledge and skills through Computer with Internet connectivity, Projector, ICT, Guest / Expert Lectures, Seminars, Symposia, Workshops, E-resources.

2.3.7 Detail (process and the number of students benefited) on the academic, personal and psycho-social support and guidance services (professional counseling/mentoring/academic advise) provided to students?

- Students with social, economic, psychological and adjustment problem are identified by the faculty and they are provided counseling as well as support and specialist consultation as and when necessary. These deficiencies are also detected in the doubt clearing and soft skills classes and students are given appropriate counseling.
- Employment of students in different services.
- Students participate in different awareness programmes arranged for the benefit of society at different places, eg. NSS programmes, Adult education, anti-dowry, blood donation, environmental protection etc.
- Participation of our students in sports and games activities at university state & national level events.
- Selection in different jobs
- Selection in prestigious institutions for higher studies.

2.3.8 Provide details of innovative teaching approaches/methods adopted by the faculty during the last four years? What are the efforts made by the institution to encourage the faculty to adopt new and innovative approaches and the impact of such innovative practices on student learning?

All the faculty members are taking initiative in introducing innovative teaching approaches using modern Information Communication Technology tools to encourage the students in the innovative teaching methods.

- Introduction of communicative English classes
- Projector & Computer Based Teaching method
- Career counseling
- Remedial coaching
- Impact: Learning is made easy and the competitive edge and Skill enhancement take place.

2.3.9 How are library resources used to augment the teaching-learning process?

The library resources are the key resources to augment the teaching learning process. The librarian in charge issues the books, journals, magazines, references etc. to the students and the faculty as and when required. A student or a faculty can have the desired subject materials by having it photocopied outside the college.

2.3.10 Does the institution face any challenges in completing the curriculum within the planned time frame and calendar? If 'yes', elaborate on the challenges encountered and the institutional approaches to overcome these.

As the institution plans the time frame for the curriculum as per the University guidelines, the students as well as faculty do not face any challenges or problem to complete the course within the stipulated time period.

2.3.11 How does the institution monitor and evaluate the quality of teaching learning?

The quality of teaching and learning process is being monitored by the Principal

- Through Feedback taken from both the students and the faculty at regular intervals.
- Through Grievance-redressal cell
- Through Student Parent / guardian meet

2.4 Teacher Quality

2.4.1 Provide the following details and elaborate on the strategies adopted by the college in planning and management (recruitment and retention) of its human resource (qualified and competent teachers) to meet the changing requirements of the curriculum.

The teachers are selected and appointed on regular, part-time, contract and guest basis by the Commissioner of Collegiate Education, A.P., Hyderabad according to the rules and regulations of the U.G.C. and Government of Andhra Pradesh. The College has the required number of qualified and competent teachers to implement the courses offered. The tabular data gives the details of the present teaching staff and their qualifications:

Highest qualification	Professor		Associate Professor		Assistant Professor		Total
	Male	Female	Male	Female	Male	Female	
Permanent teachers							
D.Sc./D.Litt.	0	0	0	0	0	0	0
Ph.D.	0	0	0	0	3	0	3
M.Phil.	0	0	0	0	3	0	3
P.G.	0	0	0	0	5	0	5
Contract & Guest teachers							
Ph.D.	0	0	0	0	0	0	0
M.Phil.	0	0	0	0	2	0	2
P.G.	0	0	0	0	4	1	5
Part-time teachers							
Ph.D.	0	0	0	0	0	0	0
M.Phil.	0	0	0	0	0	0	0
P.G .	0	0	0	0	1	0	1

2.4.2 How does the institution cope with the growing demand/ scarcity of qualified senior faculty to teach new programmes/ modern areas (emerging areas) of study being introduced (Biotechnology, IT, Bioinformatics etc.)? Provide details on the efforts made by the institution in this direction and the outcome during the last three years.

The institution hires the services of experts in concerned programme on Contract / Guest basis for B.Com. (Computer Applications) and B.Sc. (Computer Science) courses. Students have fared well in their respective university exams with a pass percentage of 80 %.

S.No.	Course Name	No. of Students enrolled in session			
		2012-2013	2011-2012	2010-2011	2009-2010
1	B.Com. Computer Applications	37	47	60	55
2	B.Sc. Computer Science	04	19	-	-

2.4.3 Providing details on staff development programmes during the last four years elaborate on the strategies adopted by the institution in enhancing the teacher quality.

a) Nomination to staff development programmes

Academic Staff Development Programmes	Number of faculty nominated
Refresher courses	6
HRD programmes	0
Orientation programmes	5
Staff training conducted by the university	4
Staff training conducted by other institutions	0
Summer / winter schools, workshops, etc.	5

b) Faculty Training programmes organized by the institution to empower and enable the use of various tools and technology for improved teaching-learning

- ❖ Teaching learning methods/approaches
- ❖ Handling of new curriculum
- ❖ Content/knowledge management
- ❖ Selection, development and use of enrichment materials
- ❖ Assessment
- ❖ Cross cutting issues
- ❖ Audio Visual Aids/multimedia
- ❖ Teaching learning material development, selection and use

The institution does not organize any faculty training programmes as it is a Government Under Graduate college. However, the faculty members are encouraged to empower and enable themselves for using various tools and technology for improved teaching-learning by attending the orientation and refresher courses organized by Academic Staff Colleges (UGC) and various universities.

c) No. of faculty

- * invited as resource persons in Workshops / Seminars / Conferences organized by external professional agencies : 2
- * participated in external Workshops / Seminars / Conferences recognized by national/ international professional bodies : 5
- * presented papers in Workshops / Seminars / Conferences conducted or recognized by professional agencies : 3

2.4.4 What policies/systems are in place to recharge teachers? (eg: providing research grants, study leave, support for research and academic publications teaching experience in other national institutions and specialized programmes industrial engagement etc.)

- Recharging the teacher / faculty, is a serious concern of the institution and it allows the faculty to attend the State level and National level Seminars.
- Study leave is granted and support for research and academic publications is given.

2.4.5 Give the number of faculty who received awards / recognition at the state, national and international level for excellence in teaching during the last four years. Enunciate how the institutional culture and environment contributed to such performance/achievement of the faculty.

The teachers received no such awards during the last four years.

2.4.6 Has the institution introduced evaluation of teachers by the students and external Peers? If yes, how is the evaluation used for improving the quality of the teaching-learning process?

Yes. The feedback forms are collected from students on the performance of teachers and they are evaluated. Such evaluation is really improving the quality of teaching learning process. A faculty / teacher understands the area where he / she is very strong/ weak and suitable remedial measures are being taken through experts and visiting lecturers from internal and external sources.

2.5 Evaluation Process and Reforms

2.5.1 How does the institution ensure that the stakeholders of the institution especially students and faculty are aware of the evaluation processes?

The institution follows the process of evaluation through unit tests, term examinations and university final examinations, and spontaneous oral tests in the

class room during the teaching-learning process. The faculty members are informed about this evaluation process (which is done by the faculty itself) at the very beginning of the academic year. The students know about this process from two sources i.e. the student hand book and the faculty.

2.5.2 What are the major evaluation reforms of the university that the institution has adopted and what are the reforms initiated by the institution on its own?

The term end examinations, Unit Tests and assignments and project works are adopted but no specific reforms are initiated on its own by the institution.

2.5.3 How does the institution ensure effective implementation of the evaluation reforms of the university and those initiated by the institution on its own?

The evaluation reforms of the university, if any, will be implemented scrupulously.

2.5.4 Provide details on the formative and summative evaluation approaches adapted to measure student achievement. Cite a few examples which have positively impacted the system.

The student achievement is measured through formative approach by way of class room interactions and activities, and through summative approach by way of pre-final and final examinations, and they are impacting the system positively.

2.5.5 Enumerate on how the institution monitors and communicates the progress and performance of students through the duration of the course/programme? Provide an analysis of the students' results/achievements (Programme/course wise for last four years) and explain the differences if any and patterns of achievement across the programmes/courses offered.

The institution monitors the performance -

- Through Classroom lecture and internal assessment method
- Communication to students and parents through correspondence & college website.
- Analysis of the students results (last four years)

Year	B.A.			B.Com.			B.Sc.			Total
	Appeared	Passed	%	Appeared	Passed	%	Appeared	Passed	%	%
2008-09	138	78	56.52	76	41	53.95	0	0	0.00	55.24
2009-10	152	100	65.79	62	37	59.68	0	0	0.00	62.74
2010-11	113	66	58.41	79	53	67.09	53	12	22.64	49.38
2011-12	96	69	71.88	64	43	67.19	50	26	52.00	63.69

The results achieved in the last four years reveals that the pass percentage is increasing in B.A. with some fluctuations and increasing in B.Com. and B.Sc. courses.

2.5.6 Detail on the significant improvements made in ensuring rigor and transparency in the internal assessment during the last four years and weightages assigned for the overall development of students (weightage for behavioral aspects, independent learning, communication skills etc.

To increase the rigor of the internal assessment, the difficulty level is gradually raised in the consecutive unit tests etc. and the assessment is made transparent by making the valued test papers available to the students for knowing their performance themselves, for getting the doubts clarified, if any.

2.5.7 Does the institution and individual teachers use assessment/evaluation as an indicator for evaluating student performance, achievement of learning objectives and planning? If 'yes' provide details on the process and cite a few examples.

Yes. The indicators used by institution and individual teachers to assess the student performance are:

- Marks in internal exams.
- Class room performance and Behavioral aspects.
- Communication skills
- Appreciation certificates & cash / kind reward for good performance, won by the students.
- In addition to the above, the introduction of the process of evaluation of teachers by the students is really improving the quality of teaching learning process. A faculty / teacher understands the area where he / she is very strong/ weak and needed remedial measures are being taken through experts and visiting lecturers from internal and external sources.

2.5.8 What are the mechanisms for redressal of grievances with reference to evaluation both at the college and University level?

The institution has a Grievance & Redressal cell to redress the grievances of the students in evaluation / examination process. Appropriate mechanism for redressal of grievances is adopted by Sri. S. Venkateshwar, Lecturer in Mathematics in charge of the examinations. The Principal of the institution is prompt in the redressal of the grievances in his purview. The University has its own mechanism for grievance redressal.

2.6 Student performance and Learning Outcomes

2.6.1 Does the college have clearly stated learning outcomes? If ‘yes’ give details on how the students and staff are made aware of these?

Yes. The college has clearly shown learning outcomes

- The student and the staff of the institution get informed of the learning outcomes by publication in the prospectus.
- Through evaluative studies conducted on both sections regularly & occasional meets.
- Through internal examination system and feedback evaluation cell

2.6.2 How are the teaching, learning and assessment strategies of the institution structured to facilitate the achievement of the intended learning outcomes?

The teaching-learning strategies are structured to facilitate the achievement of the intended learning outcomes by designing the academic plan, lesson plan, suitable teaching-learning methods, by implementing them with necessary additions or modifications as per need, and by evaluating the students' performance periodically.

2.6.3 What are the measures/initiatives taken up by the institution to enhance the social and economic relevance (quality Jobs, entrepreneurship, innovation and research aptitude) of the courses offered?

As a government institution, we can offer only the courses permitted by the government. Accordingly, only traditional courses i.e. B.A and B.Com were offered initially. However, sensing the need for social and economic relevance of courses and their job prospects, the following new courses were introduced.

- B.Com (Comp. Appl) in 2001-02
- B.Sc. (MPC & BZC) in 2008-09
- B.Sc. (MPCs) in 2011-12

2.6.4 How does the institution collect and analyze data on student learning outcomes and use it for planning and overcoming barriers of learning?

- The faculty of different department collects, evaluates and analyzes the data on students learning outcomes and make note of any drawbacks in the evaluation process and accordingly they plan to overcome these barriers in future.
- There is a feedback evaluation cell which evaluates the performance of students by collecting data from the students, faculty and through internal examinations. Appropriate suggestions are forwarded to principal for overcoming the barriers of learning.

2.6.5 How does the institution monitor and ensure the achievement of learning outcomes

- The institution monitors and ensures the achievement of learning outcomes through the annual exams, evaluation process and the final exams.
- The evaluative reports are discussed in the meeting of the heads of the departments and appropriate measures are taken.
- The suggestions of feedback evaluation cell and academic committee are implemented.

2.6.6 What are the graduates attributes specified by the college/affiliating university? How does the college ensure the attainment of these by the students?

- Quality education to the students and congenial atmosphere on the campus are achieved through supportive faculty and their equipping, transparent assessment, value orientation and yoga.
- Special emphasis is given to job oriented courses and to Teaching & Learning through latest aids. The institution takes advantage of LCD Projector, Internet etc.
- National spirit is inculcated in students through relevant programmes/activities.

Any other relevant information regarding Teaching-Learning and Evaluation which the college would like to include.

The college has two Restructured courses under self-financing scheme. The faculty of the college is fully aware of the fact that teaching means not just imparting curricular knowledge and arranging extra-curricular activities, but also the development of integrated personality without which the students cannot meet the challenges of life ahead.

CRITERION-III

**RESEARCH, CONSULTANCY AND
EXTENTION**

CRITERION III: RESEARCH, CONSULTANCY AND EXTENSION

3.1 Promotion of Research

3.1.1 Does the institution have recognized research center/s of the affiliating University or any other agency/organization?

No. The college being an affiliated under graduate college, a very limited scope is there for research activities.

3.1.2 Does the Institution have a research committee to monitor and address the issues of research? If so, what is its composition? Mention a few recommendations made by the committee for implementation and their impact.

No. The college mainly concentrates on teaching-learning process at under graduate level because of its limited resources.

3.1.3 What are the measures taken by the institution to facilitate smooth progress and implementation of research schemes/projects?

- autonomy to the principal investigator
- timely availability or release of resources
- adequate infrastructure and human resources
- time-off, reduced teaching load, special leave etc. to teachers
- support in terms of technology and information needs
- facilitate timely auditing and submission of utilization certificate to the funding authorities
- any other

The investigators can utilize the facilities provided by UGC in respect of research i.e. funds and leaves, as our college is recognized by UGC under sections 2f & 12B.

3.1.4 What are the efforts made by the institution in developing scientific temper and research culture and aptitude among students?

The faculty members are encouraging the students to take up action research programmes through study projects and field studies in their concerned subjects to inculcate an attitude of scientific observation and enquiry.

3.1.5 Give details of the faculty involvement in active research (Guiding student research, leading Research Projects, engaged in individual/collaborative research activity, etc.

At present, the faculty is not involved in active research but attending seminars and conferences.

3.1.6 Give details of workshops/ training programmes/ sensitization programmes conducted/organized by the institution with focus on capacity building in terms of research and imbibing research culture among the staff and students.

The institution did not conduct any workshops/ training programmes so far but we are encouraging the students to take up project works as part of their course work and guiding them to prepare the project reports in research spirit.

3.1.7 Provide details of prioritised research areas and the expertise available with the institution.

The institution doesn't have such facilities of research. So, no research areas are prioritized.

3.1.8 Enumerate the efforts of the institution in attracting researchers of eminence to visit the campus and interact with teachers and students?

The institution is an affiliated college to Sathavahana University which takes up academic activities only.

- 3.1.9 What percentage of the faculty has utilized Sabbatical Leave for research activities? How has the provision contributed to improve the quality of research and imbibe research culture on the campus?**

No faculty has utilized this service.

- 3.1.10 Provide details of the initiatives taken up by the institution in creating awareness/advocating/transfer of relative findings of research of the institution and elsewhere to students and community. (Lab to Land)**

The institution has not fully engaged in research activities. However, the faculty who did their research personally in their respective subjects have given presentations to students about their research work.

3.2 Resource Mobilization for Research

- 3.2.1 What percentage of the total budget is earmarked for research? Give details of major heads of expenditure, financial allocation and actual utilization.**

Specific budget is not earmarked for research in the institution but fortunately UGC is ready to release the funds to the research aspirants.

- 3.2.2 Is there a provision in the institution to provide seed money to the faculty for research? If so, specify the amount disbursed and the percentage of the faculty that has availed the facility in the last four years?**

No, there is no such provision in the institution as it is an affiliated college.

- 3.2.3 What are the financial provisions made available to support student research projects by students?**

The financial support from UGC is available to the student research projects.

3.2.4 How does the various departments/units/staff of the institution interact in undertaking inter-disciplinary research? Cite examples of successful endeavors and challenges faced in organizing interdisciplinary research.

The college being an affiliated under graduate college engaged mainly in academic activities rather than in research, no interdisciplinary research has been undertaken.

3.2.5 How does the institution ensure optimal use of various equipment and research facilities of the institution by its staff and students?

The laboratory facilities of departments of Zoology, Botany, Physics, Chemistry and Computers are suitable to the academic needs of the under graduate students only. They are not adequate for higher research purpose.

3.2.6 Has the institution received any special grants or finances from the industry or other beneficiary agency for developing research facility? If 'yes' give details.

No. The institution did not receive any special grants as it did not tie up with any industry or agency.

3.2.7 Enumerate the support provided to the faculty in securing research funds from various funding agencies, industry and other organisations. Provide details of ongoing and completed projects and grants received during the last four years.

No faculty is provided research funds from any funding agencies, industry and other organisations and there are no ongoing or completed projects and no grants are received during the last four years.

3.3 Research Facilities

3.3.1 What are the research facilities available to the students and research scholars within the campus?

Laboratories in the Departments of Zoology, Botany, Physics, Chemistry and Computers are available. But more than that, the faculty who can give good research guidance are available to the students.

3.3.2 What are the institutional strategies for planning, upgrading and creating infrastructural facilities to meet the needs of researchers especially in the new and emerging areas of research?

No such institutional strategies are there as this is an affiliated under graduate college.

3.3.3 Has the institution received any special grants or finances from the industry or other beneficiary agency for developing research facilities? If 'yes', what are the instruments/ facilities created during the last four years.

No. The institution did not receive any special grants from any industry or other beneficiary agency.

3.3.4 What are the research facilities made available to the students and research scholars outside the campus / other research laboratories?

No such facilities are available outside the campus.

3.3.5 Provide details on the library/ information resource centre or any other facilities available specifically for the researchers?

The common Library in the institution caters to the academic needs of the students.

3.3.6 What are the collaborative researches facilities developed / created by the research institutions in the college? For ex. Laboratories, library, instruments, computers, new technology etc.

As it is an affiliated college, no collaborative research is going on.

3.4 Research Publications and Awards

3.4.1 Highlight the major research achievements of the staff and students in terms of

- * Patents obtained and filed (process and product) : Nil**
- * Original research contributing to product improvement : Nil**
- * Research studies or surveys benefiting the community or improving the services**
- * Research inputs contributing to new initiatives and social development**

Dr. A. Venkata Ramana, Lecturer in Economics, presented 10 papers in various national seminars, published 09 articles which are benefiting the community and improving the services. Dr. P. Dinakar, Lecturer in English, wrote 3 books, presented 10 papers in various international and national seminars, and published 11 articles which contributed new insights and initiatives in the field of English Language and literature.

3.4.2 Does the Institution publish or partner in publication of research journal(s)? If 'yes', indicate the composition of the editorial board, publication policies and whether such publication is listed in any international database?

No research journal is being published by the institution.

3.4.3 Give details of publications by the faculty and students:

- * Publication per faculty 1 : 1.5**
- * Number of papers published by faculty and students in peer reviewed journals (national / international) : 20**
- * Number of publications listed in International Database (for Eg: Web of Science, Scopus, Humanities International Complete, Dare Database - International Social Sciences Directory, EBSCO host, etc.) : Nil**

- * Monographs : Nil
- * Chapter in Books : Nil
- * Books Edited : Nil
- * Books Written : 03 and 02 (Under Publishing)
- * Books with ISBN/ISSN numbers with details of publishers : Nil
- * Citation Index : Nil
- * SNIP : Nil
- * SJR : Nil
- * Impact factor : Nil
- * h-index : Nil

3.4.4 Provide details (if any) of

- * research awards received by the faculty :Nil
- * recognition received by the faculty from reputed professional bodies and agencies, nationally and internationally :Nil
- * Incentives given to faculty for receiving state, national and international recognitions for research contributions. : Nil

3.5 Consultancy

3.5.1 Give details of the systems and strategies for establishing institution-industry interface?

The institution mainly concentrates on the academic activities so there is no scope for the interface with the industries.

3.5.2 What is the stated policy of the institution to promote consultancy? How is the available expertise advocated and publicized?

Basically ours is not research institute so there is no stated policy to promote consultancy.

3.5.3 How does the institution encourage the staff to utilize their expertise and available facilities for consultancy services?

No consultancy facilities are available and no consultancy services are offered.

3.5.4 List the broad areas and major consultancy services provided by the institution and the revenue generated during the last four years.

The institution doesn't offer any such consultancy services.

3.5.5 What is the policy of the institution in sharing the income generated through consultancy (staff involved: Institution) and its use for institutional development?

The institution doesn't get any income through consultancy as such services are not offered by the institution.

3.6 Extension Activities and Institutional Social Responsibility (ISR)

3.6.1 How does the institution promote institution-neighborhood-community network and student engagement, contributing to good citizenship, service orientation and holistic development of students?

The institution maintains cordial relations with neighboring colleges by sharing its ideas regarding the curriculum improvement, teaching learning experiences, mutual exchange of extension lectures and conduct of inter-collegiate tournaments. The institution moulds its students as good citizens of India by creating awareness among them about their rights and duties as citizens. They get into contact and interact with the community while they are involved in social activities like blood donation, clean and green and they participate in all national and religious festivals with fervor and enthusiasm. Thus, the students are nurtured as good citizens having holistic development and positive attitude.

3.6.2 What is the Institutional mechanism to track students' involvement in various social movements / activities which promote citizenship roles?

The institution has National Service Scheme which engages in various social activities by conducting awareness programme on Superstitions, HIV AIDS, blood donation camp, Clean and Green, Literacy Programmes and drainage cleaning. They all help the students to have civic sense, social concern and the team spirit.

3.6.3 How does the institution solicit stakeholder perception on the overall performance and quality of the institution?

The institution solicits stakeholders' perception on the over all performance and quality of the institution by taking the opinion orally.

3.6.4 How does the institution plan and organize its extension and outreach programmes? Providing the budgetary details for last four years, list the major extension and outreach programmes and their impact on the overall development of students.

The institution has not conducted any extension and outreach programmes in the last four years for want of budgetary allocations.

3.6.5 How does the institution promote the participation of students and faculty in extension activities including participation in NSS, NCC, YRC and other National/ International agencies?

The students take an active part in NSS, Red Ribbon Club and Consumer Club. As part of the extension services KALA JATHAS (an awareness programme by artists) and other awareness programmes are conducted on Superstitions, Contagious Diseases, HIV AIDS, Blood Donation Camp, Clean and Green and Literacy Programmes.

3.6.6 Give details on social surveys, research or extension work (if any) undertaken by the college to ensure social justice and empower students from under-privileged and vulnerable sections of society?

Social surveys on the socio-economic conditions of SC, ST and Minority sections of the society, women empowerment, poverty, malnutrition, literacy and agricultural prices are being conducted by the students of B.A. Final year as part of their course work.

3.6.7 Reflecting on objectives and expected outcomes of the extension activities organized by the institution, comment on how they complement students' academic learning experience and specify the values and skills inculcated.

The extension activities undertaken by the students as part of their course work are helping them to have a close and first hand experience on the subject matter.

3.6.8 How does the institution ensure the involvement of the community in its reach out activities and contribute to the community development? Detail on the initiatives of the institution that encourage community participation in its activities?

Alumni Association, Youth Organizations and Voluntary Organizations have been involved in the process of extension activities. They help the institution with moral and financial support.

3.6.9 Give details on the constructive relationships forged (if any) with other institutions of the locality for working on various outreach and extension activities.

The institution has constructive relationships with Police, Health, Sanitary, Revenue and Forest departments. The police personnel have conducted an awareness programme on ragging and explained all the intricacies involved in the heinous crime. They also motivated the students to take part in the ongoing recruitment for constables and army personnel. The health department officials and the Indian Red Cross Society volunteers have conducted many programmes on the campus including blood donation camp, HIV AIDS. The forest department officials provided seedlings and tree guards to make the campus green.

3.6.10 Give details of awards received by the institution for extension activities and/contributions to the social/community development during the last four years.

The institution has not received any award but all the stakeholders and peoples' representatives have applauded the head of the institution faculty members and the students for their active participation.

3.7 Collaboration

3.7.1 How does the institution collaborate and interact with research laboratories, institutions and industry for research activities. Cite examples and benefits accrued of the initiatives - collaborative research, staff exchange, sharing facilities and equipment, research scholarships etc.

The institution concentrates on the academic activities only and we are not engaged in any collaborative research.

3.7.2 Provide details on the MoUs/collaborative arrangements (if any) with institutions of national importance/other universities/ industries/Corporate (Corporate entities) etc. and how they have contributed to the development of the institution.

The institution has no Memorandum of Understanding with any other institutions.

3.7.3 Give details (if any) on the industry-institution-community interactions that have contributed to the establishment / creation/up-gradation of academic facilities, student and staff support, infrastructure facilities of the institution viz. laboratories / library/ new technology /placement services etc.

The institution has got the support of the alumni association, community and the donors. Chairs, fans, refrigerator, water purifier and the arch board at the entrance were provided to the institution by them.

3.7.4 Highlighting the names of eminent scientists/participants who contributed to the events, provide details of national and international conferences organized by the college during the last four years.

The College has not conducted any conference during the last four years.

3.7.5 How many of the linkages/collaborations have actually resulted in formal MoUs and agreements? List out the activities and beneficiaries and cite examples (if any) of the established linkages that enhanced and/or facilitated

- a) Curriculum development/enrichment
- b) Internship/ On-the-job training
- c) Summer placement
- d) Faculty exchange and professional development
- e) Research
- f) Consultancy
- g) Extension
- h) Publication
- i) Student Placement
- j) Twinning programmes
- k) Introduction of new courses
- l) Student exchange
- m) Any other

The institution has not entered into any MoUs or agreements with any other organization.

3.7.6 Detail on the systemic efforts of the institution in planning, establishing and implementing the initiatives of the linkages/collaborations.

There are no institutional initiatives as there are no collaborations.

CRITERION-IV

INFRASTRUCTURE AND

LEARNING RESOURCES

CRITERION IV: INFRASTRUCTURE AND LEARNING RESOURCES

4.1 Physical Facilities

4.1.1 What is the policy of the Institution for creation and enhancement of infrastructure that facilitate effective teaching and learning?

This is a government institution and the funds required for creation or enhancement of infrastructure are provided by the government itself. Whenever needs arise, proposals are sent to the government and the necessary funds are sought, and the infrastructure is obtained to the extent of the funds provided.

4.1.2 Detail the facilities available for

- a) Curricular and co-curricular activities – classrooms, technology enabled learning spaces, seminar halls, tutorial spaces, laboratories, botanical garden, Animal house, specialized facilities and equipment for teaching, learning and research etc.**

The College has well furnished classrooms for different departments including Botany, Zoology, Chemistry, Physics, Computer laboratories and the Internet facility for the successful conduct of the academic activities. Library is accessible to all the students. Audio visual aids like LCD and Computers are available in the Computer Laboratory. Each department has developed infrastructural facilities; sophisticated equipments acquired through university plan grants, UGC and CCE. A.P. Hyderabad. The College has a big classroom which can accommodate 200 students approximately, and is available for co-curricular activities like debates, quizzes, seminars, etc.

b) Extra-curricular activities – sports, outdoor and indoor games, gymnasium, auditorium, NSS, NCC, cultural activities, Public speaking, communication skills development, yoga, health and hygiene etc.

The college provides sports facilities like physical fitness centre (Gym), volley ball court, a ground for cricket, kho-kho, kabaddi and facilities for indoor games like chess, carroms and for the presentation of the cultural activities.

4.1.3 How does the institution plan and ensure that the available infrastructure is in line with its academic growth and is optimally utilized? Give specific examples of the facilities developed/augmented and the amount spent during the last four years (Enclose the Master Plan of the Institution/ campus and indicate the existing physical infrastructure and the future planned expansions if any).

This College was started in the year 1981 with B.A. and B.Com. degree courses. The course of B.Com. (Computer Applications) was added in the year 2001. The science courses B.Sc. (BZC) and B.Sc. (MPC) were started in the year 2008. The Computer Science course in B.Sc. (MPCSc.) was started in the year 2011. Over the years, the College has witnessed a tremendous growth in terms of addition of new courses and enrollment of students. Keeping in pace with the growth rate, the College has added buildings, developed class rooms, provided lab facilities and it has augmented the infrastructure as per the stipulations of the Commissioner of Collegiate Education, A.P., Hyderabad and affiliating University. To meet the needs and requirement of the academic growth, additional infrastructure has been added. In the last four years, the following buildings / facilities have been constructed.

- Chemistry Lab Building (Rs. 25 lakhs).
- New Class rooms with Laboratories for Botany, Zoology and Physics departments (Rs. 30.00 lakhs).
- Play Ground

- Utilizing state government funds and UGC assistance, new physical infrastructure was built and the existing infrastructure was furnished with adequate furniture and equipments to facilitate effective teaching.
- Presently there is no hostel. But a Women's Hostel is under construction (Rs. 60.00 lakhs granted by UGC).

4.1.4 How does the institution ensure that the infrastructure facilities meet the requirements of students with physical disabilities?

The college is ready to provide separate facilities for the physically challenged students. Presently, there are blind students. If any students with visual, speech and hearing impairment are admitted, the college will provide the infrastructure facilities that needed for them. The infrastructural requirements to differently-abled students are met with utmost care and concern by providing the buddy to each student identified under the category. Differently abled students are accommodated in separate room during examinations and scribe facility is provided to each visually and differently challenged student.

4.1.5 Give details on the residential facility and various provisions available within them:

The women's hostel on the college premises is under construction for women students with 60 lakhs grants provided by the UGC and we are planning the below given residential facilities for the hostel students after completion of women's hostel.

- Recreational facilities, gymnasium, yoga center, etc.
- Computer facility including access to internet
- Facilities for medical emergencies
- Library facility
- Recreational facility-common room with audio-visual equipments

4.1.6 What are the provisions made available to students and staff in terms of health care on the campus and off the campus?

In respect of provisions of Health care centre, First-Aid facilities are available. The doctors on emergency call are made available on campus and off campus as and when necessary.

4.1.7 Give details of the Common Facilities available on the campus –spaces for special units like IQAC, Grievance Redressal unit, Women’s Cell, Counseling and Career Guidance, Placement Unit, Health Centre, Canteen, recreational spaces for staff and students, safe drinking water facility, auditorium, etc.

Special units like Grievance Redressal Unit, Women’s Cell, Counseling and Career Guidance Cell, Placement Unit of JKC are in function now although there are no separate accommodations for them. Safe drinking water facility is there.

4.2 Library as a Learning Resource

4.2.1 Does the library have an Advisory Committee? Specify the composition of such a committee. What significant initiatives have been implemented by the committee to render the library, student/user friendly?

Yes, the College has a library advisory committee headed by the Principal, and incharge Librarian as convener and senior faculty from departments as members. The major responsibilities of the committee are as follows. The committee passes resolutions regarding purchase of books, journals, periodicals, magazines, newspapers and the infrastructure utilizing the budget allocated on various sub-heads. The committee also recommends the subscription to new important journals and the rare latest reference books for adding to existing knowledge treasure. The committee also supervises the auction of unserviceable and spoiled books/ reading material with prior permission from the higher authorities. The

library is located in the new block with reading room and is easily accessible to the students and all the departments. Books are issued to the students / staff on production of identity proof. There is a short term provision of lending books and books are also issued to students and staff for use in the reading room.

4.2.2 Provide details of the following:

- * Total area of the library (in Sq. Mts.) : **58.032 Sq. Mts.**
- * Total seating capacity : **30 students**
- * Working hours (on working days, on holidays, before examination days, during examination days, during vacation) :
The college is maintaining Text Books, Reference Books, Journals and News Papers. The working hours of library as follows:

Working hours of the Library	
On working days	9:30 am to 5.30pm
On holidays	As per need
Before examination days	9:30 am to 5.30pm
During examination days	8:30 am to 5.30pm
During vacation	As per need

- * Layout of the library (individual reading carrels, lounge area for browsing and relaxed reading, IT zone for accessing e-resources)
Individual reading carrels : Nil.
Lounge area for browsing and relaxed reading : Nil
IT zone for accessing e-resources : Nil

4.2.3 How does the library ensure purchase and use of current titles, print and e-journals and other reading materials? Specify the amount spent on procuring new books, journals and e-resources during the last four years.

Library Holdings	Year -1 2008-09		Year – 2 2009-10		Year – 3 2010-11		Year – 4 2011-12	
	Number	Total Cost (Rs.)	Number	Total Cost (Rs.)	Number	Total Cost (Rs.)	Number	Total Cost (Rs.)
Text books	69	8982	154	17469	118	17064	166	18726
Reference Books	-	-	06	902	-	-	11	888
Journals/ Periodicals	-	-	-	-	-	-	-	-
e-resources	-	-	-	-	-	-	-	-
News papers & Magazines	12	5697	4	1575	4	1815	13	5165
Any other (specify)	-	-	-	-	-	-	-	-

Procuring of new books and other reading material during last four years has been done through library advisory committee as per the requisition of various departments.

4.2.4 Provide details on the ICT and other tools deployed to provide maximum access to the library collection?

- * OPAC
- * Electronic Resource Management package for e-journals
- * Federated searching tools to search articles in multiple databases
- * Library details in college Website
- * In-house/remote access to e-publications
- * Total number of computers for public access
- * Total numbers of printers for public access
- * Internet band width/ speed ☐ 2mbps ☐ 10 mbps ☐ 1 gb (GB)
- * Institutional Repository
- * Content management system for e-learning
- * Participation in Resource sharing networks/consortia (like Infflibinet)

ICT and other tools are not available in the library. The information regarding the library is available in the college website.

4.2.5 Provide details on the following items:

- Average number of walk-ins : 20 per day
- Average number of books issued/returned : 10 per day
- Ratio of library books to students enrolled : 1 : 8.78
- Average number of books added during last three years : 524
- Average number of login to OPAC : Nil
- Average number of login to e-resources : Nil
- Average number of e-resources downloaded/printed : Nil
- Number of information literacy trainings organized : Nil
- Details of “weeding out” of books and other materials : Nil

4.2.6 Give details of the specialized services provided by the library

- Manuscripts : Nil
- Reference : 1000
- Reprography : Nil
- ILL (Inter Library Loan Service) : Nil
- Information deployment and notification (Information Deployment and Notification) : Nil
- Download : Nil
- Printing : Nil
- Reading list/ Bibliography compilation : Nil
- In-house/remote access to e-resources : Nil
- User Orientation and awareness : Nil
- Assistance in searching Databases : Nil
- INFLIBNET/IUC facilities : Nil

4.2.7 Enumerate on the support provided by the Library staff to the students and teachers of the college.

In order to increase the use of library resources to an optimum level the library in charge is providing right information to the right user at the right time. He guides them on how to search and get proper information from the library collection. He also provides ready reference services and creates awareness. The college library advisory committee always extends the support to the students and the teachers whenever required.

4.2.8 What are the special facilities offered by the library to the visually/physically challenged persons? Give details.

No special facilities are offered as few visually/physically challenged persons are studying at present. If need arises suitable facilities will be created.

4.2.9 Does the library get the feedback from its users? If yes, how is it analysed and used for improving the library services. (What strategies are deployed by the Library to collect feedback from users? How is the feedback analysed and used for further improvement of the library services?)

Yes, oral feedback from the students about the difficulties faced and suggestions to improve the functioning of the library are taken and acted upon. The library in charge and the faculty regularly interact with the students in this regard.

4.3 IT Infrastructure

4.3.1. Give details on the computing facility available (hardware and software) at the institution.

- Number of computers with Configuration (provide actual number with exact configuration of each available system)

Sl. No.	Configuration	No. of Computers
1	Intel Celeron @ 950 Mhz	5
2	Intel Pentium-III @ 1 GHz	1
3	Intel Celeron @ 766MHz	5
4	Intel PIV @ 2800 MHz	3
5	Intel Pentium IV 531J @ 3000MHz	2
6	Intel Pentium IV 541J @ 3200MHz	1
	Total Number of Computers :	17

- Computer-student ratio : 1 : 5
- Stand alone facility : Yes
- LAN facility : No
- Licensed software : Yes. Windows, MS-Office, C, Java, Oracle, Anti-Virus, Tally etc.
- Number of nodes/ computers with Internet facility :
Internet facility is not available to the students right now but there is a plan to establish a computer lab with INFLIBINET access.

4.3.2 Detail on the computer and internet facility made available to the faculty and students on the campus and off-campus?

Yes, Computer and Internet facility are made available to the faculty only from 10 am to 5 pm.

4.3.3 What are the institutional plans and strategies for deploying and upgrading the IT infrastructure and associated facilities?

The library has no IT infrastructure of its own, but the internet facility of JKC and the computers of the Computer Lab can be utilized by the students if needed.

4.3.4 Provide details on the provision made in the annual budget for procurement, up gradation, deployment and maintenance of the computers and their accessories in the institution (Year wise for last four years)

No provision has been made in the annual budget for procurement, up gradation, deployment and maintenance of computer and other accessories in the institution during the last four years.

4.3.5 How does the institution facilitate extensive use of ICT resources including development and use of computer-aided teaching/ learning materials by its staff and students?

The ICT resources like internet at JKC, computers of the Computer Lab and projector for PPTs are being utilized by most of the staff members for teaching/learning activities as well as for preparing study materials.

4.3.6 Elaborate giving suitable examples on how the learning activities and technologies deployed (access to on-line teaching - learning resources, independent learning, ICT enabled classrooms/learning spaces etc.) by the institution place the student at the centre of teaching-learning process and render the role of a facilitator for the teacher.

The student is made central in learning activities, either by being made to personally gather the information from the internet or by watching projected videos or video clips related to the topic to be learnt. The teacher acts as a facilitator by giving his inputs/ explanations only when and where needed instead of explaining whole concept himself.

4.3.7 Does the Institution avail of the National Knowledge Network connectivity directly or through the affiliating university? If so, what are the services availed of?

No such facility is available.

4.4 Maintenance of Campus Facilities

4.4.1 How does the institution ensure optimal allocation and utilization of the available financial resources for maintenance and upkeep of the following facilities (substantiate your statements by providing details of budget allocated during last four years)?

The financial assistance received by the college is allocated and utilized according to the procedure laid by the government and with the involvement of development, planning, building and purchase committees. The following table shows the details of various facilities and budget allocation for last four years.

Sl. No.	Facility	2011-12 (Rs.)	2010-11 (Rs.)	2009-10 (Rs.)	2008-09 (Rs.)
a.	Building	-	30,00,000	27,75,000	-
b.	Furniture	-	1,41,000	-	-
c.	Equipment	12368	178736	94836	57363
d.	Computers & accessories	-	90,386	83,237	26,429
e.	Vehicles	-	-	-	-
f.	Any other	-	-	-	-

4.4.2 What are the institutional mechanisms for maintenance and upkeep of the infrastructure, facilities and equipment of the college?

The infrastructure incharge looks after the maintenance of the infrastructure and interacts regularly with the departmental heads and ensures fulfillment of further requirement as and when necessary.

4.4.3 How and with what frequency does the institution take up calibration and other precision measures for the equipment/instruments?

As and when needed, requisition is obtained from the Head of the Departments and faculty, which is duly placed before development committee and purchase committee and their approval is sought.

4.4.4 What are the major steps taken for location, upkeep and maintenance of sensitive equipment (voltage fluctuations, constant supply of water etc.)?

For attending the problem of power/voltage fluctuations, the college has an electrician. A bore-well with submersible water pump and water storage tanks are available and ensure constant water supply.

CRITERION-V
STUDENT SUPPORT AND
PROGRESSION

CRITERION V: STUDENT SUPPORT AND PROGRESSION

5.1 Student Mentoring and Support

5.1.1 Does the institution publish its updated prospectus/handbook annually? If ‘yes’, what is the information provided to students through these documents and how does the institution ensure its commitment and accountability?

Yes. College brings out prospectus to high light the activities going on in various departments. Academic calendar, different committees, list of staff members and other functionaries get place in it. However, syllabus is published by the university and any change/modification is communicated to the college. The head of the institution passes on to the respective departments and they further pass on to the concerned students. The prospectus is made available to the students in the beginning of each academic year. Prospectus/Information Broacher is published every year with modifications as per need.

5.1.2 Specify the type, number and amount of institutional scholarships / freeships given to the students during the last four years and whether the financial aid was available and disbursed on time?

The institution provides different financial assistance to the students like merit scholarships, scholarships to B.C., S.C., S.T., Minority and P.H.C. Students. The following table shows the particulars of the students who get the financial assistance during the last four years.

Type of Scholarship	2008-09	2009-10	2010-11	2011-12
Merit Scholarship	01	02	08	04
B.C	132	365	340	300
S.C	76	98	110	103
S.T	06	17	15	11
Minority	68	12	10	63
Total	283	494	483	481

5.1.3 What percentage of students receives financial assistance from state government, central government and other national agencies?

The following table shows the particulars of the students who received financial assistance from the different funding agencies.

Sl. No.	Name of the funding agency	% of the students who received financial assistance			
		2008-09	2009-10	2010-11	2011-12
1	State Government	33.45	56.20	51.10	57.46
2	Central Government	0.11	0.22	0.86	0.48
3	Other Agencies	-	-	-	-

5.1.4 What are the specific support services/facilities available for

- ✓ Students from SC/ST, OBC and economically weaker sections
 - Providing remedial classes
 - Providing Scholarships
 - Encouraging the students in curricular, co-curricular and extra curricular activities.
 - Instilling confidence among the lower strata of the society.
- ✓ Students with physical disabilities.
 - Boosting the morale of the physically challenged students
 - Providing Scholarships
 - Making special amenities like supporting structure by the side of stair case.
 - Making specified attentive in classrooms, wash rooms and rest room.
- ✓ Overseas students –
 - not applicable
- ✓ Students to participate in various competitions/National and International
 - Ashok, student of this college, participated in national TT

- ✓ Medical assistance to students: health centre, health insurance etc.
 - Regular medical checkup arranged. First Aid box is arranged in the staff room to provide immediate medical aid.
- ✓ Organizing coaching classes for competitive exams
 - Not applicable
- ✓ Skill development (spoken English, computer literacy, etc.,)
 - Spoken English and computer literacy programmes are arranged through JKC.
- ✓ Support for “slow learners”
 - Remedial classes are arranged for slow learners during zero hours. The classes are arranged subject wise.
- ✓ Exposures of students to other institution of higher learning/ corporate/business house etc.
 - So far the students have not been taken to any other institution of higher learning/ corporate/ business house etc. But, we are planning to take them to Kakatiya University, Warangal, National Institution of Technology, Warangal, Institution of Tribal and Folklore, Sri Potti Sriramulu Telugu University, Warangal in near future.
- ✓ Publication of student magazines
 - Instead of publishing student magazine which is costly affair, we have been organizing a wall magazine.

5.1.5 Describe the efforts made by the institution to facilitate entrepreneurial skills, among the students and the impact of the efforts.

As this is not a professional institution but an academic institution, not such efforts are made.

5.1.6 Enumerate the policies and strategies of the institution which promote participation of students in extracurricular and co-curricular activities such as sports, games, Quiz competitions, debate and discussions, cultural activities etc. additional academic support, flexibility in examinations special dietary requirements, sports uniform and materials any other.

The institution organizes competitions in sports and games very frequently. Essay writing, Elocution and Quiz competitions are conducted on all important occasions like World Environment Day, World Literacy Day, NSS Day, International Earth Day, International Womens' Day and others. Additional academic support is provided for the students who participate in the co-curricular and extracurricular activities during the working days. They will be provided academic support by organizing special classes for them and by conducting internal examinations during the zero hours.

5.1.7 Enumerating on the support and guidance provided to the students in preparing for the competitive exams, give details on the number of students appeared and qualified in various competitive exams such as UGC-CSIR-NET, UGC-NET, SLET, ATE / CAT / GRE / TOFEL / GMAT / Central /State services, Defense, Civil Services, etc.

The students are informed about the various notifications of competitive examinations and are given the general overall guidance and preparation strategies from time to time.

5.1.8 What type of counseling services are made available to the students (academic, personal, career, psycho-social etc.)

The institution has the faculty who have experience in different walks of life. They provide ample counseling to the students whenever and wherever needed. The important issues are informed to the parents if necessary. Students are provided with the counseling services for their

- Behavioral problems
- Pedagogic Problems
- Career related problems
- Other adjustment problems.

5.1.9 Does the institution have a structured mechanism for career guidance and placement of its students? If ‘yes’, detail on the services provided to help students identify job opportunities and prepare themselves for interview and the percentage of students selected during campus interviews by different employers (list the employers and the programmes).

Yes. Sri. Etta Bhoomesham, Senior Lecturer of the college is in charge of Career Guidance and Counseling Cell. Under the able guidance of the cell, the students get information about employment sources and job opportunities as advertised in the news papers and information received through other sources. Proper counselling about further courses and necessary guidance on how to build fruitful career are given to students by the Career Guidance and Counseling Cell.

5.1.10 Does the institution have a student grievance redressal cell? If yes, list (if any) the grievances reported and redressed during the last four years.

Yes, we have a Student Grievance Redressal Cell maintained by the senior member of the teaching faculty Mr. Etta Bhoomesham, Lecturer in Physics. During the last four years a few minor issues came before the cell and they were promptly attended by the members. Apart from them, no significant grievances were brought before the cell.

5.1.11 What are the institutional provisions for resolving issues pertaining to sexual harassment?

There is a Women Empowerment Cell for this purpose, Smt. B. Narmada, JKC Full Time Mentor is the in charge of the cell. No incidence has been reported so far owing to the healthy environment on the campus. The cell will examine the matter with the help of the head of the institution and teachers, and will solve the problem, in the event of any issue. Continuous vigilance of the college authorities and strict punishment provisions prevent sexual harassment of women.

5.1.12 Is there an anti-ragging committee? How many instances (if any) have been reported during the last four years and what action has been taken on these?

Yes, the institution has Anti-Ragging Committee which is maintained by the senior member of the teaching faculty Mr. E. Bhumesham, Lecturer in Physics. No instance was reported during the last four years because of the awareness created about the bad effects and impacts of ragging and about the disciplinary action that will be taken against those who resort to such heinous acts against their junior students.

5.1.13 Enumerate the welfare schemes made available to students by the institution.

The institution provides the following Welfare Schemes for the students.

- * Scholarships
- * Bus passes facility
- * Supply of low priced note books.
- * Fund to help poor students.

5.1.14 Does the institution have a registered Alumni Association? If ‘yes’, what are its activities and major contributions for institutional, academic and infrastructure development?

Yes, there is an active Alumni Association at the institution. Alumni meetings are organized and more activities are being planned. Alumni contribute to the development of the institution in the following ways:

- Providing funds for the development of the institution
- Bringing their career experiences to the classroom, as guest lecturers
- Helping with information about placements
- Providing help in gathering resources and amenities

5.2 Student Progression

5.2.1. Providing the percentage of students progressing to higher education or employment (for the last four batches) highlight the trends observed.

The student progression is approximately shown in the following table.

Student progression (Approximately)	Against % enrolled
UG to PG	09 %
PG to M.Phil.	1.5 %
PG to Ph.D.	0.5 %
Ph.D. to Post-Doctoral	-
Employed	
• Campus selection	-
• Other than campus recruitment	5 %
Entrepreneurship/Self-employment	22 %

5.2.2 Provide details of the programme wise pass percentage and completion rate for the last four years (cohort wise/batch wise as stipulated by the university)? Furnish programme-wise details in comparison with that of the previous performance of the same institution and that of the Colleges of the affiliating university within the city/district.

The details of the programme wise pass percentage and completion rate for the last four years are shown in next page.

Table showing the course wise pass percentage and completion rate.

Year	B.A. (T/M & U/M)				B.Com. (Gen. & C.A.)				B.Sc. (MPC & BZC)				Total %	Completion rate
	Appeared	Passed	%	Completion rate	Appeared	Passed	%	Completion rate	Appeared	Passed	%	Completion rate		
2008-09	138	78	56.52	1 : 0.57	76	41	53.95	1:0.54	0	0	0.00	0.00	55.24	1:0.55
2009-10	152	100	65.79	1: 0.66	62	37	59.68	1:0.60	0	0	0.00	0.00	62.74	1:0.63
2010-11	113	66	58.41	1: 0.58	79	53	67.09	1:0.67	53	12	22.64	1:0.23	49.38	1:0.49
2011-12	96	69	71.88	1: 0.72	64	43	67.19	1:0.67	50	26	52.00	1:0.52	63.69	1:0.64

The pass percentage in B.A is in progressive way as it is 56.52 in 2008-09 and reached to 71.88 in 2011-12 except in 2010-11. The pass percentage in B.Com. has steadily improved from 53.95 in 2008-09 to 67.19 in 2001-12. The B.Sc.(Comp. Science) course was started in 2008-09 academic year and the first batch graduated in 2010-11 academic year with 22.64 pass percentage but later it greatly improved and almost doubled in 2011-12 with 52 %.

5.2.3 How does the institution facilitate student progression to higher level of education and/or towards employment?

The institution facilitates student support and progression to higher level of education and towards employment by providing counseling by the teachers. The detailed information about the options available to them in P.G and other courses, their career prospects, their pattern of admissions and the resources for preparation i.e. syllabus, scheme of examination, reference books etc. is being provided to the students. Similarly, students are informed from time to time about the employment opportunities as and when they arise by collecting such information from advertisements and notifications issued by the recruiting agencies in print and electronic media including the internet.

5.2.4 Enumerate the special support provided to students who are at risk of failure and drop out?

The institution tries its best to minimize the dropout rate by paying special attention to the improvement of the socio-economic condition of the students. The students generally complete their courses with least financial burden. They are assisted by the institution through financial help in the form of scholarships from the government and books from the common library of the institution. Weak students who are not able to grasp the lectures properly are provided with remedial classes by the faculty members during zero hours. Students are also encouraged to take part in curricular, extracurricular activities.

5.3 Student Participation and Activities

5.3.1 List the range of sports, games, cultural and other extracurricular activities available to students. Provide details of participation and program calendar.

The games and sports like Cricket, kho kho, volley ball, kabaddi, caroms, chess and athletics are available to students. The extra curricular activities like Quiz, Debate, Antyakshari, Rangoli, Poster Making, Dance Competition, Skits, Drama, Mime, Mimicry, Vocal Music, Instrumental Music, Elocution, Essay writing etc are occasionally conducted. On eve of College Annual Day Celebrations, competitions among the students are conducted.

5.3.2 Furnish the details of major student achievements in co-curricular, extracurricular and cultural activities at different levels: activities at different levels: University / State / Zonal / National / International, etc. for the previous four years.

The following table shows the details of the student achievement in co-curricular, extracurricular and cultural activities at different levels:

S. No:	Name of the student	Course and Year	co-curricular, extracurricular activities	Level of participation	Prize won
1	J. Ranjith	B.Sc. - I	Spot painting	District level	Zonal 2 nd prize
2	M. Rajitha	B.Com. - III	Essay	District level	
3	V. Tejasri	B.Com. - III	Solo Song	District level	
4	V. Sai Krishna	B. A.- I	Mono Action	District level	
5	MD. Sabil	B.A - III	Essay	District level	
6	A. Divya	B.Sc. - III	Rangoli	District level	

5.3.3 How does the college seek and use data and feedback from its graduates and employers, to improve the performance and quality of the institutional provisions?

To improve the performance and quality of the institutional provisions, the feedback is being taken from the graduating students and based on the analysis of the data thus collected, necessary changes for improvement are undertaken.

5.3.4 How does the college involve and encourage students to publish materials like catalogues, wall magazines, college magazine, and other material? List the publications/ materials brought out by the students during the previous four academic sessions.

The students are involved and encouraged to contribute their creative writings and collections from newspapers and magazines to the college wall magazine “New Horizons” which is conceived and organized by Dr. P. Dinakar, Lecturer in English. Students have prepared the portraits and paintings of scientists and great personalities. They are placed in laboratories, library and various departments of the institution.

5.3.5 Does the college have a Student Council or any similar body? Give details on its selection, constitution, activities and funding.

The Institution has a student council. It is formed in democratic manner by nominating one student from each course. The committee coordinates the issues among the students and lecturers.

5.3.6 Give details of various academic and administrative bodies that have student representatives on them.

The details of academic and administrative bodies having students' representation:

(a) **Wall Magazine Committee:** The Committee is comprised of Chief Editor and Student Editors. The Committee invites creative writings and collections from students and teachers and pastes them in different corners of the wall magazine.

(b) **Cultural Committee:** This Committee is constituted with staff and student members to promote the cultural activities among the students. Culturally talented students are spotted by Committee members and the efforts are made to develop their skills and talents by encouragement, right training and performances.

(c) **Library Advisory Committee:** The Committee advises about books to be purchased for the library, student's facilities in the library, library timings and the availability of daily newspapers.

(d) **Study Tour Committee:** A well trained staff as chairman and a few staff and student members constitute this committee. They plan and execute the tour programmes and student visits.

5.3.7 How does the institution network and collaborate with the Alumni and former faculty of the Institution.

Alumni Association and the former faculty of the institution meet to discuss the matters related to the welfare of the institution. The association contributes by bringing their career experiences to the classroom as guest lecturers and they provide their valuable insights and inputs. Further, they are involved in material and monetary contributions for the college development.

CRITERION-VI
GOVERNANCE, LEADERSHIP
AND MANAGEMENT

CRITERION VI: GOVERNANCE, LEADERSHIP AND MANAGEMENT

6.1 Institutional Vision and Leadership

- 6.1.1 State the vision and mission of the Institution and enumerate on how the mission statement defines the institution's distinctive characteristics in terms of addressing the needs of the society, the students it seeks to serve, institution's traditions and value orientations, vision for the future, etc.?**

VISION :

To provide the transformational quality higher education that inculcates moral values, scientific temper, quest for excellence among students and make them a human resource of competence to serve the society and nation as responsible citizens.

MISSION :

1. To ensure access of all sections of the society to higher education in the context of existing socio-economic deprivation.
2. To create a teaching learning environment that facilitates the pursuit of higher knowledge.
3. To provide a platform to the students to realize their potential and to hone their skills and talents.
4. To create awareness of employment opportunities and to develop self reliant, enterprising and employable human resource.
5. To inculcate values like self-respect, social equality national integration, secularism and brotherhood by organizing various activities.
6. To sensitize to the value of discipline, sincerity and service and to develop the students into responsible citizens committed to social good.

OBJECTIVES :

1. To be transparent and impartial in admissions, academics, administration and examinations.
2. To acquire the necessary infrastructure, amenities and equipment from time to time.
3. To involve the influential people and philanthropists in college developmental activities.
4. To include latest technology such as ICT in the existing set of knowledge – impartation methods.
5. To ensure continuous evaluation and follow-up.
6. To provide students with opportunities to realize their talents and skills and to get career guidance.

The institution is located in a backward region where many people of lower strata are deprived of quality education. Our institution is serving them by fulfilling their higher education needs by offering quality education as well as by helping the students to realize their potential and to have all-round development through co-curricular and extra-curricular activities and thereby making them fit for employment/self employment for a bright future.

6.1.2 What is the role of top management, Principal and Faculty in design and implementation of its quality policy and plans?

The institution has C.P.D.C. (College Planning and Development Council), which is committed to the development of the institution in the field of higher education. The committee is headed by the Principal. It is always keen to provide all sorts of help for the promotion of quality education. The Principal will see that the members of C.P.D.C. attend all the important meetings held in the institution to know the needs of the institution and to come up with suggestions to enhance the quality of the education. They interact with the Principal, members of the faculty

and the students. Principal, who is the head of the institution designs annual plan for the academic year by incorporating all kinds of activities in the form of academic calendar following the guidelines provided by the Commissioner Collegiate Education, Hyderabad. The calendar includes curricula, co-curricular and extracurricular activities. The members of the faculty also play a pivotal role in the design, execution and monitoring of all plans and projects related to quality improvement. The teachers enlighten about the importance of various courses and their usefulness to the students in the job market and their utility in social developments. In this way, the committee, the principal and the faculty work together. All these stake holders play different roles and are ready to perform together for the common good of the students.

6.1.3 What is the involvement of the leadership in ensuring:

- **the policy statements and action plans for fulfillment of the stated mission**
- **formulation of action plans for all operations and incorporation of the same into the institutional strategic plan**
- **Interaction with stakeholders**
- **Proper support for policy and planning through need analysis, research inputs and consultations with the stakeholders**
- **Reinforcing the culture of excellence**
- **Champion organizational change**

The Principal convenes a staff meeting at the beginning of the academic year and formulates annual academic action plan in accordance with the mission by involving all the staff of the institution and instructs them to execute the same with their coordinated efforts. The progress is reviewed periodically through staff meetings and interactions with all the stakeholders. Based on their feed back, needful measures are taken. Further, the head of the institution maintain cordial relations with one and all and obtains the cooperation required for organizational changes as and when needed.

6.1.4 What are the procedures adopted by the institution to monitor and evaluate policies and plans of the institution for effective implementation and improvement from time to time?

The institution has effective coordination. All the wings are internally coordinated through the interaction, consultation and proper internal links. The head of the institution is at the centre of all the activities related to administration and academics. Annual Academic Audit will be conducted by the Academic Officers from the Academic Cell, O/o. CCE, Andhra Pradesh, Hyderabad. They propose and suggest some important and insightful suggestions for the all round development of the students. The same are followed meticulously without any deviation. The Head of the institution and the Academic Coordinator provides valuable suggestions to the members of the faculty in the periodical review meeting. This kind of mechanism helps the institution in the effective implementation and improvement of policies and plans of the institution.

6.1.5 Give details of the academic leadership provided to the faculty by the top management?

The head of the institution is in the leading role in governance and management of the institution. He connects the members of the staff, the students, the parents and other higher officials. He looks after all the activities related to administration, governance, management and academic activities including students' discipline. He inspires the staff members in staff meeting and in personal interaction to give their best in their teaching assignments. He communicates the policies and orders of the government to the members of the staff and works for the effective implementation of them. He is responsible to constitute different committees involving the staff members.

6.1.6 How does the college groom leadership at various levels?

The institution provides opportunities to develop the leadership qualities in both the faculty and the students. The faculty are appointed as conveners/ members on different committees with specific tasks wherein their leadership potential is realized. Similarly, the potential students are taken into different student committees i.e. Wall magazine committee, Cultural committee, Library advisory committee, Study tour committee, Anti ragging committee etc. At the top, the principal has to coordinate all the staff committees and student committees besides acting as the liaison officer to the higher authorities. Thus, the institution grooms leadership at various levels.

6.1.7 How does the college delegate authority and provide operational autonomy to the departments / units of the institution and work towards decentralized governance system?

The administration of the institution is systematically decentralized by constituting faculties pertaining to Arts, Sciences and Commerce departments. All the in-charges of the departments take decisions regarding academic issues in consultation with their colleagues. They purchase the items and materials required by inviting quotations, by surveying of market and inviting tenders. The head of the institution regularly visits laboratories and consults the department in charges and enquires about their requirements related to teaching aids and books, journals and other problems if any. The power is decentralized from the Principal to the heads of the institution and from them to the lecturers of the respective departments. The lecturers also allot certain duties to the student representatives. At regular intervals Principal organizes meetings of the faculty and discusses about the requirements of the departments and of the curriculum for the session.

6.1.8 Does the college promote a culture of participative management? If ‘yes’, indicate the levels of participative management.

The head of the institution is always encouraging and supportive to involve different stake holders in the realization of objectives designed for higher education. The institution strongly believes in the improvement of the effectiveness and efficiency of the institutional process. The Principal through the heads of the departments and academic coordinator involves the staff members in various activities related to the development of the college. The staff members are involved by way of constitution of various committees such as Construction Committee, Purchase Committee, Finance Committee, Examination Committee, etc. In this way the institution promotes a culture of participative management for effective implementation of all policies and works.

6.2 Strategy Development and Deployment

6.2.1 Does the Institution have a formally stated quality policy? How is it developed, driven, deployed and reviewed?

As this is a government institution, there is no formally stated quality policy of its own. However, the institute is committed to the maintenance of quality. The institution formulates, improves and implements plans accordingly to achieve academic standards set by the government. The quality maintenance is reviewed monthly, preferably at the end of the month. To fulfill the institution’s mission and offer quality programmes, the institution generates budgetary resources from the budget allotted by the Government, and the fees collected from the students and the assistance received from UGC.

6.2.2 Does the Institution have a perspective plan for development? If so, give the aspects considered for inclusion in the plan.

Yes. The institution has a perspective academic plan which is placed before the general meeting held by the head of the institution in the beginning of the academic year. It includes all aspects related to curricular, co-curricular and extracurricular activities.

6.2.3 Describe the internal organizational structure and decision making processes.

The institution has the different internal organizational structure comprising various decision making bodies. They include Academic Committee, Financial Committee and Infrastructural Committee. Academic Committee will take care of admission process and examination process. They also take care of library, curricular, co-curricular and extracurricular activities of various departments. The Financial Committee will take care of all financial matters in consultation with the head of the institution and the incharges of the respective departments. The Infrastructural Committee decides on the matters related to the quality of construction of buildings and purchase of necessary infrastructure to the institution.

6.2.4 Give a broad description of the quality improvement strategies of the institution for each of the following

- **Teaching & Learning**
- **Research & Development**
- **Community engagement**
- **Human resource management**
- **Industry interaction**

The institution, while striving for the all round development of the students, mainly concentrates on the academic matters. For this purpose, a systematic

academic plan is made at the beginning of the academic year and is implemented meticulously. Rigorous internal assessment of students' performance is made through unit tests, quarterly, half yearly examinations. The weak and the slow learners are identified and given remedial coaching. All aspects of teaching and learning, and the curricular, co-curricular, extra-curricular activities are implemented as planned. All the valuable suggestions for quality improvement from the alumni, community and CPDC members are acted upon.

6.2.5 How does the Head of the institution ensure that adequate information (from feedback and personal contacts etc.) is available for the top management and the stakeholders, to review the activities of the institution?

The head of the institution ensures that all the necessary information is available in the desired pro-forma to the top management i.e. the Commissioner of Collegiate Education, A.P., Hyderabad through his prompt correspondence. Periodic meetings with various stakeholders like students, parents, CPDC members and the alumni are held throughout the year and all the necessary information is shared with them. Apart from these, all the basic information is placed on the college website for access by all and it is updated as and when needed.

6.2.6 How does the management encourage and support involvement of the staff in improving the effectiveness and efficiency of the institutional processes?

The management involves all the staff in all phases of institutional processes like planning, implementing, reviewing and revising to ensure the effectiveness and efficiency.

6.2.7 Enumerate the resolutions made by the Management Council in the last year and the status of implementation of such resolutions.

As this is a government institution, no management council exists. However, the institution has an advisory body namely the College Planning and Development Council (CPDC). As per the resolutions of the CPDC, the alumni and the community were involved in the development activities of the college. As a result, an arch board at the college entrance was erected, safe drinking water system was provided, a bore-well was dug and the efforts to improve the results are going on.

6.2.8 Does the affiliating university make a provision for according the status of autonomy to an affiliated institution? If ‘yes’, what are the efforts made by the institution in obtaining autonomy?

No. The institution is not autonomous.

6.2.9 How does the Institution ensure that grievances / complaints are promptly attended to and resolved effectively? Is there a mechanism to analyze the nature of grievances for promoting better stakeholder relationship?

The institution has the mechanism for grievances/ complaints under the chairmanship of the principal and two more senior faculty members as members who attend to and resolve the grievances of the students and lecturers effectively. The Principal of the institution communicates the grievances to the concerned authority and work for their redressal.

6.2.10 During the last four years, had there been any instances of court cases filed by and against the institution? Provide details on the issues and decisions of the courts on these?

Mr. K. Venkaiah, the part time lecturer in Economics, who has been working on the same status for 21 years, filed a case against the Commissioner and the Principal Secretary for Higher Education requesting the Principal of the college to regularize his services.

6.2.11 Does the Institution have a mechanism for analyzing student feedback on institutional performance? If ‘yes’, what was the outcome and response of the institution to such an effort?

Though there is no specific mechanism, the institution collects the students’ oral feedback on institutional performance by interacting with them and takes necessary action from time to time.

6.3 Faculty Empowerment Strategies

6.3.1 What are the efforts made by the institution to enhance the professional development of its teaching and non teaching staff?

The institution encourages the teaching staff to undergo Orientation Courses, Refresher Courses conducted by prestigious universities for three or four weeks in an academic year. The English lecturers are permitted to undergo ELF Training Programmes conducted by the CCE, A.P., Hyderabad in collaboration with the US State Department.

6.3.2 What are the strategies adopted by the institution for faculty empowerment through training, retraining and motivating the employees for the roles and responsibility they perform?

The head of the institution and the Academic Coordinator conducts special classes formally and informally for the teaching and the non-teaching staff on their roles and responsibilities.

6.3.3 Provide details on the performance appraisal system of the staff to evaluate and ensure that information on multiple activities is appropriately captured and considered for better appraisal.

No specific appraisal system of the staff exists. However, the Commissioner of Collegiate Education, Hyderabad frequently conducts review meetings and evaluates the performance of staff.

6.3.4 What is the outcome of the review of the performance appraisal reports by the management and the major decisions taken? How are they communicated to the appropriate stakeholders?

On the basis of the information collected from different ways, the Commissioner of Collegiate Education, A.P., Hyderabad reviews the appraisal reports of staff and takes major decisions and communicates them through proper channel.

6.3.5 What are the welfare schemes available for teaching and non teaching staff? What percentage of staff have availed the benefit of such schemes in the last four years?

Fee reimbursement facilities are available to the children of non-teaching staff and medical reimbursement facilities are available for the teaching. Approximately 15 percent of the staff have availed this scheme.

6.3.6 What are the measures taken by the Institution for attracting and retaining eminent faculty?

As this a government institution, all the service matters like appointment, transfers, promotions etc., are looked after by the Commissioner of Collegiate Education, A.P., Hyderabad

6.4 Financial Management and Resource Mobilization

6.4.1 What is the institutional mechanism to monitor effective and efficient use of available financial resources?

The institution has Finance Committee, which will take care of all financial matters. They look after all the budget provision released by the government and also raise the funds by collecting donations from the wealthy and interested people of the community for the development of the institution.

6.4.2 What are the institutional mechanisms for internal and external audit? When was the last audit done and what are the major audit objections? Provide the details on compliance.

Financial audit will be done by the District Treasury Officials and the last time audit done was done from 16th to 20th January, 2007. No financial objections were raised by them.

6.4.3 What are the major sources of institutional receipts/funding and how is the deficit managed? Provide audited income and expenditure statement of academic and administrative activities of the previous four years and the reserve fund/corpus available with Institutions, if any.

The Government of Andhra Pradesh and University Grants Commission are the major sources of institutional receipts/funding. The special fee collected from the students is also a source of income to the institution. The college being Government owned, only the budget allotted will be utilized. Hence, there is no deficit. If any funds are needed, a representation may be submitted to the Government for consideration. The following table shows the details of income and expenditure of the institution.

S.No.	Year	Total Income (Rs.)	Total Expenditure (Rs.)
1	2008-09	4164532	4142213
2	2009-10	5402943	5259731
3	2010-11	9190185	9162407
4	2011-12	12208601	11921499

Total Accumulated fund as on 31-03-2012, Rs. 4,99,472/- is available with institution which can be utilized with the prior permission of the Commissioner of Collegiate Education, Hyderabad.

6.4.4 Give details on the efforts made by the institution in securing additional funding and the utilization of the same (if any).

We have plans to raise funds from different sources in the current academic year like CPDC, the alumni, the local leaders and the philanthropists.

6.5 Internal Quality Assurance System (IQAS)

6.5.1 Internal Quality Assurance Cell (IQAC)

- a. Has the institution established an Internal Quality Assurance Cell (IQAC)?
If 'yes', what is the institutional policy with regard to quality assurance and how has it contributed in institutionalizing the quality assurance processes?
- b. How many decisions of the IQAC have been approved by the management/ authorities for implementation and how many of them were actually implemented?
- c. Does the IQAC have external members on its committee? If so, mention any significant contribution made by them.
- d. How do students and alumni contribute to the effective functioning of the IQAC?
- e. How does the IQAC communicate and engage staff from different constituents of the institution?

The institution has no formal IQAC but there is a committee comprising senior teachers. They assess the quality in terms of the institution's objectives and teaching-learning outcomes as evident in students' performance. They discuss and suggests possible ways of improving quality of instruction and student output.

6.5.2 Does the institution have an integrated framework for Quality assurance of the academic and administrative activities? If 'yes', give details on its operationalisation.

The institution does not have an integrated frame work for quality assurance except that a committee comprising senior lecturers and other members look in to the quality aspects and offer their guidance for improvement from time to time.

6.5.3 Does the institution provide training to its staff for effective implementation of the Quality assurance procedures? If 'yes', give details enumerating its impact.

The institution provides no training to its staff for effective implementation of the quality assurance procedures. However, the staff is emphatically instructed frequently to explore and implement all possible means for quality maintenance and enhancement.

6.5.4 Does the institution undertake Academic Audit or other external review of the academic provisions? If 'yes', how are the outcomes used to improve the institutional activities?

Yes. The institution undertakes Academic Audit by the Academic Cell of the Commissionerate of Collegiate Education every year and after the proper review, the advice given by the committee shall be implemented.

6.5.5 How is the internal quality assurance mechanisms aligned with the requirements of the relevant external quality assurance agencies/regulatory authorities?

The internal quality assurance mechanism extends its full hand of cooperation for the external quality assurance agencies in each and every field.

6.5.6 What institutional mechanisms are in place to continuously review the teaching learning process? Give details of its structure, methodologies of operations and outcome?

The teaching-learning process is continuously monitored by the principal of the institution with the help of Academic Coordinator. They monitor the syllabus and its coverage, writing of teaching diaries and finally they also verify teaching notes of the lecturers.

6.5.7 How does the institution communicate its quality assurance policies, mechanisms and outcomes to the various internal and external stakeholders?

The institution communicates its quality assurance policies, mechanisms and outcomes to all its stakeholders through annual academic reports and annual work plans.

CRITERION-VII
INNOVATIONS AND BEST
PRACTICES

CRITERIA VII: INNOVATIONS AND BEST PRACTICES

7.1 Environment Consciousness

7.1.1 Does the Institution conduct a Green Audit of its campus and facilities?

The institution has green audit by the way of planting saplings on the eve of the World Earth Day and World Environment Day. It also takes up the clean and green programme every month.

7.1.2 What are the initiatives taken by the college to make the campus eco-friendly?

The institution has given top priority to plantation and we are trying to make the campus green.

7.2 Innovations

7.2.1 Give details of innovations introduced during the last four years which have created a positive impact on the functioning of the college.

The following innovative activities have created a positive impact on the functioning of the institution. The process of dissemination of knowledge through JKC helped the students in better placements in the market. The life skills to the students offered by the institution through internal and external lectures will be of help to cope with the adjustment problem in their future course of life. The competitive spirit among the students was boosted up by organizing extension lectures on employability skills, as proved by the good results. The positive interactions with people successful in the competitive examinations and in the work field have thrown a positive light on the personality of the students.

7.3 Best Practices

7.3.1 Elaborate on any two best practices as per the annexed format which have contributed to the achievement of the Institutional Objectives and/or contributed to the Quality improvement of the core activities of the college.

Best Practice - I

1. Title of the Practice

Conducting of Yoga Classes.

2. Goal

As the yoga is the ancient Indian system of healing and curing the physical and psychological ailments, it is introduced to the students to have holistic personality. The goal is to

- Bring about behavioral changes
- Increase the emotional quotient of the students
- Helps the students have physical and mental health, agility, memory and concentration in their studies.

3. The Context

As the students are going to step out either for higher studies or for employment/self employment, they need to develop their emotional quotient along with the professional competence for succeeding amid challenges they would be facing in life. They also have to behave as responsible citizens. Yoga plays a helpful role in this context.

4. The Practice

The students are provided with theory cum practical classes for an hour a week on the campus and they are advised to practice daily from half an hour to one hour in their homes. Mr. M. Madhukar Rao, Lecturer in Hindi takes Yoga classes for the faculty members and students. In addition, some other Yoga classes are arranged by inviting experts from outside, like Brahmakumari Samaj members.

5. Evidence of Success

The stakeholders of the institution have been benefitted with the practical cum theory classes of Yoga. There is a behavioral change among the students. They now appear to have peaceful mind and are participating in the curricular and co-

curricular activities positively. Yoga helped the students to control the temptations and to overcome the problems of maladjustment with the peers, the faculty and the society. The emotional quotient has increased considerably by practice of yoga.

6. Problems Encountered and Resources Required

There are certain problems in conducting the yoga classes on the campus. Particularly the early hours are the most suitable time for practicing yoga but the students cannot turn up at that time to the institution. The institution has no auditorium to practice yoga. There is no specially trained member of the faculty to train up the students. The institution requires an indoor stadium or auditorium for the students to practice yoga. It requires a well trained Yoga master for conducting classes.

Best Practice - II

1. Title of the Practice

Value Based Education

2. Goal

- To cause behavioral changes
- To inculcate values like discipline, sincerity, accountability, service etc.
- To help become good citizens.
- To help maintain better relationships in life.

3. The Context

The Under Graduate students are soon going to be a significant section of the upcoming generation with a crucial role to play in the society. Hence, they need to be groomed as people with regard for human values like honesty, accountability, service motto, punctuality and so on. The value based education supplements the knowledge base with values that will stand them good in the social responsibilities in future.

4. The Practice

Value Based Education is included in the curriculum. The faculty members take classes with regular intervals on values and ethics to be followed in the society. They explain their real life experiences, anecdotes to substantiate their argument regarding the role of values and ethics in human life. They help develop a strong commitment among the students to have a positive opinion on the value based education. A well organized library equipped with relevant reference books helps as an additional and supportive means and resource to inculcate the value based education.

5. Evidence of Success

The incorporation of value based education as part of the curriculum has shown positive results in the behaviour of the students. They are respecting their parents, teachers and all the elders of the society. They are attending to the classes regularly and their emotional quotient is also well balanced. They are adjusting to the new situations with positive attitude. They are cooperating with all the stakeholders of the institution. It is proved that they are behaving with sincerity and honesty on the campus. They have a positive opinion on the student fraternity.

6. Problems Encountered and Resources Required

In the beginning the faculty faced problems in teaching the values to the students because they strongly believed that they knew all these issues. They also felt that the values taught by the teachers were not going to help them in any way in their day to day life. They had doubts regarding the practicality of the values. They felt that what they learn in the classroom would not match with the reality outside. But the patient explanations, sympathetic attitude and persuasive efforts of the staff prevailed in winning over the students.

7. Contact Details

Name of the Principal:	Dr. R. Ramaiah
Name of the Institution:	Govt. Degree College, Koratla.
City:	Karimnagar
Pin Code:	505326
Accredited Status:	Fresh
Work Phone :	08725-252160
Website:	www.gdckoratrla.com
E-mail:	knr.gdckorutlajkc@gmail.com , gdckoratla@yahoo.com

EVALUATIVE REPORT OF THE DEPARTMENTS

Evaluative Report of the Department of English

1. Name of the department : **Department of English,
Govt. Degree College, Koratla,
Dist. Karimnagar – 505 326, A.P.**
2. Year of Establishment : **1981**
3. Names of Programmes / Courses offered (UG, PG, M.Phil., Ph.D., Integrated Masters; Integrated Ph.D., etc.) : **U.G courses including
B.A. (HEP) (T/M & U/M),
B.Sc.(BZC, MPC & MPCs),
B.Com(General)(T/M) & B.Com(Comp.Appl)(E/M)**
4. Names of Interdisciplinary courses and the departments/units involved : **N.A.**
5. Annual/ semester/choice based credit system (programme wise) : **Annual**
6. Participation of the department in the courses offered by other departments : **N.A.**
7. Courses in collaboration with other universities, industries, foreign institutions, etc. : **N.A.**
8. Details of courses/programmes discontinued (if any) with reasons : **N.A.**
9. Number of Teaching posts

Name of the Post	Sanctioned	Filled
Professors	-	-
Associate Professors	-	-
Asst. Professors	02	02

10. Faculty profile with name, qualification, designation, specialization, (D.Sc./D.Litt. /Ph.D. / M. Phil. etc.,)

Name	Qualification	Designation	Specialization	No. of Years of Experience	No. of Ph.D. Students guided for the last 4 years
1. Sri. R. George	M.A., M.Phil	Lecturer in English	American Literature	JL 26 DL 02	Nil
2. Dr. P. Dinakar	M.A., M.Phil., Ph.D., PGDTE, B.Ed	Lecturer in English	English Language Teaching	14 SA 01 DL	Nil

11. List of senior visiting faculty :

- i. **Mr. Parashurama Rao, Lecturer in English,
SRR Degree College, Karimnagar.**
- ii. **Smt. Ammayee, Lecturer in English,
Govt. Degree College (W), Karimnagar.**

12. Percentage of lectures delivered and practical classes handled (programme wise) by temporary faculty : **Nil**

13. Student -Teacher Ratio (programme wise) : **1 : 218**

14. Number of academic support staff (technical) and administrative staff; sanctioned and filled : **N.A.**

15. Qualifications of teaching faculty with DSc/ D.Litt/ Ph.D/ MPhil/PG.: **02**

16. Number of faculty with ongoing projects from a) National b) International funding agencies and grants received; : **Nil**

17. Departmental projects funded by DST-FIST; UGC, DBT, ICSSR, etc. and total grants received : **Nil**

18. Research Centre /facility recognized by the University : **N.A.**

19. Publications:

- * Publication per faculty : **05**
- * Number of papers published in peer reviewed journals (national / international) by faculty and students : **12**
- * Number of publications listed in International Database (For Eg:

Web of Science, Scopus, Humanities International Complete, Dare Database - International Social Sciences Directory, EBSCO host, etc.)

- : Nil
 - * Monographs : Nil
 - * Chapter in Books : 01
 - * Books Edited : Nil
 - * Books with ISBN/ISSN numbers with details of publishers: Nil
 - * Citation Index : Nil
 - * SNIP : Nil
 - * SJR : Nil
 - * Impact factor : -
 - * h-index : -
 - 20. Areas of consultancy and income generated : Nil
 - 21. Faculty as members in
 - a) National committees : Nil
 - b) International Committees : Nil
 - c) Editorial Boards.... : 1. Dr. P. Dinakar,
- ELTA Journal – ELT News, Published from Warangal**
- 22. Student projects
 - a) Percentage of students who have done in-house projects including inter departmental/programme : Nil
 - b) Percentage of students placed for projects in organizations outside the institution i.e. in Research laboratories/Industry/other agencies : Nil
 - 23. Awards/ Recognitions received by faculty and students
 - a. **Best Teacher Award** by Dept. of School Education, A.P. on 5th September, 2010 to Dr. P. Dinakar
 - b. **Best Teacher Award** by Andhra Pradesh Upadhyaya Sangham (APUS), Warangal on the eve of Guru Purnima in 2010 to Dr. P. Dinakar
 - c. **Best Resource Person** by Regional Joint Director of School Education, Warangal in 2005 Dr. P. Dinakar

24. List of eminent academicians and scientists/ visitors to the department
: Nil

25. Seminars/ Conferences/Workshops organized & the source of funding

a)National : Nil

b)International : Nil

26. Student profile programme/course wise:

Name of the Course/programme (refer question no. 4)	Applications received	Selected	Enrolled	
			*M	*F
B.A. (T/M) 2008-09	134	103	57	46
B.A.(U/M) 2008-09	52	49	22	27
B.Com (Gen) 2008-09	78	71	61	10
B.Com (C.A) 2008-09	55	48	38	10
B.Sc. (BZC) 2008-09	54	48	33	15
B.Sc. (MPC) 2008-09	32	29	21	8
B.A. (T/M) 2009-10	91	83	47	36
B.A.(U/M) 2009-10	72	65	38	27
B.Com (Gen) 2009-10	56	52	36	16
B.Com (C.A) 2009-10	62	55	43	12
B.Sc. (BZC) 2009-10	39	33	14	19
B.Sc. (MPC) 2009-10	37	32	13	19
B.A. (T/M) 2010-11	112	104	61	43
B.A.(U/M) 2010-11	72	68	23	45
B.Com (Gen) 2010-11	73	68	52	16
B.Com (C.A) 2010-11	66	60	40	20
B.Sc. (BZC) 2010-11	32	25	12	13
B.Sc. (MPC) 2010-11	61	54	35	19
B.A. (T/M) 2011-12	72	66	50	16
B.A.(U/M) 2011-12	54	49	19	30
B.Com (Gen) 2011-12	68	63	44	19
B.Com (C.A) 2011-12	53	47	38	9
B.Sc. (BZC) 2011-12	32	27	10	17
B.Sc. (MPC) 2011-12	18	12	4	8
B.Sc. (MPCs) 2011-12	25	19	14	5

Name of the Course/programme (refer question no. 4)	Applications received	Selected	Enrolled	
			*M	*F
B.A. (T/M) 2012-13	53	45	26	19
B.A.(U/M) 2012-13	58	53	20	33
B.Com (Gen) 2012-13	31	28	17	11
B.Com (C.A) 2012-13	73	37	23	14
B.Sc. (BZC) 2012-13	12	9	5	4
B.Sc. (MPC) 2012-13	6	4	4	0
B.Sc. (MPCs) 2012-13	26	22	13	9

*M=Male F=Female

Pass percentage year wise

Year	English Paper-I			English Paper-II			Total %
	Appeared	Passed	%	Appeared	Passed	%	
2008-09	250	112	44.80	223	171	76.68	59.83
2009-10	272	143	52.57	269	237	88.10	70.24
2010-11	314	154	49.04	234	153	65.38	56.02
2011-12	245	156	63.67	245	193	78.77	71.22

27. Diversity of Students

Name of the Course	% of students from the same state	% of students from other States	% of students from abroad
B.A.(T/M)	100	Nil	Nil
B.A.(U/M)	100	Nil	Nil
B.Sc.(MPC T/M)	100	Nil	Nil
B.Sc.(MPCs T/M)	100	Nil	Nil
B.Sc.(BZC T/M)	100	Nil	Nil
B.Com (General T/M)	100	Nil	Nil
B.Com (Comp. Appl T/M)	100	Nil	Nil

28. How many students have cleared national and state competitive examinations such as NET, SLET, GATE, Civil services, Defense services, etc.? : **Nil**

29. Student progression

Student progression	Against % enrolled
UG to PG	05
PG to M.Phil.	-
PG to Ph.D.	-
Ph.D. to Post-Doctoral	-
Employed	-
• Campus selection	
• Other than campus recruitment	
Entrepreneurship/Self-employment	50

30. Details of Infrastructural facilities

- a) Library : **Common Library**
b) Internet facilities for Staff & Students : **Available at JKC**
c) Class rooms with ICT facility : **e-Class**
d) Laboratories : **-**

31. Number of students receiving financial assistance from college, university, government or other agencies:

70 % of students are receiving financial assistance in the form of scholarships under different categories from Government.

32. Details on student enrichment programmes (special lectures / workshops / seminar) with external experts : **01**

33. Teaching methods adopted to improve student learning: **Student Centered Teaching with Communicative Language Teaching as an effective approach for teaching English.**

34. Participation in Institutional Social Responsibility (ISR) and Extension activities : **Nil**

35. SWOC analysis of the department and Future plans :

Strengths

- Well qualified and experienced faculty
- Commitment to quality teaching

Weaknesses

- Lack of departmental library
- Inadequate TLM
- Lack of ELL to train in language skills

Opportunities

- Increasing the number of Seminars, group discussions and Just-A-Minute activities
- Creating awareness about the importance of communication in English in the context of globalization.

Challenges

- Bridging the knowledge gap in English in the newly admitted students.
- Students with poor vocabulary

Future plans

- To conduct an orientation programme to the English teachers of Koratla Mandal.
- To introduce a certificate course in 'Spoken English'.
- To establish a well furnished departmental library.

Evaluative Report of the Department of Telugu

1. Name of the department : **Department of Telugu,
Govt. Degree College, Koratla,
Dist.Karimnagar-505326, A.P.**
2. Year of Establishment : **1981**
3. Names of Programmes / Courses offered (UG, PG, M.Phil., Ph.D., Integrated Masters; Integrated Ph.D., etc.) : **U.G courses including
B.A. (HEP) (T/M),
B.Sc.(BZC, MPC & MPCs T/M),
B.Com (General & Comp.Appl T/M)**
4. Names of Interdisciplinary courses and the departments/units involved : **N.A.**
5. Annual/ semester/choice based credit system (programme wise) : **Annual**
6. Participation of the department in the courses offered by other departments : **N.A.**
7. Courses in collaboration with other universities, industries, foreign institutions, etc. : **N.A.**
8. Details of courses/programmes discontinued (if any) with reasons : **N.A.**
9. Number of Teaching posts

Name of the Post	Sanctioned	Filled
Professors	-	-
Associate Professors	-	-
Asst. Professors	01	01

10. Faculty profile with name, qualification, designation, specialization, (D.Sc./D.Litt. /Ph.D. / M. Phil. etc.,)

Name	Qualification	Designation	Specialization	No. of Years of Experience	No. of Ph.D. Students guided for the last 4 years
1.. A. Raju	M.A., T.P.T	Lecturer in Telugu	Janapada sahityam (Folk Literature)	08	N.A.

11. List of senior visiting faculty : **1. Dr. Ramakrishna, Lecturer in Telugu, SRR Govt. Degree & PG College, Karimnagar.**

12. Percentage of lectures delivered and practical classes handled (programme wise) by temporary faculty : **N.A.**

13. Student -Teacher Ratio (programme wise): **307 : 1**

14. Number of academic support staff (technical) and administrative staff; sanctioned and filled : **N.A.**

15. Qualifications of teaching faculty with DSc/ D.Litt/ Ph.D/ MPhil/PG. : **01**

16. Number of faculty with ongoing projects from a) National b) International funding agencies and grants received; : **Nil**

17. Departmental projects funded by DST-FIST; UGC, DBT, ICSSR, etc. and total grants received : **Nil**

18. Research Centre /facility recognized by the University : **N.A.**

19. Publications:

- * Publication per faculty
- * Number of papers published in peer reviewed journals (national / international) by faculty and students : **Nil**
- * Number of publications listed in International Database (For Eg: Web of Science, Scopus, Humanities International Complete, Dare Database - International Social Sciences Directory, EBSCO host, etc.) : **Nil**

*	Monographs	: Nil
*	Chapter in Books	: Nil
*	Books Edited	: Nil
*	Books with ISBN/ISSN numbers with details of publishers	: Nil
*	Citation Index	: Nil
*	SNIP	: Nil
*	SJR	: Nil
*	Impact factor	: -
*	h-index	: -

20. Areas of consultancy and income generated : Nil

21. Faculty as members in

- | | |
|-----------------------------|-------|
| a) National committees | : Nil |
| b) International Committees | : Nil |
| c) Editorial Boards.... | : Nil |

22. Student projects

- | | |
|--|-------|
| a) Percentage of students who have done in-house projects including inter departmental/programme | : Nil |
| b) Percentage of students placed for projects in organizations outside the institution i.e. in Research laboratories/Industry/other agencies | : Nil |

23. Awards/ Recognitions received by faculty and students : Nil

24. List of eminent academicians and scientists/ visitors to the department : Nil

25. Seminars/ Conferences/Workshops organized & the source of funding

- | | |
|------------------|-------|
| a) National | : Nil |
| b) International | : Nil |

26. Student profile programme/course wise:

Name of the Course/programme (refer question no. 4)	Applications received	Selected	Enrolled	
			*M	*F
B.A. (T/M) 2008-09	128	99	56	43
B.A.(U/M) 2008-09	52	49	22	27
B.Com (Gen) 2008-09	71	66	56	10
B.Com (C.A) 2008-09	55	48	38	10
B.Sc. (BZC) 2008-09	52	46	32	14
B.Sc. (MPC) 2008-09	30	28	21	7
B.A. (T/M) 2009-10	90	82	46	36
B.A.(U/M) 2009-10	72	65	38	27
B.Com (Gen) 2009-10	56	52	36	16
B.Com (C.A) 2009-10	62	55	43	12
B.Sc. (BZC) 2009-10	38	32	13	19
B.Sc. (MPC) 2009-10	37	32	13	19
B.A. (T/M) 2010-11	112	104	61	43
B.A.(U/M) 2010-11	72	68	23	45
B.Com (Gen) 2010-11	67	60	48	16
B.Com (C.A) 2010-11	64	58	39	19
B.Sc. (BZC) 2010-11	32	25	12	13
B.Sc. (MPC) 2010-11	61	54	35	19
B.A. (T/M) 2011-12	70	65	49	16
B.A.(U/M) 2011-12	54	49	19	30
B.Com (Gen) 2011-12	61	57	38	18
B.Com (C.A) 2011-12	46	41	33	9
B.Sc. (BZC) 2011-12	30	25	9	15
B.Sc. (MPC) 2011-12	16	11	4	8
B.Sc. (MPCs) 2011-12	25	19	14	5
B.A. (T/M) 2012-13	49	44	25	19
B.A.(U/M) 2012-13	58	53	20	33
B.Com (Gen) 2012-13	29	26	15	11
B.Com (C.A) 2012-13	71	35	21	14
B.Sc. (BZC) 2012-13	12	9	5	4
B.Sc. (MPC) 2012-13	22	20	11	9
B.Sc. (MPCs) 2012-13	6	4	4	0

Pass percentage year wise

Year	Telugu Paper-I			Telugu Paper-II			Total %
	Appeared	Passed	%	Appeared	Passed	%	
2008-09	241	225	93.36	170	159	93.53	93.43
2009-10	210	195	92.85	222	204	91.89	92.36
2010-11	249	223	89.55	178	154	86.51	88.29
2011-12	181	173	95.58	201	186	92.53	93.97

27. Diversity of Students

Name of the Course	% of students from the same state	% of students from other States	% of students from abroad
B.A.	100	Nil	Nil
B.Com	100	Nil	Nil
B.Sc.	100	Nil	Nil

28. How many students have cleared national and state competitive examinations such as NET, SLET, GATE, Civil services, Defense services, etc.? : **02**

29. Student progression

Student progression	Against % enrolled
UG to PG	02
PG to M.Phil.	-
PG to Ph.D.	-
Ph.D. to Post-Doctoral	-
Employed	-
• Campus selection	
• Other than campus recruitment	
Entrepreneurship/Self-employment	50

30. Details of Infrastructural facilities

- a) Library : **Common Library**
- b) Internet facilities for Staff & Students : **Available at JKC**
- c) Class rooms with ICT facility : **e-Class**
- d) Laboratories : **N.A.**

31. Number of students receiving financial assistance from college, university, government or other agencies :
70 % of students are receiving financial assistance in the form of scholarships under different categories from Government.
32. Details on student enrichment programmes (special lectures /workshops / seminar) with external experts :
1. 'Mathru Bhasha Dinostavam' conducted on 29-08-2012
2. 'Antharjateeya mathru bhasha dinostavam' (International Mother Tongue Day) conducted 21-02-2013.
33. Teaching methods adopted to improve student learning :
Student Centered Teaching with Communicative Language Teaching as an effective approach for teaching Telugu viz. Poetry, Prose, Grammar, Essay Method, Non-detailed Method, Story Method and Drama Method.
34. Participation in Institutional Social Responsibility (ISR) and Extension activities : **NSS**
35. SWOC analysis of the department and Future plans :

Strengths

- Sincere and hard working faculty
- Good aptitude in conducting the cultural activities
- Ability to generate interest in literature.

Weaknesses

- Inadequate departmental library
- Excessive workload

Opportunities

- To bring out the latent creativity in the students.
- To produce articles on linguistic features of Telugu.

Challenges

- Students with low image of Telugu.

Future plans

- To acquire good collection of books for the departmental library.

Evaluative Report of the Department of Hindi

1. Name of the department : **Department of Hindi,
Govt. Degree College, Koratla,
Dist.Karimnagar-505326, A.P.**
2. Year of Establishment : **1981**
3. Names of Programmes / Courses offered (UG, PG, M.Phil., Ph.D., Integrated Masters; Integrated Ph.D., etc.) : **U.G courses including
B.A. (HEP),
B.Sc.(BZC, MPC & MPCs),
B.Com (General & Comp.Appl)**
4. Names of Interdisciplinary courses and the departments/units involved : **N.A.**
5. Annual/ semester/choice based credit system (programme wise) : **Annual**
6. Participation of the department in the courses offered by other departments : **N.A**
7. Courses in collaboration with other universities, industries, foreign institutions, etc. : **N.A.**
8. Details of courses/programmes discontinued (if any) with reasons : **N.A.**
9. Number of Teaching posts

Name of the Post	Sanctioned	Filled
Professors	-	-
Associate Professors	-	-
Asst. Professors	01	01

10. Faculty profile with name, qualification, designation, specialization, (D.Sc./D.Litt. /Ph.D. / M. Phil. etc.,)

Name	Qualification	Designation	Specialization	No. of Years of Experience	No. of Ph.D. Students guided for the last 4 years
1. M. Madhukar Rao	M.A., B.Ed., SLET	Lecturer in Hindi	Life of Premchand	1	-

11. List of senior visiting faculty : **1. Ajay, Lecturer in Hindi,**

GDC Paloncha, Dt. Khammam.

12. Percentage of lectures delivered and practical classes handled (programme wise) by temporary faculty : **N.A.**

13. Student -Teacher Ratio (programme wise): **27 : 1**

14. Number of academic support staff (technical) and administrative staff; sanctioned and filled : **N.A.**

15. Qualifications of teaching faculty with DSc/ D.Litt/ Ph.D/ MPhil/PG. : **01**

16. Number of faculty with ongoing projects from a) National b) International funding agencies and grants received; : **Nil**

17. Departmental projects funded by DST-FIST; UGC, DBT, ICSSR, etc. and total grants received : **Nil**

18. Research Centre /facility recognized by the University : **N.A.**

19. Publications:

* Publication per faculty : **Nil**

* Number of papers published in peer reviewed journals (national / international) by faculty and students : **Nil**

* Number of publications listed in International Database (For Eg: Web of Science, Scopus, Humanities International Complete, Dare Database - International Social Sciences Directory, EBSCO host, etc.) : **Nil**

* Monographs : **Nil**

* Chapter in Books : **Nil**

- * Books Edited : Nil
- * Books with ISBN/ISSN numbers with details of publishers : Nil
- * Citation Index : Nil
- * SNIP : Nil
- * SJR : Nil
- * Impact factor : -
- * h-index : -

20. Areas of consultancy and income generated : Nil

21. Faculty as members in

- a) National committees : Nil
- b) International Committees : Nil
- c) Editorial Boards.... : Nil

22. Student projects

- a) Percentage of students who have done in-house projects including inter departmental/programme : Nil
- b) Percentage of students placed for projects in organizations outside the institution i.e. in Research laboratories/Industry/other agencies : Nil

23. Awards/ Recognitions received by faculty and students : Nil

24. List of eminent academicians and scientists/ visitors to the department : Nil

25. Seminars/ Conferences/Workshops organized & the source of funding

- a)National : Nil
- b)International : Nil

26. Student profile programme/course wise:

Name of the Course/programme (refer question no. 4)	Applications received	Selected	Enrolled	
			*M	*F
B.A. 2008-09	6	4	1	3
B.Com 2008-09	7	5	5	0
B.Sc. 2008-09	4	3	1	2
B.A. 2009-10	1	1	1	0
B.Com 2009-10	5	4	3	1

Name of the Course/programme (refer question no. 4)	Applications received	Selected	Enrolled	
			*M	*F
B.Sc. 2009-10	1	1	1	0
B.A. 2010-11	0	0	0	0
B.Com 2010-11	3	2	2	0
B.Sc. 2010-11	0	0	0	0
B.A. 2011-12	2	1	1	0
B.Com 2011-12	14	12	11	1
B.Sc. 2011-12	4	3	1	2
B.A. 2012-13	4	1	1	0
B.Com 2012-13	4	4	4	0
B.Sc. 2012-13	4	2	2	0

*M=Male F=Female

Pass percentage year wise

Year	Hindi Paper-I			Hindi Paper-II			Total %
	Appeared	Passed	%	Appeared	Passed	%	
2008-09	12	12	100.00	11	11	100.00	100.00
2009-10	06	06	100.00	12	11	91.60	94.44
2010-11	02	02	100.00	06	06	100.00	100.00
2011-12	16	15	93.75	02	02	100.00	94.44

27. Diversity of Students

Name of the Course	% of students from the same state	% of students from other States	% of students from abroad
B.A.	100	Nil	Nil
B.Com	100	Nil	Nil
B.Sc.	100	Nil	Nil

28. How many students have cleared national and state competitive examinations such as NET, SLET, GATE, Civil services, Defense services, etc.? : Nil

29. Student progression

Student progression	Against % enrolled
UG to PG	Nil
PG to M.Phil.	Nil
PG to Ph.D.	-
Ph.D. to Post-Doctoral	-
Employed	
• Campus selection	
• Other than campus recruitment	
Entrepreneurship/Self-employment	50

30. Details of Infrastructural facilities

- a) Library : **Common Library**
- b) Internet facilities for Staff & Students : **Available at JKC**
- c) Class rooms with ICT facility : **e-Class**
- d) Laboratories : **N.A**

31. Number of students receiving financial assistance from college, university, government or other agencies :

70 % of students are receiving financial assistance in the form of scholarships under different categories from Government.

32. Details on student enrichment programmes (special lectures / workshops / seminar) with external experts : **Nil**

33. Teaching methods adopted to improve student learning :

Student Participated Teaching methods with Communicative Language Teaching for teaching Hindi to enable the Hindi skills among the students.

34. Participation in Institutional Social Responsibility (ISR) and Extension activities : **NSS**

35. SWOC analysis of the department and Future plans :

Strengths

- Efficient faculty
- Aptitude for organizing cultural activities

Weaknesses

- No departmental library
- Less number of students opting for Hindi

Opportunities

- To promote interest in Hindi, our national Language.
- To provide information about central govt. jobs for students fluent in Hindi.

Challenges

- Students with less exposure to Hindi.

Future plans

- To establish the departmental library
- To try to increase the strength of students opting for Hindi

Evaluative Report of the Department of Mathematics

01. Name of the department : **Department of Mathematics,
Govt. Degree College, Koratla,
Dist. Karimnagar-505326, A.P.**
02. Year of Establishment : **2008-09**
03. Names of Programmes / Courses offered (UG, PG, M.Phil., Ph.D., Integrated Masters; Integrated Ph.D., etc.): **U.G courses**
1. B.Sc.(MPC)T/M (2008-09)
2.B.Sc.(MPCs) E/M (2011-12)
04. Names of Interdisciplinary courses and the departments/units involved
: **N.A.**
05. Annual/ semester/choice based credit system (programme wise) : **Annual**
06. Participation of the department in the courses offered by other departments
: **N.A.**
07. Courses in collaboration with other universities, industries, foreign institutions, etc. : **N.A.**
08. Details of courses/programmes discontinued (if any) with reasons
: **N.A.**
09. Number of Teaching posts

Name of the Post	Sanctioned	Filled
Professors	N.A.	N.A.
Associate Professors	N.A.	N.A.
Asst. Professors	01	01

10. Faculty profile with name, qualification, designation, specialization, (D.Sc./D.Litt. /Ph.D. / M. Phil. etc.,)

Name	Qualification	Designation	Specialization	No. of Years of Experience	No. of Ph.D. Students guided for the last 4 years
Sri. S. Venkateshwar	M.Sc.,	Lecturer in Mathematics	Numerical Analysis	JL 09 yrs Lec. 8 yrs	Nil

11. List of senior visiting faculty : 1. **M. Rajesh, Lecturer in Mathematics, GDC, Godavarikhani, Dist: Karimnagar.**

2. **V. Srinivas, Lecturer in Mathematics, GDC(M), Mancheri. Dist. Adilabad.**

12. Percentage of lectures delivered and practical classes handled (programme wise) by temporary faculty : **Nil**

13. Student -Teacher Ratio (programme wise): **B.Sc. (MPC) 62:1**
B.Sc. (MPCs) 21:1

14. Number of academic support staff (technical) and administrative staff; sanctioned and filled : **Nil**

15. Qualifications of teaching faculty with DSc/ D.Litt/ Ph.D/ MPhil/PG. : **01**

16. Number of faculty with ongoing projects from a) National b) International funding agencies and grants received; : **Nil**

17. Departmental projects funded by DST-FIST; UGC, DBT, ICSSR, etc. and total grants received : **Nil**

18. Research Centre /facility recognized by the University : **Nil**

19. Publications:

* Publication per faculty (Physics Formulae Book, Infinity Calendar): **Nil**

* Number of papers published in peer reviewed journals (national / international) by faculty and students : **Nil**

* Number of publications listed in International Database (For Eg: Web of

- Science, Scopus, Humanities International Complete, Dare Database - International Social Sciences Directory, EBSCO host, etc.) : **Nil**
- * Monographs : **Nil**
 - * Chapter in Books : **Nil**
 - * Books Edited : **Nil**
 - * Books with ISBN/ISSN numbers with details of publishers: **Nil**
 - * Citation Index : **Nil**
 - * SNIP : **Nil**
 - * SJR : **Nil**
 - * Impact factor : -
 - * h-index : -
20. Areas of consultancy and income generated : **Nil**
21. Faculty as members in
- a) National committees : **Nil**
 - b) International Committees : **Nil**
 - c) Editorial Boards.... : **Nil**
22. Student projects
- a) Percentage of students who have done in-house projects including inter departmental/programme : **Nil**
 - b) Percentage of students placed for projects in organizations outside the institution i.e. in Research laboratories/Industry/other agencies : **Nil**
23. Awards/ Recognitions received by faculty and students : **Nil**
24. List of eminent academicians and scientists/ visitors to the department : **Nil**
25. Seminars/ Conferences/Workshops organized & the source of funding
- a)National : **Nil**
 - b)International : **Nil**

26. Student profile programme/course wise:

Name of the Course/programme (refer question no. 4)	Applications received	Selected	Enrolled	
			*M	*F
B.Sc. (MPC) 2008-09	37	29	21	08
B.Sc. (MPC) 2009-10	37	32	13	19
B.Sc. (MPC) 2010-11	56	54	35	19
B.Sc. (MPC) 2011-12	23	12	04	08
B.Sc. (MPC) 2012-13	24	09	04	05
B.Sc. (MPCs) 2011-12	27	19	14	05
B.Sc. (MPCs) 2012-13	10	04	04	00

*M=Male F=Female

Pass percentage year wise

Year	Mathematics Paper-I			Mathematics Paper-II			Mathematics Paper-III			Mathematics Paper-IV			Total %
	Appeared	Passed	%	Appeared	Passed	%	Appeared	Passed	%	Appeared	Passed	%	
2008-09	20	11	55.00	-	-	-	-	-	-	-	-	-	55.00
2009-10	27	18	66.67	20	12	60.00	-	-	-	-	-	-	63.82
2010-11	49	25	51.02	26	13	50.00	20	13	65.00	20	13	65.00	55.65
2011-12	26	16	61.54	42	25	59.52	26	23	88.46	26	24	92.31	73.33

27. Diversity of Students

Name of the Course	% of students from the same state	% of students from other States	% of students from abroad
B.Sc.(MPC T/M)	100	Nil	Nil
B.Sc.(MPCs T/M)	100	Nil	Nil

28. How many students have cleared national and state competitive examinations such as NET, SLET, GATE, Civil services, Defense services, etc. ?

:Nil

28. Student progression

Student progression	Against % enrolled
UG to PG	8%
PG to M.Phil.	-
PG to Ph.D.	-
Ph.D. to Post-Doctoral	-
Employed	10%
<ul style="list-style-type: none"> • Campus selection • Other than campus recruitment 	
Entrepreneurship/Self-employment	20%

30. Details of Infrastructural facilities

- a) Library : **Common Library**
- b) Internet facilities for Staff & Students : **Available at JKC**
- c) Class rooms with ICT facility : -
- d) Laboratories : -

31. Number of students receiving financial assistance from college, university, government or other agencies :

70 % of students are receiving financial assistance in the form of scholarships under different categories from Government.

32. Details on student enrichment programmes (special lectures / workshops / seminar) with external experts : **Two Extension Lectures are arranged**

33. Teaching methods adopted to improve student learning

: **Student Centered Teaching**

34. Participation in Institutional Social Responsibility (ISR) and Extension activities : **Nil**

35. SWOC analysis of the department and Future plans :

Strengths

- Senior faculty to impart the knowledge to the students
- As the number of students is less, the Lecturer can pay the attention to every student and give personal suggestions to improve their performance.

Weakness

- The students who were admitted in the courses are poor in the basics of the subject.

Opportunities

- To develop Arithmetic skills among the rural students
- To develop Analytical skills and reasoning aptitude

Challenge

- It is a great task to motivate students towards the improvement of mathematical skills.

Future plans

- To organize workshop for Mathematics Teachers
- To conduct Mathematics Olympiad at mandal level.

Evaluative Report of the Department of Physics

1. Name of the department : **Department of Physics,
Govt. Degree College, Koratla,
Dist. Karimnagar – 505326, A.P.**
2. Year of Establishment : **2008-09**
3. Names of Programmes / Courses offered (UG, PG, M.Phil., Ph.D., Integrated Masters; Integrated Ph.D., etc.) : **U.G courses
1. B.Sc.(MPC)T/M
2. B.Sc.(MPCs) E/M**
4. Names of Interdisciplinary courses and the departments/units involved : **NA.**
5. Annual/ semester/choice based credit system (programme wise) : **Annual**
6. Participation of the department in the courses offered by other departments : **NA.**
7. Courses in collaboration with other universities, industries, foreign institutions, etc. : **NA.**
8. Details of courses/programmes discontinued (if any) with reasons : **NA.**
9. Number of Teaching posts

Name of the Post	Sanctioned	Filled
Professors	-	-
Associate Professors	-	-
Asst. Professors	01	01

10. Faculty profile with name, qualification, designation, specialization, (D.Sc./D.Litt. /Ph.D. / M. Phil. etc.,)

Name	Qualification	Designation	Specialization	No. of Years of Experience	No. of Ph.D. Students guided for the last 4 years
Sri E. Bhoomesham	M.Sc., B.Ed.,	Lecturer in Physics	Solid State Physics	JL 21 yrs Lec. 7 yrs	Nil

11. List of senior visiting faculty : 1. **P. Nithin, Lecturer in Physics,**
SKNR GDC, Jagtyal, Dist: Karimnagar.

2. **B. Chandra Shekar, Lecturer in Physics,**
SRR GDC, Karimnagar.

3. **Dubba Rajam, Lecturer in Physics,**
Girraj Govt. College, Nizamabad

12. Percentage of lectures delivered and practical classes handled (programme wise) by temporary faculty: **Nil**

13. Student -Teacher Ratio (programme wise): **B.Sc. (MPC) 62:1**
B.Sc. (MPCs) 21:1

14. Number of academic support staff (technical) and administrative staff; sanctioned and filled : **Nil**

15. Qualifications of teaching faculty with DSc/ D.Litt/ Ph.D/ MPhil/PG. : **01**

16. Number of faculty with ongoing projects from a) National b) International funding agencies and grants received; : **Nil**

17. Departmental projects funded by DST-FIST; UGC, DBT, ICSSR, etc. and total grants received : **Nil**

18. Research Centre /facility recognized by the University : **Nil**

19. Publications:

- * Publication per faculty (Physics Formulae Book, Infinity Calendar)
- * Number of papers published in peer reviewed journals (national / international) by faculty and students : **Nil**

- * Number of publications listed in International Database (For Eg: Web of Science, Scopus, Humanities International Complete, Dare Database - International Social Sciences Directory, EBSCO host, etc.) : **Nil**
- * Monographs : **Nil**
- * Chapter in Books : **Nil**
- * Books Edited : **Nil**
- * Books with ISBN/ISSN numbers with details of publishers : **Nil**
- * Citation Index : **Nil**
- * SNIP : **Nil**
- * SJR : **Nil**
- * Impact factor -
- * h-index -
- 20. Areas of consultancy and income generated : **Nil**
- 21. Faculty as members in
 - a) National committees : **Nil**
 - b) International Committees : **Nil**
 - c) Editorial Boards.... : **Nil**
- 22. Student projects
 - a) Percentage of students who have done in-house projects including inter departmental/programme : **12%**
 - b) Percentage of students placed for projects in organizations outside the institution i.e. in Research laboratories/Industry/other agencies : **Nil**
- 23. Awards/ Recognitions received by faculty and students : **Nil**
- 24. List of eminent academicians and scientists/ visitors to the department : **Nil**
- 25. Seminars/ Conferences/Workshops organized & the source of funding
 - a)National : **Nil**
 - b)International : **Nil**

26. Student profile programme/course wise:

Name of the Course/programme (refer question no. 4)	Applications received	Selected	Enrolled	
			*M	*F
B.Sc. (MPC) 2008-09	37	29	21	08
B.Sc. (MPC) 2009-10	37	32	13	19
B.Sc. (MPC) 2010-11	56	54	35	19
B.Sc. (MPC) 2011-12	23	12	04	08
B.Sc. (MPC) 2012-13	24	09	04	05
B.Sc. (MPCs) 2011-12	27	19	14	05
B.Sc. (MPCs) 2012-13	10	04	04	00

*M=Male F=Female

Pass percentage year wise

Year	Physics Paper-I			Physics Paper-II			Physics Paper-III			Physics Paper-IV			Total %
	Appeared	Passed	%	Appeared	Passed	%	Appeared	Passed	%	Appeared	Passed	%	
2008-09	20	11	55.00	-	-	-	-	-	-	-	-	-	55.00
2009-10	27	13	48.15	20	09	45.00	-	-	-	-	-	-	46.80
2010-11	49	26	53.06	26	14	53.85	20	14	70.00	20	16	80.00	60.86
2011-12	26	21	80.77	42	25	59.52	26	22	84.12	26	21	80.77	74.16

27. Diversity of Students

Name of the Course	% of students from the same state	% of students from other States	% of students from abroad
B.Sc.(MPC) T/M	100	Nil	Nil
B.Sc.(MPCs) E/M	100	Nil	Nil

28. How many students have cleared national and state competitive examinations such as NET, SLET, GATE, Civil services, Defense services, etc.? : 02

29. Student progression

Student progression	Against % enrolled
UG to PG	5%
PG to M.Phil.	-
PG to Ph.D.	-
Ph.D. to Post-Doctoral	-
Employed	8%
• Campus selection	
• Other than campus recruitment	
Entrepreneurship/Self-employment	12%

30. Details of Infrastructural facilities

- a) Library : **Common Library**
- b) Internet facilities for Staff & Students : **Available at JKC**
- c) Class rooms with ICT facility : **PPT**
- d) Laboratories : **Physics Laboratory**

31. Number of students receiving financial assistance from college, university, government or other agencies :

70 % of students are receiving financial assistance in the form of scholarships under different categories from Government.

32. Details on student enrichment programmes (special lectures /workshops / seminar) with external experts : **Three Extension Lectures were arranged.**

33. Teaching methods adopted to improve student learning

: Student Centered Teaching

34. Participation in Institutional Social Responsibility (ISR) and Extension activities : **Nil**

35. SWOC analysis of the department and Future plans :

Strengths

- Faculty ripe with experience is an asset
- A well equipped Physics Lab for students to have ample practice.
- Prepared infinitive calendar which is useful for all stakeholders of the society.
- Prepared a book for Physics Formulas.

Weakness

- Many students poor in the basics of the subject.

Opportunities

- There is scope for increased number of seminars and group discussions.
- To develop Analytical skills and reasoning aptitude

Challenge

- Developing the spirit of scientific enquiry is a challenge.

Future plans

- To organize workshop for Physical Science Teachers
- To conduct Seminar on Experimental Skills in Physics for Junior Lecturers at mandal level.

Evaluative Report of the Department of Chemistry

1. Name of the department : **Department of Chemistry,
Govt. Degree College, Koratla,
Dist.Karimnagar-505326, A.P.**
2. Year of Establishment : **2008**
3. Names of Programmes / Courses offered (UG, PG, M.Phil., Ph.D., Integrated Masters; Integrated Ph.D., etc.) : **U.G Course -**
 1. **B.Sc. (MPC) &**
 2. **B.Sc. (B.Z.C) (T/M),**
4. Names of Interdisciplinary courses and the departments/units involved : **N.A.**
5. Annual/ semester/choice based credit system (programme wise) : **Annual**
6. Participation of the department in the courses offered by other departments: **Nil**
7. Courses in collaboration with other universities, industries, foreign institutions, etc. : **N.A.**
8. Details of courses/programmes discontinued (if any) with reasons : **N.A.**
9. Number of Teaching posts

Name of the Post	Sanctioned	Filled
Professors	-	-
Associate Professors	-	-
Asst. Professors	01	01

10. Faculty profile with name, qualification, designation, specialization, (D.Sc./D.Litt. /Ph.D. / M. Phil. etc.,)

Name	Qualification	Designation	Specialization	No. of Years of Experience	No. of Ph.D. Students guided for the last 4 years
1. P. Hariprasad	M.Sc., NET	Lecturer in Chemistry	Core Chemistry	1	-

11. List of senior visiting faculty : **1. N. Vasavi, Lecturer in Chemistry, GDC (W) Jagtial, Dt. Karimnagar.**

12. Percentage of lectures delivered and practical classes handled (programme wise) by temporary faculty : **N.A.**

13. Student -Teacher Ratio (programme wise): **B.Sc. (MPC) 62:1**
B.Sc. (BZC) 50:1

14. Number of academic support staff (technical) and administrative staff; sanctioned and filled : **N.A.**

15. Qualifications of teaching faculty with DSc/ D.Litt/ Ph.D/ MPhil/PG. : **01**

16. Number of faculty with ongoing projects from a) National b) International funding agencies and grants received; : **Nil**

17. Departmental projects funded by DST-FIST; UGC, DBT, ICSSR, etc. and total grants received : **Nil**

18. Research Centre /facility recognized by the University : **N.A.**

19. Publications:

- * Publication per faculty : **Nil**
- * Number of papers published in peer reviewed journals (national / international) by faculty and students : **Nil**
- * Number of publications listed in International Database (For Eg: Web of Science, Scopus, Humanities International Complete, Dare Database - International Social Sciences Directory, EBSCO host, etc.) : **Nil**
- * Monographs : **Nil**

- * Chapter in Books : Nil
- * Books Edited : Nil
- * Books with ISBN/ISSN numbers with details of publishers : Nil
- * Citation Index : Nil
- * SNIP : Nil
- * SJR : Nil
- * Impact factor : -
- * h-index : -

20. Areas of consultancy and income generated : Nil

21. Faculty as members in

- a) National committees : Nil
- b) International Committees : Nil
- c) Editorial Boards.... : Nil

22. Student projects

- a) Percentage of students who have done in-house projects including inter departmental/programme : Nil
- b) Percentage of students placed for projects in organizations outside the institution i.e. in Research laboratories/Industry/other agencies : Nil

23. Awards/ Recognitions received by faculty and students : Nil

24. List of eminent academicians and scientists/ visitors to the department : Nil

25. Seminars/ Conferences/Workshops organized & the source of funding

- a)National : Nil
- b)International : Nil

26. Student profile programme/course wise:

Name of the Course/programme (refer question no. 4)	Applications received	Selected	Enrolled	
			*M	*F
B.Sc. (MPC) 2008-09	37	29	21	08
B.Sc. (MPC) 2009-10	37	32	13	19
B.Sc. (MPC) 2010-11	56	54	35	19
B.Sc. (MPC) 2011-12	23	12	04	08
B.Sc. (MPC) 2012-13	24	09	04	05
B.Sc. (BZC) 2008-09	65	48	33	15
B.Sc. (BZC) 2009-10	48	33	14	19
B.Sc. (BZC) 2010-11	32	25	12	13
B.Sc. (BZC) 2011-12	34	27	10	17
B.Sc. (BZC) 2012-13	14	09	05	04

*M=Male F=Female

Pass percentage year wise

Year	Chemistry Paper-I			Chemistry Paper-II			Chemistry Paper-III			Chemistry Paper-IV			Total %
	Appeared	Passed	%	Appeared	Passed	%	Appeared	Passed	%	Appeared	Passed	%	
2008-09	61	16	26.23	-	-	-	-	-	-	-	-	-	26.23
2009-10	58	23	39.66	57	21	36.84	-	-	-	-	-	-	38.26
2010-11	66	33	50.00	53	24	45.28	53	16	30.19	53	27	50.94	44.44
2011-12	34	15	44.12	56	21	37.50	50	29	58.00	50	28	56.00	48.94

27. Diversity of Students

Name of the Course	% of students from the same state	% of students from other States	% of students from abroad
B.Sc.(MPC)(T/M)	100	Nil	Nil
B.Sc.(BZC)(T/M)	100	Nil	Nil

28. How many students have cleared national and state competitive examinations such as NET, SLET, GATE, Civil services, Defense services, etc.? : Nil

29. Student progression

Student progression	Against % enrolled
UG to PG	5
PG to M.Phil.	-
PG to Ph.D.	-
Ph.D. to Post-Doctoral	-
Employed <ul style="list-style-type: none"> • Campus selection • Other than campus recruitment 	-
Entrepreneurship/Self-employment	50

30. Details of Infrastructural facilities

- a) Library : **Common Library**
b) Internet facilities for Staff & Students : **Available at JKC**
c) Class rooms with ICT facility : **e-Class**
d) Laboratories : **01**

31. Number of students receiving financial assistance from college, university, government or other agencies :

70 % of students are receiving financial assistance in the form of scholarships under different categories from Government.

32. Details on student enrichment programmes (special lectures / workshops / seminar) with external experts : **Nil**

33. Teaching methods adopted to improve student learning :

Lecture Method, Experimental method, Demonstration Method, Discussion Method and Project Work etc.

34. Participation in Institutional Social Responsibility (ISR) and Extension activities : **NSS, Clean and Green, Plantation, Blood Donation Activities.**

35. SWOC analysis of the department and Future plans :

Strengths

- The faculty being an I.I.T Candidate is an advantage to the department.
- A good laboratory with sufficient lab material and instruments is an asset.

Weakness

- The existing faculty is inadequate to meet the workload.

Opportunity

- One day workshops can be hosted for the students of junior colleges in the neighborhood.

Challenge

- Developing the scientific and research aptitude is a big task.

Future Plan

- Establishing a departmental library and acquiring technological support for showing 3D-models are the future plans.

Evaluative Report of the Department of Botany

1. Name of the department : **Department of Botany,
Govt. Degree College, Koratla,
Dist.Karimnagar-505326, A.P.**
2. Year of Establishment : **2008**
3. Names of Programmes / Courses offered (UG, PG, M.Phil., Ph.D., Integrated Masters; Integrated Ph.D., etc.) : **U.G Course - B.Sc. (B.Z.C) (T/M),**
4. Names of Interdisciplinary courses and the departments/units involved
: **N.A.**
5. Annual/ semester/choice based credit system (programme wise) : **Annual**
6. Participation of the department in the courses offered by other departments
: **Nil**
7. Courses in collaboration with other universities, industries, foreign institutions, etc.
: **N.A.**
8. Details of courses/programmes discontinued (if any) with reasons : **N.A.**
9. Number of Teaching posts

Name of the Post	Sanctioned	Filled
Professors	-	-
Associate Professors	-	-
Asst. Professors	01	01

10. Faculty profile with name, qualification, designation, specialization, (D.Sc./D.Litt. /Ph.D. / M. Phil. etc.,)

Name	Qualification	Designation	Specialization	No. of Years of Experience	No. of Ph.D. Students guided for the last 4 years
1. Dr. T. Srinivas	M.Sc., M.Ed., Ph.D	Lecturer in Botany	Mycology & Plant pathology	15	-

11. List of senior visiting faculty : **1. G. Chandraiah, Lecturer in Botany,
SKNR Govt. Degree College, Jagtial.**
12. Percentage of lectures delivered and practical classes handled (programme wise) by temporary faculty : **N.A.**
13. Student -Teacher Ratio (programme wise) : **B.Sc. (BZC) 50 : 1**
14. Number of academic support staff (technical) and administrative staff; sanctioned and filled : **N.A.**
15. Qualifications of teaching faculty with DSc/ D.Litt/ Ph.D/ MPhil/PG. : **01**
16. Number of faculty with ongoing projects from a) National b) International funding agencies and grants received; : **Nil**
17. Departmental projects funded by DST-FIST; UGC, DBT, ICSSR, etc. and total grants received : **Nil**
18. Research Centre /facility recognized by the University : **N.A.**
19. Publications:
 - * Publication per faculty : **Nil**
 - * Number of papers published in peer reviewed journals (national / international) by faculty and students : **Nil**
 - * Number of publications listed in International Database (For Eg: Web of Science, Scopus, Humanities International Complete, Dare Database - International Social Sciences Directory, EBSCO host, etc.) : **Nil**
 - * Monographs : **Nil**
 - * Chapter in Books : **Nil**
 - * Books Edited : **Nil**
 - * Books with ISBN/ISSN numbers with details of publishers : **Nil**
 - * Citation Index : **Nil**
 - * SNIP : **Nil**
 - * SJR : **Nil**
 - * Impact factor : **-**
 - * h-index : **-**

20. Areas of consultancy and income generated : **Nil**
21. Faculty as members in
- a) National committees : **Nil**
 - b) International Committees : **Nil**
 - c) Editorial Boards.... : **Nil**
22. Student projects
- a) Percentage of students who have done in-house projects including inter departmental/programme : **Nil**
 - b) Percentage of students placed for projects in organizations outside the institution i.e. in Research laboratories/Industry/other agencies : **Nil**
23. Awards/ Recognitions received by faculty and students : **Nil**
24. List of eminent academicians and scientists/ visitors to the department : **Nil**
25. Seminars/ Conferences/Workshops organized & the source of funding
- a)National : **Nil**
 - b)International : **Nil**
26. Student profile programme/ course wise:

Name of the Course/programme (refer question no. 4)	Applications received	Selected	Enrolled	
			*M	*F
B.Sc. (BZC) 2008-09	65	48	33	15
B.Sc. (BZC) 2009-10	48	33	14	19
B.Sc. (BZC) 2010-11	32	25	12	13
B.Sc. (BZC) 2011-12	34	27	10	17
B.Sc. (BZC) 2012-13	14	09	05	04

*M=Male F=Female

Pass percentage year wise

Year	Botany Paper-I			Botany Paper-II			Botany Paper-III			Botany Paper-IV			Total %
	Appeared	Passed	%	Appeared	Passed	%	Appeared	Passed	%	Appeared	Passed	%	
2008-09	41	4	09.76	-	-	-	-	-	-	-	-	-	09.76
2009-10	31	7	22.58	37	28	75.68	-	-	-	-	-	-	51.47
2010-11	17	10	58.82	27	13	48.15	33	22	66.67	33	29	87.88	67.27
2011-12	25	20	80.00	14	13	92.36	24	15	62.50	24	19	79.17	77.01

27. Diversity of Students

Name of the Course	% of students from the same state	% of students from other States	% of students from abroad
B.Sc.(BZC)(T/M)	100	Nil	Nil

28. How many students have cleared national and state competitive examinations such as NET, SLET, GATE, Civil services, Defense services, etc.? : **Nil**

29. Student progression

Student progression	Against % enrolled
UG to PG	2 %
PG to M.Phil.	-
PG to Ph.D.	-
Ph.D. to Post-Doctoral	-
Employed	5 %
• Campus selection	
• Other than campus recruitment	
Entrepreneurship/Self-employment	55 %

30. Details of Infrastructural facilities

- a) Library : **Common Library**
- b) Internet facilities for Staff & Students : **Available at JKC**
- c) Class rooms with ICT facility : **e-Class**
- d) Laboratories : **01**

31. Number of students receiving financial assistance from college, university, government or other agencies :

70 % of students are receiving financial assistance in the form of scholarships under different categories from Government.

32. Details on student enrichment programmes (special lectures/workshops/seminar) with external experts : **Field Trips and One Extension Lecture are arranged,**

33. Teaching methods adopted to improve student learning : **Lecture Method, Experimental method, Demonstration Method, Discussion Method and Project Work etc.**

34. Participation in Institutional Social Responsibility (ISR) and Extension activities: **NSS, Clean and Green, Plantation, Blood Donation Activities.**

35. SWOC analysis of the department and Future plans :

Strengths

- **Faculty with laboratory procedural expertise**
- **Spacious and fully furnished laboratory**

Weakness

- **Lack of departmental library for the purpose of reference**

Opportunity

- **Possibility of hosting workshops and one day orientation courses**

Challenge

- **Developing the spirit of scientific enquiry**

Future plan

- **Procuring a few apparatus which would enable the conduct of research experiments**

Evaluative Report of the Department of Zoology

1. Name of the department : **Department of Zoology,
Govt. Degree College, Koratla,
Dist.Karimnagar-505326, A.P.**
2. Year of Establishment : **2008**
3. Names of Programmes / Courses offered (UG, PG, M.Phil., Ph.D., Integrated Masters; Integrated Ph.D., etc.) : **U.G Course - B.Sc. (B.Z.C) (T/M),**
4. Names of Interdisciplinary courses and the departments/units involved : **N.A.**
5. Annual/ semester/choice based credit system (programme wise) : **Annual**
6. Participation of the department in the courses offered by other departments : **Nil**
7. Courses in collaboration with other universities, industries, foreign institutions, etc. : **N.A.**
8. Details of courses/programmes discontinued (if any) with reasons : **N.A.**
9. Number of Teaching posts

Name of the Post	Sanctioned	Filled
Professors	-	-
Associate Professors	-	-
Asst. Professors	01	01

10. Faculty profile with name, qualification, designation, specialization, (D.Sc./D.Litt. /Ph.D. / M. Phil. etc.,)

Name	Qualification	Designation	Specialization	No. of Years of Experience	No. of Ph.D. Students guided for the last 4 years
1. A. Ravi Prasad	M.Sc., M.Ed., NET	Lecturer in Zoology	Entomology	JL 8 Years DL 2 Years	-

11. List of senior visiting faculty : **Nil**
12. Percentage of lectures delivered and practical classes handled (programme wise) by temporary faculty : **N.A.**
13. Student -Teacher Ratio (programme wise) : **B.Sc. (BZC) 50 : 1**
14. Number of academic support staff (technical) and administrative staff; sanctioned and filled : **N.A.**
15. Qualifications of teaching faculty with DSc/ D.Litt/ Ph.D/ MPhil/PG. : **01**
16. Number of faculty with ongoing projects from a) National b) International funding agencies and grants received; : **Nil**
17. Departmental projects funded by DST-FIST; UGC, DBT, ICSSR, etc. and total grants received : **Nil**
18. Research Centre /facility recognized by the University : **N.A.**
19. Publications:
 - * Publication per faculty : **Nil**
 - * Number of papers published in peer reviewed journals (national / international) by faculty and students : **Nil**
 - * Number of publications listed in International Database (For Eg: Web of Science, Scopus, Humanities International Complete, Dare Database - International Social Sciences Directory, EBSCO host, etc.) : **Nil**
 - * Monographs : **Nil**
 - * Chapter in Books : **Nil**
 - * Books Edited : **Nil**
 - * Books with ISBN/ISSN numbers with details of publishers : **Nil**
 - * Citation Index : **Nil**
 - * SNIP : **Nil**
 - * SJR : **Nil**
 - * Impact factor : **-**
 - * h-index : **-**

20. Areas of consultancy and income generated : **Nil**
21. Faculty as members in
- a) National committees : **Nil**
- b) International Committees : **Nil**
- c) Editorial Boards.... : **Nil**
22. Student projects
- a) Percentage of students who have done in-house projects including inter departmental/programme : **Nil**
- b) Percentage of students placed for projects in organizations outside the institution i.e. in Research laboratories/Industry/other agencies : **Nil**
23. Awards/ Recognitions received by faculty and students : **Nil**
24. List of eminent academicians and scientists/ visitors to the department : **Nil**
25. Seminars/ Conferences/Workshops organized & the source of funding
- a)National : **Nil**
- b)International : **Nil**
26. Student profile programme/course wise:

Name of the Course/programme (refer question no. 4)	Applications received	Selected	Enrolled	
			*M	*F
B.Sc. (BZC) 2008-09	65	48	33	15
B.Sc. (BZC) 2009-10	48	33	14	19
B.Sc. (BZC) 2010-11	32	25	12	13
B.Sc. (BZC) 2011-12	34	27	10	17
B.Sc. (BZC) 2012-13	14	09	05	04

*M=Male F=Female

Pass percentage year wise

Year	Zoology Paper-I			Zoology Paper-II			Zoology Paper-III			Zoology Paper-IV			Total %
	Appeared	Passed	%	Appeared	Passed	%	Appeared	Passed	%	Appeared	Passed	%	
2008-09	41	14	34.15	-	-	-	-	-	-	-	-	-	34.15
2009-10	31	06	19.35	36	26	72.22	-	-	-	-	-	-	47.76
2010-11	17	11	64.71	27	13	56.52	33	27	82.00	33	28	84.84	68.57
2011-12	25	11	44.00	14	14	100.00	24	17	70.83	24	20	83.33	71.26

27. Diversity of Students

Name of the Course	% of students from the same state	% of students from other States	% of students from abroad
B.Sc.(BZC)(T/M)	100	Nil	Nil

28. How many students have cleared national and state competitive examinations such as NET, SLET, GATE, Civil services, Defense services, etc.

? : Nil

29. Student progression

Student progression	Against % enrolled
UG to PG	4
PG to M.Phil.	-
PG to Ph.D.	-
Ph.D. to Post-Doctoral	-
Employed	-
• Campus selection	
• Other than campus recruitment	
Entrepreneurship/Self-employment	45

30. Details of Infrastructural facilities

- a) Library : **Common Library**
- b) Internet facilities for Staff & Students : **Available at JKC**
- c) Class rooms with ICT facility : **e-Class**
- d) Laboratories : **01**

31. Number of students receiving financial assistance from college, university, government or other agencies :

70 % of students are receiving financial assistance in the form of scholarships under different categories from Government.

32. Details on student enrichment programmes (special lectures / workshops / seminar) with external experts : **Nil**

33. Teaching methods adopted to improve student learning :

Lecture Method, Experimental method, Demonstration Method, Discussion Method, Quiz, Group Discussion etc.

34. Participation in Institutional Social Responsibility (ISR) and Extension activities : **NSS, Clean and Green, Plantation, Blood Donation Activities.**

35. SWOC analysis of the department and Future plans :

Strengths

- **Spacious laboratory with good equipment is strength.**

Weakness

- **Lack of departmental library is a weakness.**
- **There are no facilities to do major experiments.**

Opportunity

- **One day workshops and seminars can be organized.**

Challenge

- **Developing scientific outlook among the students**

Future plan

- **Encouraging the project work and research work is the future plan of the department.**

Evaluative Report of the Department of Economics

1. Name of the department : **Department of Economics,
Govt. Degree College, Koratla,
Dist. Karimnagar –505326, A.P.**
2. Year of Establishment : **1981**
3. Names of Programmes / Courses offered (UG, PG, M.Phil., Ph.D., Integrated Masters; Integrated Ph.D., etc.) : **U.G Course - B.A. (HEP) (T/M & U/M),**
4. Names of Interdisciplinary courses and the departments/units involved : **N.A.**
5. Annual/ semester/choice based credit system (programme wise) : **Annual**
6. Participation of the department in the courses offered by other departments : **N.A.**
7. Courses in collaboration with other universities, industries, foreign institutions, etc. : **N.A.**
8. Details of courses/programmes discontinued (if any) with reasons: **N.A.**
9. Number of Teaching posts

Name of the Post	Sanctioned	Filled
Professors	-	-
Associate Professors	-	-
Asst. Professors	03	03

10. Faculty profile with name, qualification, designation, specialization, (D.Sc./D.Litt. /Ph.D. / M. Phil. Etc.,)

Name	Qualification	Designation	Specialization	No. of Years of Experience	No. of Ph.D. Students guided for the last 4 years
1. Dr. A. Venkata Ramana	M.A., M.Sc., M.Ed., Ph.D, SLET	Lecturer in Economics	Agricultural Economics	JL 08 DL 02	-
2. K. Venkaiah	M.A., B.Ed., SLET	Lecturer in Economics	-	20 (PTL)	-
3. Syeda Talath Fathima	M.A., B.Ed.,	Lecturer in Economics	-	01	-

11. List of senior visiting faculty : 1. **Dr. V. Vara Prasad, Asst. Professor,**

Satavahana University, Karimnagar.

2. Dr. S. Manohara Chary, Lecturer,

SRR Degree & PG College, Karimnagar

3. Dr. M. Ravinder, Lecturer

GDC, Chennoor, Adilabad.

12. Percentage of lectures delivered and practical classes handled (programme wise) by temporary faculty : **N.A.**

13. Student -Teacher Ratio (programme wise) : **B.A. (HEP) (T/M) 166 : 1**

B.A. (HEP) (U/M) 147 : 1

14. Number of academic support staff (technical) and administrative staff; sanctioned and filled : **N.A.**

15. Qualifications of teaching faculty with DSc/ D.Litt/ Ph.D/ MPhil/PG : **03**

16. Number of faculty with ongoing projects from a) National b) International funding agencies and grants received; : **Nil**

17. Departmental projects funded by DST-FIST; UGC, DBT, ICSSR, etc. and total grants received : **Nil**

18. Research Centre /facility recognized by the University : **N.A.**

19. Publications:

- * Publication per faculty : Nil
- * Number of papers published in peer reviewed journals (national / international) by faculty and students : Nil
- * Number of publications listed in International Database (For Eg: Web of Science, Scopus, Humanities International Complete, Dare Database - International Social Sciences Directory, EBSCO host, etc.) : Nil
- * Monographs : Nil
- * Chapter in Books : Nil
- * Books Edited : Nil
- * Books with ISBN/ISSN numbers with details of publishers : Nil
- * Citation Index : Nil
- * SNIP : Nil
- * SJR : Nil
- * Impact factor : -
- * h-index : -

20. Areas of consultancy and income generated : Nil

21. Faculty as members in

- a) National committees : Nil
- b) International Committees : Nil
- c) Editorial Boards.... : Nil

22. Student projects

- a) Percentage of students who have done in-house projects including inter departmental/programme : Nil
- b) Percentage of students placed for projects in organizations outside the institution i.e. in Research laboratories/Industry/other agencies : Nil

23. Awards/ Recognitions received by faculty and students : Nil

24. List of eminent academicians and scientists/ visitors to the department : Nil

25. Seminars/ Conferences/Workshops organized & the source of funding

a)National : Nil

b)International : Nil

26. Student profile programme/course wise:

Name of the Course/programme (refer question no. 4)	Applications received	Selected	Enrolled	
			*M	*F
B.A (T.M) 2008-09	134	103	57	46
B.A (U.M) 2008-09	52	49	22	27
B.A (T.M) 2009-10	101	83	47	36
B.A (U.M) 2009-10	84	65	38	27
B.A (T.M) 2010-11	112	104	61	43
B.A (U.M) 2010-11	74	68	23	45
B.A (T.M) 2011-12	82	66	50	16
B.A (U.M) 2011-12	56	49	19	30
B.A (T.M) 2012-13	51	45	26	19
B.A (U.M) 2012-13	66	53	20	33

*M=Male F=Female

Pass percentage year wise (Telugu Medium)

Year	Economics Paper-I			Economics Paper-II			Economics Paper-III			Economics Paper-IV			Total %
	Appeared	Passed	%	Appeared	Passed	%	Appeared	Passed	%	Appeared	Passed	%	
2008-09	93	40	43.01	110	73	66.36	96	91	94.79	97	92	94.85	74.74
2009-10	71	23	32.39	91	57	62.64	111	94	84.68	111	101	90.99	71.61
2010-11	86	31	36.05	58	31	53.45	83	70	84.34	83	66	79.52	63.87
2011-12	56	28	50.00	64	45	70.31	51	43	84.31	51	39	76.47	69.82

Pass percentage year wise (Urdu Medium)

Year	Economics Paper-I			Economics Paper-II			Economics Paper-III			Economics Paper-IV			Total %
	Appeared	Passed	%	Appeared	Passed	%	Appeared	Passed	%	Appeared	Passed	%	
2008-09	44	33	75.00	42	37	88.10	34	28	82.35	35	31	88.57	83.22
2009-10	57	48	84.21	36	35	97.22	41	37	90.24	41	40	97.56	91.42
2010-11	62	45	72.58	50	44	88.00	30	26	86.67	30	28	93.33	83.13
2011-12	49	46	93.88	44	38	86.36	45	44	97.78	45	44	97.78	93.98

27. Diversity of Students

Name of the Course	% of students from the same state	% of students from other States	% of students from abroad
B.A.(T/M)	100	Nil	Nil
B.A.(U/M)	100	Nil	Nil

28. How many students have cleared national and state competitive examinations such as NET, SLET, GATE, Civil services, Defense services, etc.? : 13

29. Student progression

Student progression	Against % enrolled
UG to PG	12
PG to M.Phil.	2
PG to Ph.D.	1.5
Ph.D. to Post-Doctoral	-
Employed	14
• Campus selection	
• Other than campus recruitment	
Entrepreneurship/Self-employment	43

30. Details of Infrastructural facilities

- | | |
|---|---------------------------|
| a) Library | : Common Library |
| b) Internet facilities for Staff & Students | : Available at JKC |
| c) Class rooms with ICT facility | : e-Class |
| d) Laboratories | : N.A |

31. Number of students receiving financial assistance from college, university, government or other agencies :

70 % of students are receiving financial assistance in the form of scholarships under different categories from Government.

32. Details on student enrichment programmes (special lectures / workshops / seminar) with external experts : **Nil**

33. Teaching methods adopted to improve student learning :

Lecture Method and Student Centered teaching methods like Group Discussion, Student Seminar, Quiz, Brain Storming and Project Work etc.

34. Participation in Institutional Social Responsibility (ISR) and Extension activities : **NSS and Literacy improvement Project**

35. SWOC analysis of the department and Future plans :

Strengths

- **The Department of Economics has the faculty who feels the concern for students like a friend, guide and the philosopher.**
- **They actively participate in the seminars out side and conduct co-curricular activities in the class room like student seminars, group discussions, buzz sessions, quiz etc.**

Weakness

- **Departmental Library facility is not there**

Opportunity

- An attitude of economic perception in daily life can be developed among the students.

Challenge

- Students coming from qualifying courses that does not have Economics have no prior knowledge of subject

Future Plan

- To establish a Departmental Library with Reference Books, Journals, Research papers etc. to inculcate the research aptitude among the students
- To start a new Post Graduate Programme in Economics
- To open a coaching centre for the students who appear for PG Entrance Tests.

Evaluative Report of the Department of History

1. Name of the department : **Department of History,
Govt. Degree College, Koratla,
Dist.Karimnagar-505326, A.P.**
2. Year of Establishment : **1981**
3. Names of Programmes / Courses offered (UG, PG, M.Phil., Ph.D., Integrated Masters; Integrated Ph.D., etc.) : **U.G Course - B.A. (HEP) (T/M & U/M),**
4. Names of Interdisciplinary courses and the departments/units involved : **N.A.**
5. Annual/ semester/choice based credit system (programme wise) : **Annual**
6. Participation of the department in the courses offered by other departments : **N.A.**
7. Courses in collaboration with other universities, industries, foreign institutions, etc. : **N.A.**
8. Details of courses/programmes discontinued (if any) with reasons : **N.A.**
9. Number of Teaching posts

Name of the Post	Sanctioned	Filled
Professors	-	-
Associate Professors	-	-
Asst. Professors	02	01

10. Faculty profile with name, qualification, designation, specialization, (D.Sc./D.Litt. /Ph.D. / M. Phil. etc.,)

Name	Qualification	Designation	Specialization	No. of Years of Experience	No. of Ph.D. Students guided for the last 4 years
1. S. Srinivas	M.A., B.Ed.,	Lecturer in History	-	10	-

11. List of senior visiting faculty : **Nil**
12. Percentage of lectures delivered and practical classes handled (programme wise) by temporary faculty : **N.A.**
13. Student -Teacher Ratio (programme wise): **B.A. (HEP) (T/M) 166 : 1**
14. Number of academic support staff (technical) and administrative staff; sanctioned and filled : **N.A.**
15. Qualifications of teaching faculty with DSc/ D.Litt/ Ph.D/ MPhil/PG. : **01**
16. Number of faculty with ongoing projects from a) National b) International funding agencies and grants received; : **Nil**
17. Departmental projects funded by DST-FIST; UGC, DBT, ICSSR, etc. and total grants received : **Nil**
18. Research Centre /facility recognized by the University : **N.A.**
19. Publications:
 - * Publication per faculty : **Nil**
 - * Number of papers published in peer reviewed journals (national / international) by faculty and students : **Nil**
 - * Number of publications listed in International Database (For Eg: Web of Science, Scopus, Humanities International Complete, Dare Database - International Social Sciences Directory, EBSCO host, etc.) : **Nil**
 - * Monographs : **Nil**
 - * Chapter in Books : **Nil**
 - * Books Edited : **Nil**
 - * Books with ISBN/ISSN numbers with details of publishers : **Nil**
 - * Citation Index : **Nil**
 - * SNIP : **Nil**
 - * SJR : **Nil**
 - * Impact factor : **-**
 - * h-index : **-**

20. Areas of consultancy and income generated : Nil
21. Faculty as members in
- a) National committees : Nil
 - b) International Committees : Nil
 - c) Editorial Boards.... : Nil
22. Student projects
- a) Percentage of students who have done in-house projects including inter departmental/ programme : Nil
 - b) Percentage of students placed for projects in organizations outside the institution i.e. in Research laboratories/Industry/other agencies : Nil
23. Awards/ Recognitions received by faculty and students : Nil
24. List of eminent academicians and scientists/ visitors to the department : Nil
25. Seminars/ Conferences/Workshops organized & the source of funding
- a)National : Nil
 - b)International : Nil
26. Student profile programme/ course wise:

Name of the Course/programme (refer question no. 4)	Applications received	Selected	Enrolled	
			*M	*F
B.A (T.M) 2008-09	134	103	57	46
B.A (U.M) 2008-09	52	49	22	27
B.A (T.M) 2009-10	101	83	47	36
B.A (U.M) 2009-10	84	65	38	27
B.A (T.M) 2010-11	112	104	61	43
B.A (U.M) 2010-11	74	68	23	45
B.A (T.M) 2011-12	82	66	50	16
B.A (U.M) 2011-12	56	49	19	30
B.A (T.M) 2012-13	51	45	26	19
B.A (U.M) 2012-13	66	53	20	33

*M=Male F=Female

Pass percentage year wise (Telugu Medium)

Year	History Paper-I			History Paper-II			History Paper-III			History Paper-IV			Total %
	Appeared	Passed	%	Appeared	Passed	%	Appeared	Passed	%	Appeared	Passed	%	
2008-09	92	69	75.00	112	105	93.75	97	59	60.82	96	78	81.25	78.33
2009-10	71	38	53.52	91	76	83.52	111	93	83.78	111	99	89.19	79.68
2010-11	86	47	54.65	58	22	37.93	83	60	72.29	83	65	78.31	62.58
2011-12	56	42	75.00	64	55	85.94	51	45	88.24	51	38	74.51	81.08

Pass percentage year wise (Urdu Medium)

Year	History Paper-I			History Paper-II			History Paper-III			History Paper-IV			Total %
	Appeared	Passed	%	Appeared	Passed	%	Appeared	Passed	%	Appeared	Passed	%	
2008-09	41	33	80.49	42	36	85.71	35	32	91.43	35	33	94.29	87.58
2009-10	57	51	89.47	36	35	97.22	41	39	95.12	41	39	95.12	93.71
2010-11	62	49	79.03	50	46	92.00	30	23	76.67	30	29	96.67	85.46
2011-12	49	44	89.80	44	39	88.64	45	45	100.00	45	44	97.78	93.98

27. Diversity of Students

Name of the Course	% of students from the same state	% of students from other States	% of students from abroad
B.A.(T/M)	100	Nil	Nil
B.A.(U/M)	100	Nil	Nil

28. How many students have cleared national and state competitive examinations such as NET, SLET, GATE, Civil services, Defense services, etc.? : Nil

28. Student progression

Student progression	Against % enrolled
UG to PG	4
PG to M.Phil.	-
PG to Ph.D.	-
Ph.D. to Post-Doctoral	-
Employed	-
<ul style="list-style-type: none"> • Campus selection • Other than campus recruitment 	
Entrepreneurship/Self-employment	60

30. Details of Infrastructural facilities

- a) Library : **Common Library**
- b) Internet facilities for Staff & Students : **Available at JKC**
- c) Class rooms with ICT facility : **e-Class**
- d) Laboratories : **N.A**

31. Number of students receiving financial assistance from college, university, government or other agencies :

70 % of students are receiving financial assistance in the form of scholarships under different categories from Government.

32. Details on student enrichment programmes (special lectures / workshops / seminar) with external experts : **Nil**

33. Teaching methods adopted to improve student learning :

Lecture Method and Student Centered teaching methods like Group Discussion, Student Seminar, Quiz, Brain Storming and Project Work etc.

34. Participation in Institutional Social Responsibility (ISR) and Extension activities : **NSS and Literacy improvement Project**

35. SWOC analysis of the department and Future plans :

Strength

- Availability of excellent faculty

Weakness

- Lack of faculty for Urdu Medium students

Opportunity

- Scope for Historical Tour as the Karimnagar District was ruled by ancient Satavahanas, Kakatiyas, Qutub Shahis and Nizams and so has many historical places.
- To develop historical inquisitiveness among the students

Challenges

- Majority students with non-history back ground at +2 level

Future plans

- To establish Departmental Library
- To establish a museum historical articles etc.

Evaluative Report of the Department of Political Science

1. Name of the department : **Department of Political Science,
Govt. Degree College, Koratla,
Dist.Karimnagar-505326, A.P.**
2. Year of Establishment : **1981**
3. Names of Programmes / Courses offered (UG, PG, M.Phil., Ph.D., Integrated Masters; Integrated Ph.D., etc.) : **U.G Course - B.A. (HEP) (T/M & U/M),**
4. Names of Interdisciplinary courses and the departments/units involved : **N.A.**
5. Annual/ semester/choice based credit system (programme wise) : **Annual**
6. Participation of the department in the courses offered by other departments : **N.A.**
7. Courses in collaboration with other universities, industries, foreign institutions, etc. : **N.A.**
8. Details of courses/programmes discontinued (if any) with reasons : **N.A.**
9. Number of Teaching posts

Name of the Post	sanctioned	Filled
Professors	-	-
Associate Professors	-	-
Asst. Professors	02	01

10. Faculty profile with name, qualification, designation, specialization, (D.Sc./D.Litt. /Ph.D. / M. Phil. etc.,)

Name	Qualification	Designation	Specialization	No. of Years of Experience	No. of Ph.D. Students guided for the last 4 years
1. G. Madhu Sudhan Reddy	M.A., M.Phil., B.Ed.,	Lecturer in Political Science,	International Relations	08	-

11. List of senior visiting faculty: **1.A. Radhakishan, Lecturer in Political Science**
SKNR GDC, Jagtial, Dt. Karimnagar.
2. Dr. A. Ramesh, Lecturer in Political Science,
GDC Metpally, Dt. Karimnagar.
12. Percentage of lectures delivered and practical classes handled (programme wise) by temporary faculty : **N.A.**
13. Student -Teacher Ratio (programme wise) : **B.A. (HEP) (T/M) 166 : 1**
14. Number of academic support staff (technical) and administrative staff; sanctioned and filled : **N.A.**
15. Qualifications of teaching faculty with DSc/ D.Litt/ Ph.D/ MPhil/PG. : **01**
16. Number of faculty with ongoing projects from a) National b) International funding agencies and grants received; : **Nil**
17. Departmental projects funded by DST-FIST; UGC, DBT, ICSSR, etc. and total grants received : **Nil**
18. Research Centre /facility recognized by the University : **N.A.**
19. Publications:
- * Publication per faculty : **Nil**
 - * Number of papers published in peer reviewed journals (national / international) by faculty and students : **Nil**
 - * Number of publications listed in International Database (For Eg: Web of Science, Scopus, Humanities International Complete, Dare Database - International Social Sciences Directory, EBSCO host, etc.) : **Nil**
 - * Monographs : **Nil**
 - * Chapter in Books : **Nil**
 - * Books Edited : **Nil**
 - * Books with ISBN/ISSN numbers with details of publishers : **Nil**
 - * Citation Index : **Nil**
 - * SNIP : **Nil**
 - * SJR : **Nil**

- * Impact factor : -
- * h-index : -
20. Areas of consultancy and income generated : **Nil**
21. Faculty as members in
- a) National committees : **Nil**
- b) International Committees : **Nil**
- c) Editorial Boards.... : **Nil**
22. Student projects
- a) Percentage of students who have done in-house projects including inter departmental/programme : **Nil**
- b) Percentage of students placed for projects in organizations outside the institution i.e. in Research laboratories/Industry/other agencies : **Nil**
23. Awards/ Recognitions received by faculty and students : **Nil**
24. List of eminent academicians and scientists/ visitors to the department : **Nil**
25. Seminars/ Conferences/Workshops organized & the source of funding
- a)National : **Nil**
- b)International : **Nil**
26. Student profile programme/course wise:

Name of the Course/programme (refer question no. 4)	Applications received	Selected	Enrolled	
			*M	*F
B.A (T.M) 2008-09	134	103	57	46
B.A (U.M) 2008-09	52	49	22	27
B.A (T.M) 2009-10	101	83	47	36
B.A (U.M) 2009-10	84	65	38	27
B.A (T.M) 2010-11	112	104	61	43
B.A (U.M) 2010-11	74	68	23	45
B.A (T.M) 2011-12	82	66	50	16
B.A (U.M) 2011-12	56	49	19	30
B.A (T.M) 2012-13	51	45	26	19
B.A (U.M) 2012-13	66	53	20	33

*M=Male F=Female

Pass percentage year wise (Telugu Medium)

Year	Political Science Paper-I			Political Science Paper-II			Political Science Paper-III			Political Science Paper-IV			Total %
	Appeared	Passed	%	Appeared	Passed	%	Appeared	Passed	%	Appeared	Passed	%	
2008-09	92	59	64.13	111	94	84.68	98	87	88.78	97	79	81.44	80.15
2009-10	71	30	42.25	91	85	93.41	111	103	92.79	111	94	84.68	81.25
2010-11	86	48	55.81	58	43	74.14	83	72	86.75	83	74	89.16	76.45
2011-12	56	45	80.36	64	57	89.06	51	42	82.35	51	42	82.35	83.78

Pass percentage year wise (Urdu Medium)

Year	Political Science Paper-I			Political Science Paper-II			Political Science Paper-III			Political Science Paper-IV			Total %
	Appeared	Passed	%	Appeared	Passed	%	Appeared	Passed	%	Appeared	Passed	%	
2008-09	44	22	50.00	42	29	69.05	98	87	88.78	97	79	81.44	77.22
2009-10	57	28	49.12	36	23	63.89	41	35	85.37	41	28	68.29	65.14
2010-11	62	54	87.10	50	36	72.00	30	28	93.33	30	22	73.33	81.39
2011-12	49	45	91.84	44	35	79.55	45	44	97.78	45	43	95.56	91.25

27. Diversity of Students

Name of the Course	% of students from the same state	% of students from other States	% of students from abroad
B.A.(T/M)	100	Nil	Nil
B.A.(U/M)	100	Nil	Nil

28. How many students have cleared national and state competitive examinations such as NET, SLET, GATE, Civil services, Defense services, etc.?
: Nil

29. Student progression

Student progression	Against % enrolled
UG to PG	5
PG to M.Phil.	-
PG to Ph.D.	-
Ph.D. to Post-Doctoral	-
Employed	-
<ul style="list-style-type: none"> • Campus selection • Other than campus recruitment 	
Entrepreneurship/Self-employment	60

30. Details of Infrastructural facilities

- a) Library : **Common Library**
- b) Internet facilities for Staff & Students : **Available at JKC**
- c) Class rooms with ICT facility : **e-Class**
- d) Laboratories : **N.A**

31. Number of students receiving financial assistance from college, university, government or other agencies :

70 % of students are receiving financial assistance in the form of scholarships under different categories from Government.

32. Details on student enrichment programmes (special lectures / workshops / seminar) with external experts : **Nil**

33. Teaching methods adopted to improve student learning :

Lecture Method and Student Centered teaching methods like Group Discussion, Student Seminar, Quiz, Brain Storming and Project Work etc.

34. Participation in Institutional Social Responsibility (ISR) and Extension activities : **NSS and Literacy improvement Project**

35. SWOC analysis of the department and Future plans :

Strength

- Faculty with good experience

Weakness

- No faculty for Urdu Medium students

Opportunity

- To develop political awareness and leadership qualities

Challenges

- Students with no back ground knowledge of Political science

Future plans

- To acquire the departmental library

Evaluative Report of the Department of Commerce

1. Name of the department : **Department of Commerce,
Govt. Degree College, Koratla,
Dist. Karimnagar-505326, A.P.**
2. Year of Establishment : **1981**
3. Names of Programmes / Courses offered (UG, PG, M.Phil., Ph.D., Integrated Masters; Integrated Ph.D., etc.) : **U.G Course -
B.Com (General) (T/M) – 1981-82
B.Com (Comp. Appl.) (E/M), 2001-02**
4. Names of Interdisciplinary courses and the departments/units involved : **N.A.**
5. Annual/ semester/ choice based credit system (programme wise) : **Annual**
6. Participation of the department in the courses offered by other departments : **N.A.**
7. Courses in collaboration with other universities, industries, foreign institutions, etc. : **N.A.**
8. Details of courses/programmes discontinued (if any) with reasons: **N.A.**
9. Number of Teaching posts

Name of the Post	Sanctioned	Filled
Professors	-	-
Associate Professors	-	-
Asst. Professors	03	03

10. Faculty profile with name, qualification, designation, specialization, (D.Sc./D.Litt. /Ph.D. / M. Phil. etc.,)

Name	Qualification	Designation	Specialization	No. of Years of Experience	No. of Ph.D. Students guided for the last 4 years
1. S. Ashok	M.Com, M.Phil.,	Lecturer in Commerce	Advanced Accounting	JL 10 DL 07	-
2. M. Kishan	M.Com, M.Phil.,	Lecturer in Commerce	Costing	JL 07 DL 07	-
3. V. Ramesh	M.Com, B.Ed.,	Lecturer in Commerce	Accounting	08	-

11. List of senior visiting faculty : **1. G.Shanker, Lecturer in Commerce, GDC(W) Karimnagar.**

2. P. Ravinder, Lecturer in Commerce, GDC(W) Jagtial.

12. Percentage of lectures delivered and practical classes handled (programme wise) by temporary faculty : **33 %**

13. Student -Teacher Ratio (programme wise) : **B.Com (Gen) 39 :1**
B.Com (CA) 60 :1

14. Number of academic support staff (technical) and administrative staff; sanctioned and filled : **N.A.**

15. Qualifications of teaching faculty with DSc/ D.Litt/ Ph.D/ MPhil/PG. : **03**

16. Number of faculty with ongoing projects from a) National b) International funding agencies and grants received; : **Nil**

17. Departmental projects funded by DST-FIST; UGC, DBT, ICSSR, etc. and total grants received : **Nil**

18. Research Centre /facility recognized by the University : **N.A.**

19. Publications:

* Publication per faculty : **Nil**

* Number of papers published in peer reviewed journals (national /

- international) by faculty and students : Nil
- * Number of publications listed in International Database (For Eg: Web of Science, Scopus, Humanities International Complete, Dare Database - International Social Sciences Directory, EBSCO host, etc.) : Nil
 - * Monographs : Nil
 - * Chapter in Books : Nil
 - * Books Edited : Nil
 - * Books with ISBN/ISSN numbers with details of publishers : Nil
 - * Citation Index : Nil
 - * SNIP : Nil
 - * SJR : Nil
 - * Impact factor : -
 - * h-index : -
20. Areas of consultancy and income generated : Nil
21. Faculty as members in
- a) National committees : Nil
 - b) International Committees : Nil
 - c) Editorial Boards.... : Nil
22. Student projects
- a) Percentage of students who have done in-house projects including inter departmental/programme : Nil
 - b) Percentage of students placed for projects in organizations outside the institution i.e. in Research laboratories/Industry/other agencies : Nil
23. Awards/ Recognitions received by faculty and students : Nil
24. List of eminent academicians and scientists/ visitors to the department : Nil
25. Seminars/ Conferences/Workshops organized & the source of funding
- a) National : Nil
 - b) International : Nil

26. Student profile programme/course wise:

Name of the Course/programme (refer question no. 4)	Applications received	Selected	Enrolled	
			*M	*F
B.Com (Gen) 2008-09	103	71	61	10
B.Com (CA) 2008-09	78	48	38	10
B.Com (Gen) 2009-10	83	52	36	16
B.Com (CA) 2009-10	105	55	43	12
B.Com (Gen) 2010-11	71	68	52	16
B.Com (CA) 2010-11	65	60	40	20
B.Com (Gen) 2011-12	68	63	44	19
B.Com (CA) 2011-12	54	47	38	09
B.Com (Gen) 2012-13	33	28	17	11
B.Com (CA) 2012-13	46	37	23	14

*M=Male F=Female

Pass percentage year wise (Telugu Medium)

Year	B.Com (General) – I Year			B.Com (General)– II Year			B.Com(General)– III Year			Total %
	Appeared	Passed	%	Appeared	Passed	%	Appeared	Passed	%	
2008-09	64	23	35.94	48	10	20.83	49	28	57.14	37.88
2009-10	46	10	21.74	57	24	42.11	41	19	46.34	36.80
2010-11	54	05	09.26	30	18	60.00	50	38	76.00	45.52
2011-12	47	14	29.79	42	16	38.10	24	19	79.17	36.56

Pass percentage year wise (English Medium)

Year	B.Com (Comp.. Appl.)– I Year			B.Com (Comp.. Appl.)– II Year			B.Com(Comp.. Appl.)– III Year			Total %
	Appeared	Passed	%	Appeared	Passed	%	Appeared	Passed	%	
2008-09	40	09	22.50	21	11	52.38	27	13	48.15	37.50
2009-10	48	24	50.00	31	12	38.71	21	18	85.71	54.00
2010-11	50	13	26.00	43	24	55.81	29	15	51.72	42.62
2011-12	42	21	50.00	39	25	64.10	40	24	60.00	57.85

27. Diversity of Students

Name of the Course	% of students from the same state	% of students from other States	% of students from abroad
B.Com (Gen)	100	Nil	Nil
B.Com (CA)	100	Nil	Nil

28. How many students have cleared national and state competitive examinations such as NET, SLET, GATE, Civil services, Defense services, etc.? : **26**

29. Student progression

Student progression	Against % enrolled
UG to PG	21%
PG to M.Phil.	10%
PG to Ph.D.	0.5%
Ph.D. to Post-Doctoral	-
Employed	10 %
<ul style="list-style-type: none"> Campus selection Other than campus recruitment 	
Entrepreneurship/Self-employment	60 %

30. Details of Infrastructural facilities

- a) Library : **Common Library**
- b) Internet facilities for Staff & Students : **Available at JKC**

- c) Class rooms with ICT facility : **e-Class**
- d) Laboratories : **N.A**
31. Number of students receiving financial assistance from college, university, government or other agencies :
70 % of students are receiving financial assistance in the form of scholarships under different categories from Government.
32. Details on student enrichment programmes (special lectures / workshops / seminar) with external experts : **Two Extension Lectures are arranged**
33. Teaching methods adopted to improve student learning : **Lecture Method and Student Centered teaching methods.**
34. Participation in Institutional Social Responsibility (ISR) and Extension activities : **NSS**
35. SWOC analysis of the department and Future plans :

Strengths

- **Efficient Lecturers who have teaching experience of more than 15 years.**
- **Potential for good feeder strength**

Weakness

- **Lack of commerce laboratory**
- **Lack of Departmental Library Opportunities**

Opportunities

- **Employment opportunities in private sector for the students**

Challenges

- **Inability to keep pace with modern changes like mechanization and computerization of accounting**

Future plans

- **To establish a commerce lab with computer equipments, accounting packages**
- **To start add-on course in Tax Return Preparer Course conducted by CBDT**

Evaluative Report of the Department of Computer Science & Applications

1. Name of the department : **Department of Computer Science & Applications,
Govt. Degree College, Koratla,
Dist. Karimnagar-505326, A.P.**
2. Year of Establishment : **2001-02**
3. Names of Programmes / Courses offered (UG, PG, M.Phil., Ph.D., Integrated Masters; Integrated Ph.D., etc.) : **U.G Course –
1. B.Com (Comp. Appl.) (E/M), 2001-02
2. B.Sc (Comp. Science) (E/M), 2011-12**
4. Names of Interdisciplinary courses and the departments/units involved : **N.A.**
5. Annual/ semester/choice based credit system (programme wise) : **Annual**
6. Participation of the department in the courses offered by other departments : **N.A.**
7. Courses in collaboration with other universities, industries, foreign institutions, etc. : **N.A.**
8. Details of courses/programmes discontinued (if any) with reasons: **N.A.**
9. Number of Teaching posts

Name of the post	Sanctioned -	Filled
Professors	-	-
Associate Professors	-	-
Asst. Professors	01	01

10. Faculty profile with name, qualification, designation, specialization, (D.Sc./D.Litt. /Ph.D. / M. Phil. etc.,)

Name	Qualification	Designation	Specialization	No. of Years of Experience	No. of Ph.D. Students guided for the last 4 years
Sri. S. Sudheer Kumar	M.C.A., M.Phil.,	Lecturer in Computer Science	Comp. Science & Application	15	-
Sri. T. Nagaraju	M.Sc.	Lecturer in Computer Appl.		3	-

11. List of senior visiting faculty : **1. J. Ramesh, Lecturer in Comp. Appl.**

SRR Degree & PG College, Karimnagar

**2. V. Srinivas, Lecturer in Comp. Scince,
SRR Degree & PG College, Karimnagar**

3. Ch. Ramakrishna, Asst. Professor,

Department of Comp. Science,

University College,

Satavahana University, Karimnagar

12. Percentage of lectures delivered and practical classes handled (programme wise) by temporary faculty : **100%**

13. Student -Teacher Ratio (programme wise) : **70 : 1**

14. Number of academic support staff (technical) and administrative staff; sanctioned and filled : **N.A.**

15. Qualifications of teaching faculty with DSc/ D.Litt/ Ph.D/ MPhil/PG. : **02**

16. Number of faculty with ongoing projects from a) National b) International funding agencies and grants received; : **Nil**

17. Departmental projects funded by DST-FIST; UGC, DBT, ICSSR, etc. and total grants received : **Nil**

18. Research Centre /facility recognized by the University : **N.A.**

19. Publications:

- * Publication per faculty : Nil
- * Number of papers published in peer reviewed journals (national / international) by faculty and students : Nil
- * Number of publications listed in International Database (For Eg: Web of Science, Scopus, Humanities International Complete, Dare Database - International Social Sciences Directory, EBSCO host, etc.) : Nil
- * Monographs : Nil
- * Chapter in Books : Nil
- * Books Edited : Nil
- * Books with ISBN/ISSN numbers with details of publishers : Nil
- * Citation Index : Nil
- * SNIP : Nil
- * SJR : Nil
- * Impact factor : -
- * h-index : -

20. Areas of consultancy and income generated : Nil

21. Faculty as members in

- a) National committees : Nil
- b) International Committees : Nil
- c) Editorial Boards.... : Nil

22. Student projects

- a) Percentage of students who have done in-house projects including inter departmental/programme : Nil
- b) Percentage of students placed for projects in organizations outside the institution i.e. in Research laboratories/Industry/other agencies : Nil

23. Awards/ Recognitions received by faculty and students : Nil

24. List of eminent academicians and scientists/ visitors to the department : Nil

25. Seminars/ Conferences/Workshops organized & the source of funding

- a)National : Nil
- b)International : Nil

26. Student profile programme/course wise:

Name of the Course/programme (refer question no. 4)	Applications received	Selected	Enrolled	
			*M	*F
B.Com (C.A) 2008-09	65	48	38	10
B.Com (C.A) 2009-10	69	55	43	12
B.Com (C.A) 2010-11	76	60	40	20
B.Com (C.A) 2011-12	63	47	38	09
B.Sc. (C.Sc) 2011-12	31	19	14	05
B.Com (C.A) 2012-13	48	37	23	14
B.Sc. (C.Sc) 2012-13	19	04	04	00

*M=Male F=Female

Pass percentage year wise - B.Com (CA)

Year	B.Com (CA) – I Year			B.Com (CA)– II Year			B.Com(CA)– III Year			Total %
	Appeared	Passed	%	Appeared	Passed	%	Appeared	Passed	%	
2008-09	40	09	22.50	21	11	52.38	27	13	48.15	37.50
2009-10	48	24	50.00	31	12	38.71	21	18	85.71	54.00
2010-11	50	13	26.00	43	24	55.81	29	15	51.72	42.62
2011-12	42	21	50.00	39	25	64.10	40	24	60.00	57.85
2011-12 (B.Sc.-MPCs)	17	05	29.41	-	-	-	-	-	-	29.41

27. Diversity of Students

Name of the Course	% of students from the same state	% of students from other States	% of students from abroad
B.Com (Comp. Appl.)	100	Nil	Nil
B.Sc, (Comp. Science)	100	Nil	Nil

28. How many students have cleared national and state competitive examinations such as NET, SLET, GATE, Civil services, Defense services, etc.? : **Nil**

29. Student progression

Student progression	Against % enrolled
UG to PG	21%
PG to M.Phil.	10%
PG to Ph.D.	0.5%
Ph.D. to Post-Doctoral	-
Employed	10 %
<ul style="list-style-type: none"> • Campus selection • Other than campus recruitment 	
Entrepreneurship/Self-employment	60 %

30. Details of Infrastructural facilities

- a) Library : **Common Library**
- b) Internet facilities for Staff & Students : **Available at JKC**
- c) Class rooms with ICT facility : **e-Class**
- d) Laboratories : **Computer Laboratory**

31. Number of students receiving financial assistance from college, university, government or other agencies :

70 % of students are receiving financial assistance in the form of scholarships under different categories from Government.

32. Details on student enrichment programmes (special lectures / workshops / seminar) with external experts : **Two Extension Lectures are arranged**

33. Teaching methods adopted to improve student learning :

Lecture Method and Practical Method

34. Participation in Institutional Social Responsibility (ISR) and Extension activities : **NSS and Literacy improvement Project**

35. SWOC analysis of the department and Future plans :

Strengths:

- Latest i-5, i-3 systems with high configuration in the computer laboratory.
- Good infrastructure
- Versatile and skilled teachers with committed attitude to teaching
- personal tutorials for final year students
- good employment opportunities for students of computer science and computer applications
- provision of good study material specially prepared by the faculty

Weaknesses:

- Excessive work load and lack of teachers
- Lack of departmental library
- Compulsion of paying the relatively high fees for the course
- Choice of very few courses in P.G. for students of this course
- Less number of students seek to join the course because of un-affordability of the fees.

Opportunities:

- Possibility of introducing add-on courses
- Orientation to new technology can be given to students
- Increasing demand for computer-oriented skills.

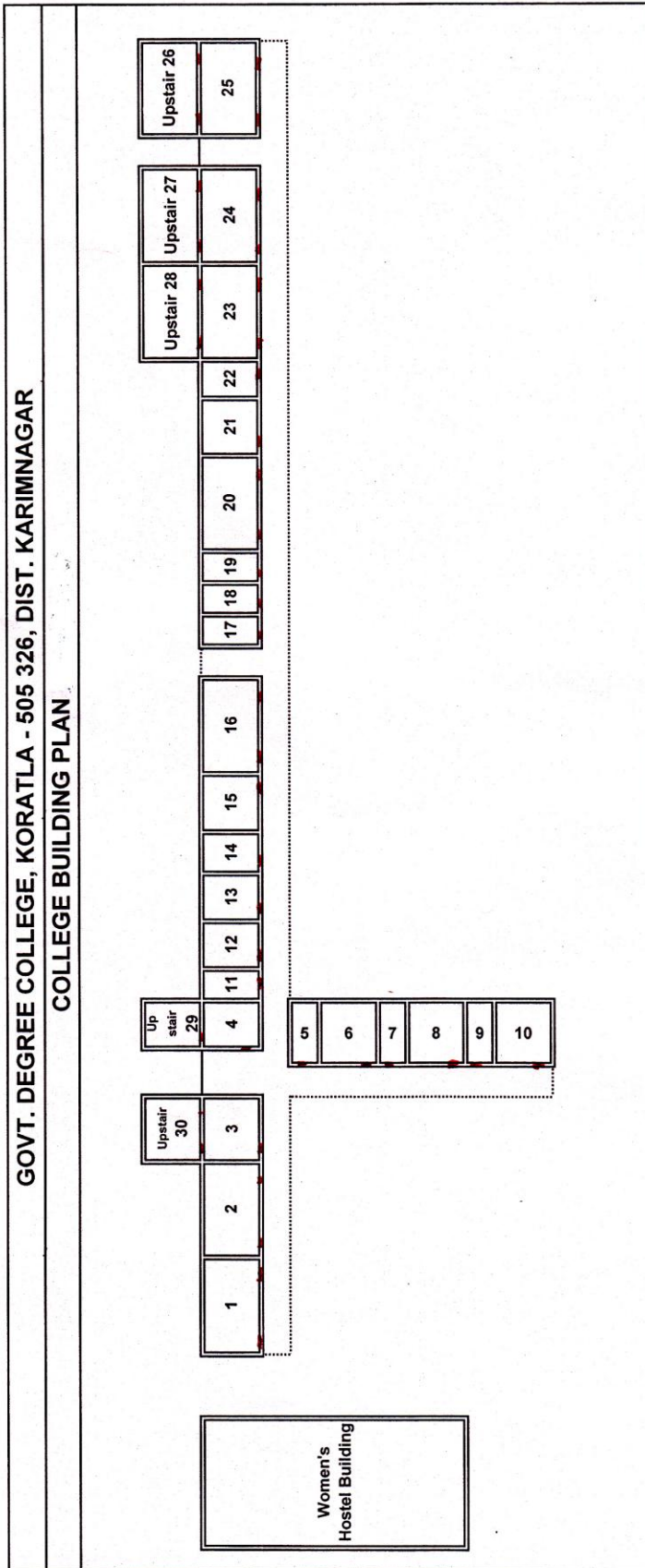
Challenges:

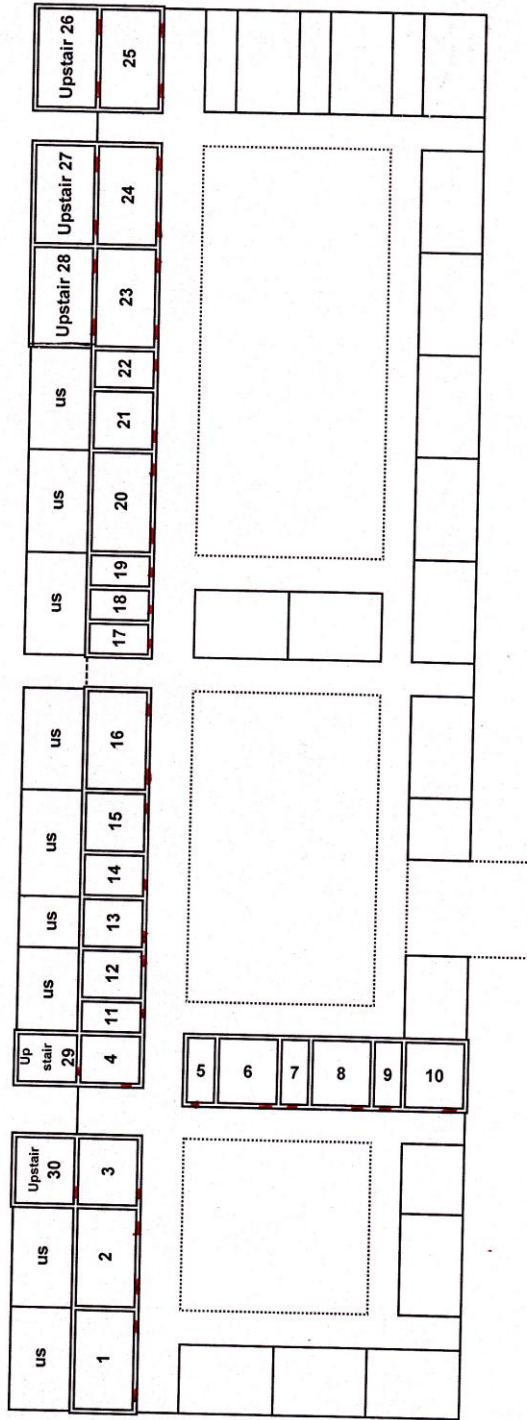
- Weakened image among students due to fluctuations in IT sector
- Heavy syllabus especially in B.Sc (Comp. Science)
- Ensuring zero drop-outs

Future plans:

- To start add-on course in 'Office Assistance'
- To acquire 50 more systems to expand the laboratory
- To increase the number of teaching staff and assistants
- To provide the networking for all the systems with internet.

ANNEXURES



[illegible]



COLLEGE BUILDING