

GOVERNMENT DEGREE COLLEGE, MANCHERIAL
Report on results and details of Students Satisfaction Survey (SSS) 2016-17

Government Degree College, Mancherial is the institute which got embedded with the inherent closed loop system corrects itself through the feedbacks/surveys on continuous basis. Students Satisfaction Survey (SSS) is one among these surveys. This survey includes majorly the questionnaire recommended by NAAC. Apart from Teaching-Learning and Evaluation aspects, the survey has included the institution infrastructural and welfare aspects too. The organization of survey, guidelines, questionnaire and the results are provided as follows.

Student Satisfaction Survey
Key Indicator - 2.7.1
Under Criterion II of Teaching – Learning and Evaluation
(Includes the questionnaire suggested by National Assessment and Accreditation Council (NAAC))

Guidelines for Students:

The Higher Education sector is highly competitive. To impart quality Technical education and provide competent resources to the society, stakeholder's inputs create a cutting edge in achieving this. Our institute **Govt. Degree College, Mancherial** being a premier government higher institution accreditation in NAAC and ISO strives to reach high altitudes with continuous inputs especially from the major stakeholder's, i.e. you: our students. Your genuine input and suggestions will take it to the greater heights. Please join us in reaching this goal and setting up a bench mark in the society in creating & nurturing world's best engineers.

A student will have to respond to all the questions given in the following format with her/his sincere effort and thought. Her/his identity will not be revealed. This survey is being conducted by **Govt. Degree College, Mancherial** and its motto is to upgrade the quality in higher education. A student will have to respond to all the questions given in the following format with her/his sincere effort and thought. Her/his identity will not be revealed.

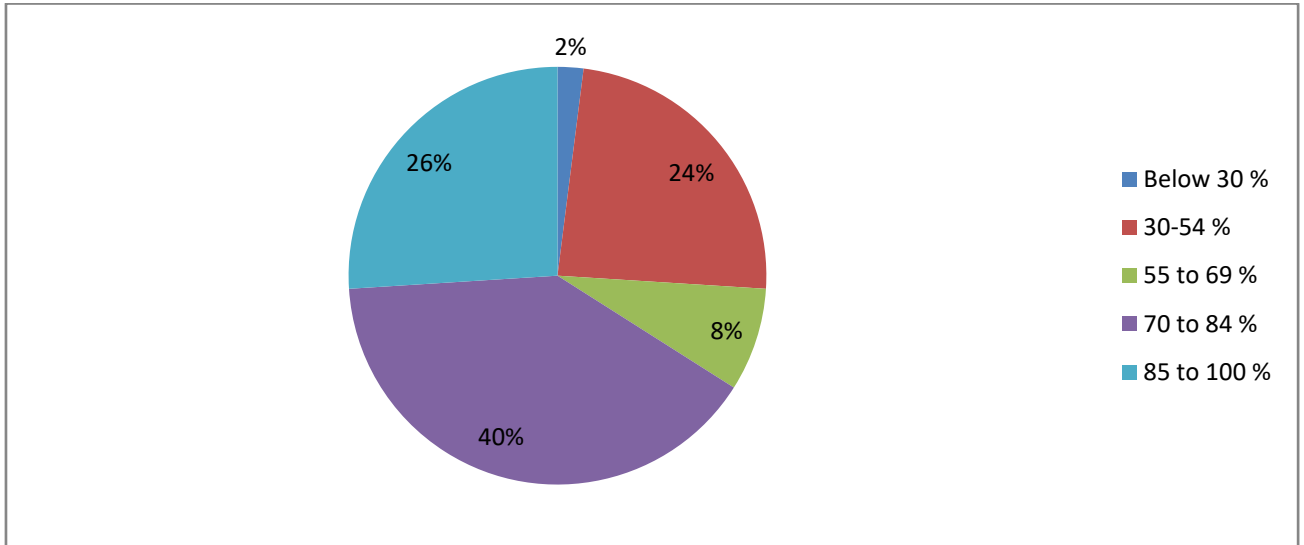
- A) Please confirm this is the first and only time you answer this survey.
 - a) Yes b) No
- B) Age:
- C) Branch /Department:
- D) Gender:
 - a) Female b) Male c) Transgender
- E) What degree program are you pursuing now?
 - a) Bachelor's b) Master's c) Doctorate d) Other

Instructions to fill the questionnaire

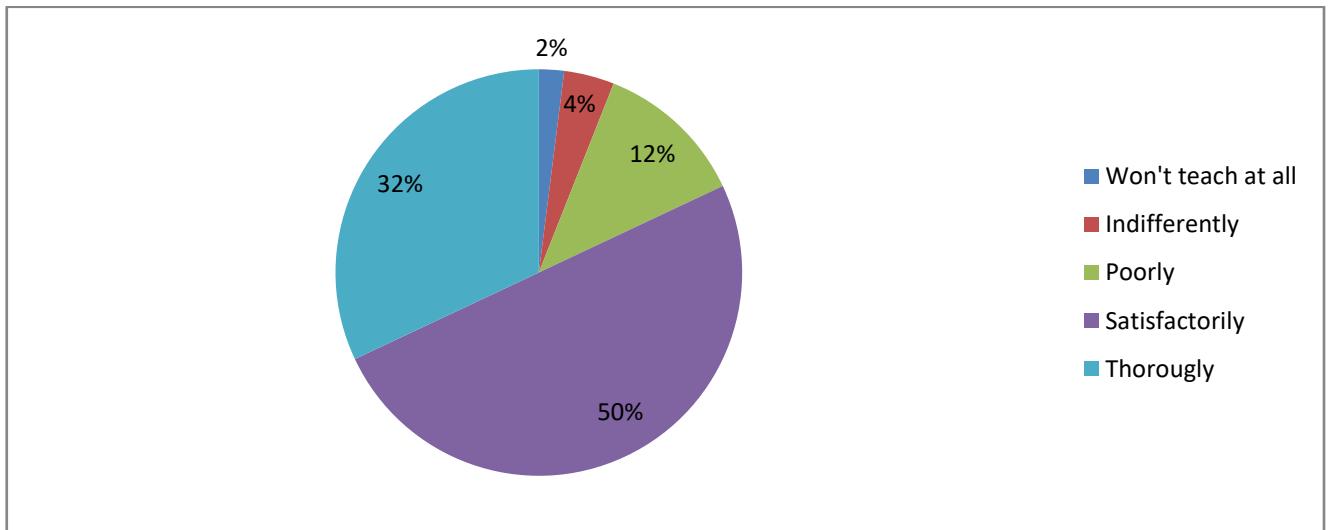
- All questions should be compulsorily attempted.
- Each question has five responses, choose the most appropriate one.

The responses given by the students for the questionnaire provided to the students are given below.

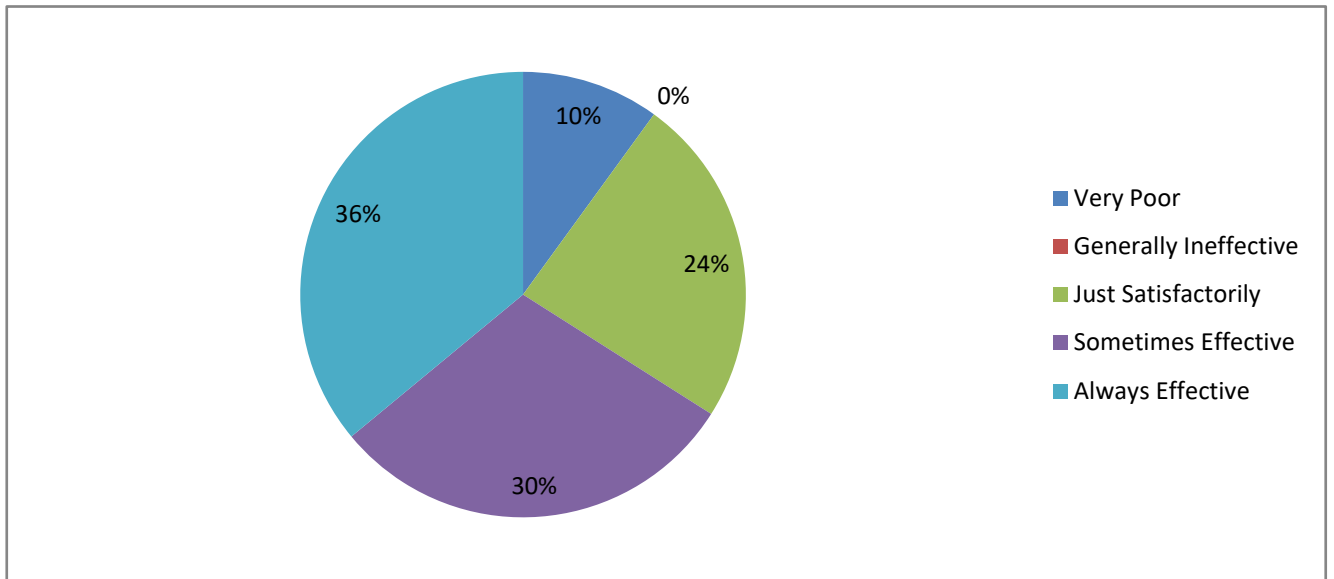
1. How much of the syllabus was covered in the class?



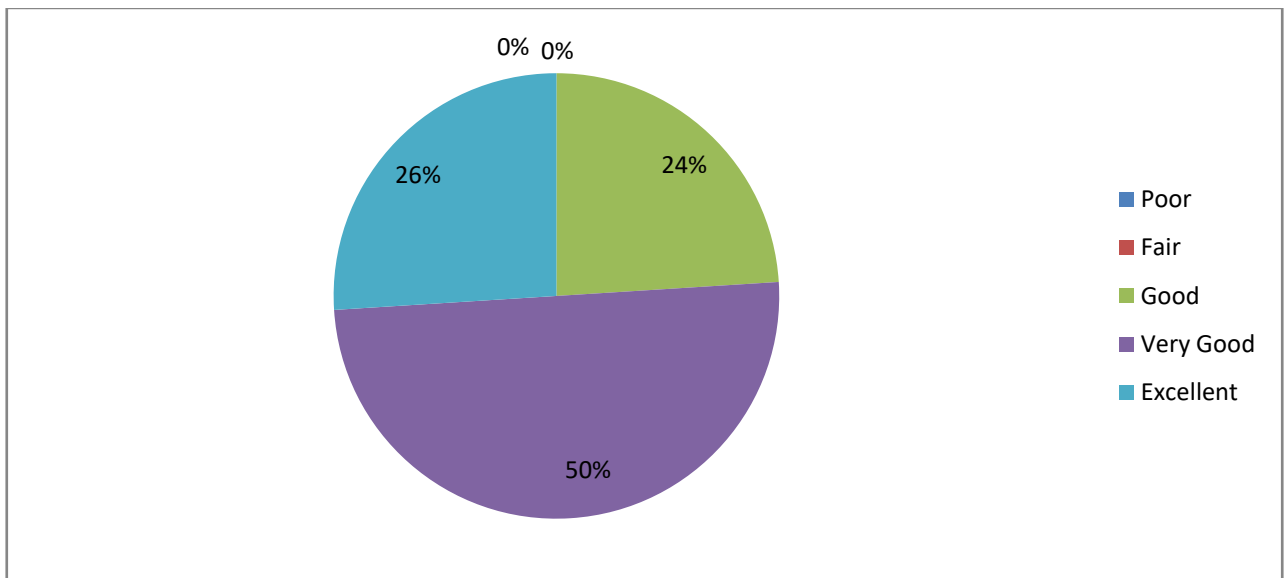
2. How well did the teachers prepare for the classes?



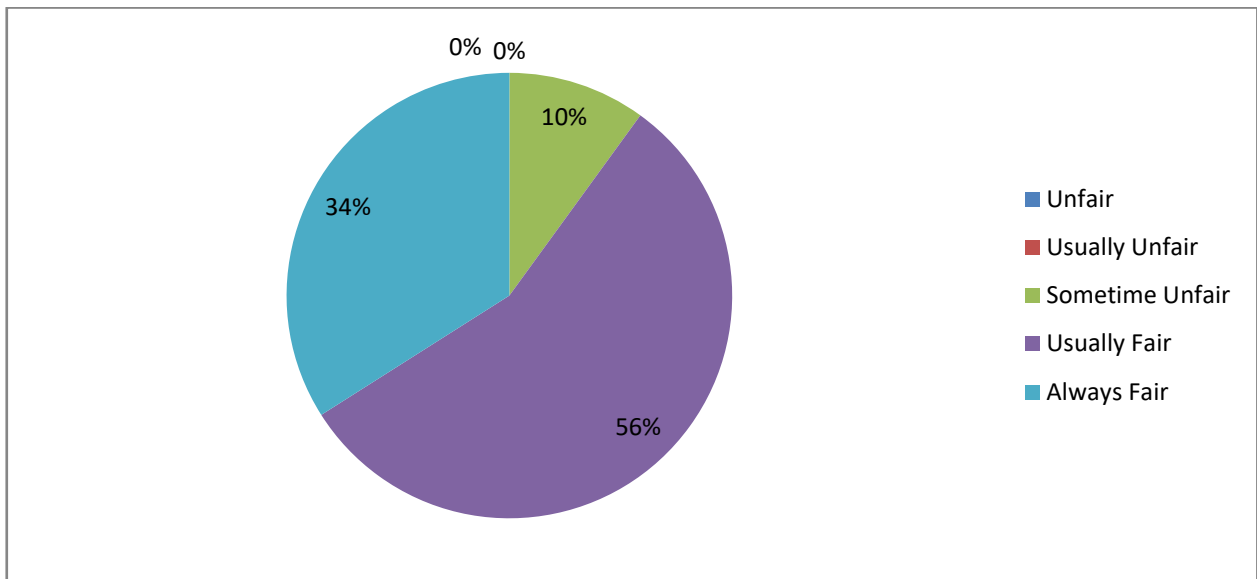
3. How well were the teachers able to communicate?



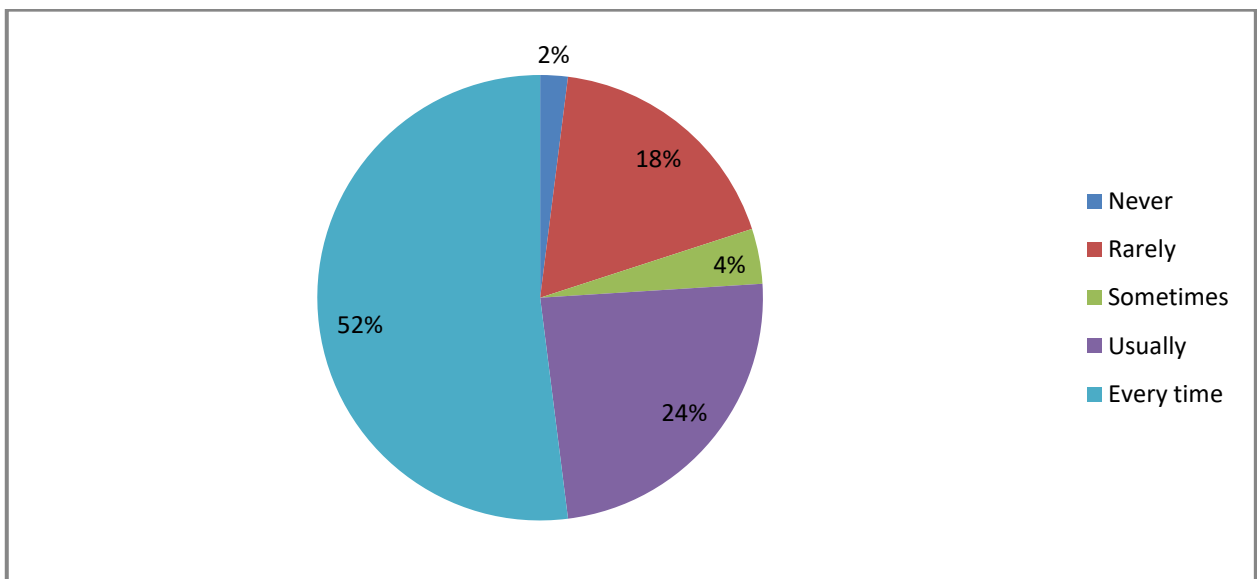
4. The teacher's approach to teaching can best be described as



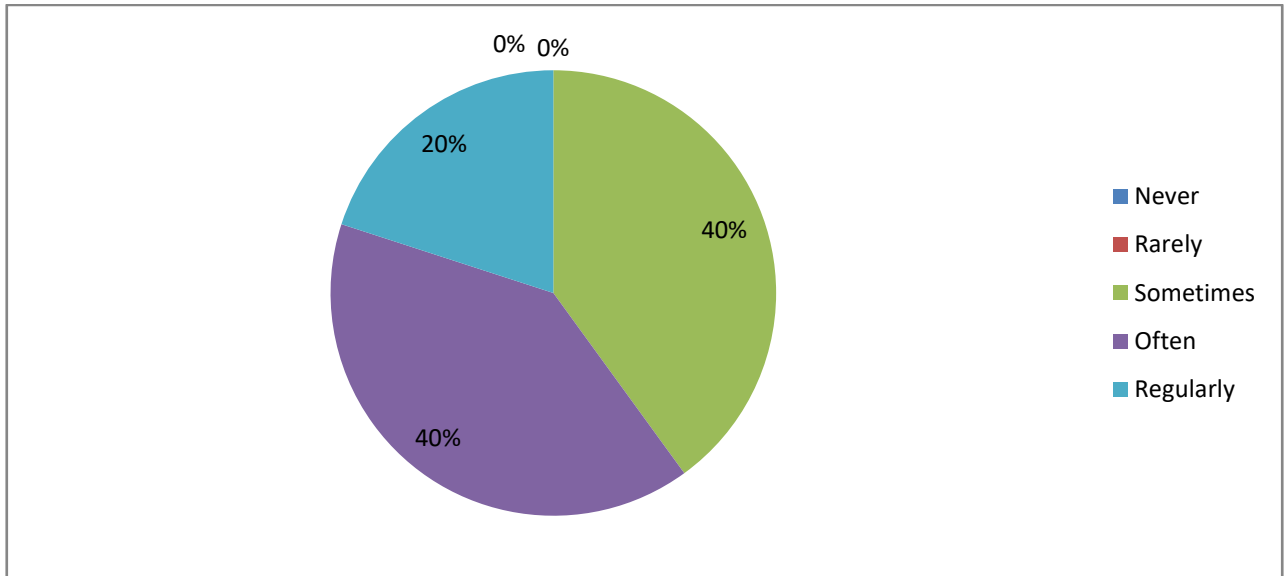
5. Fairness of the internal evaluation process by the teachers.



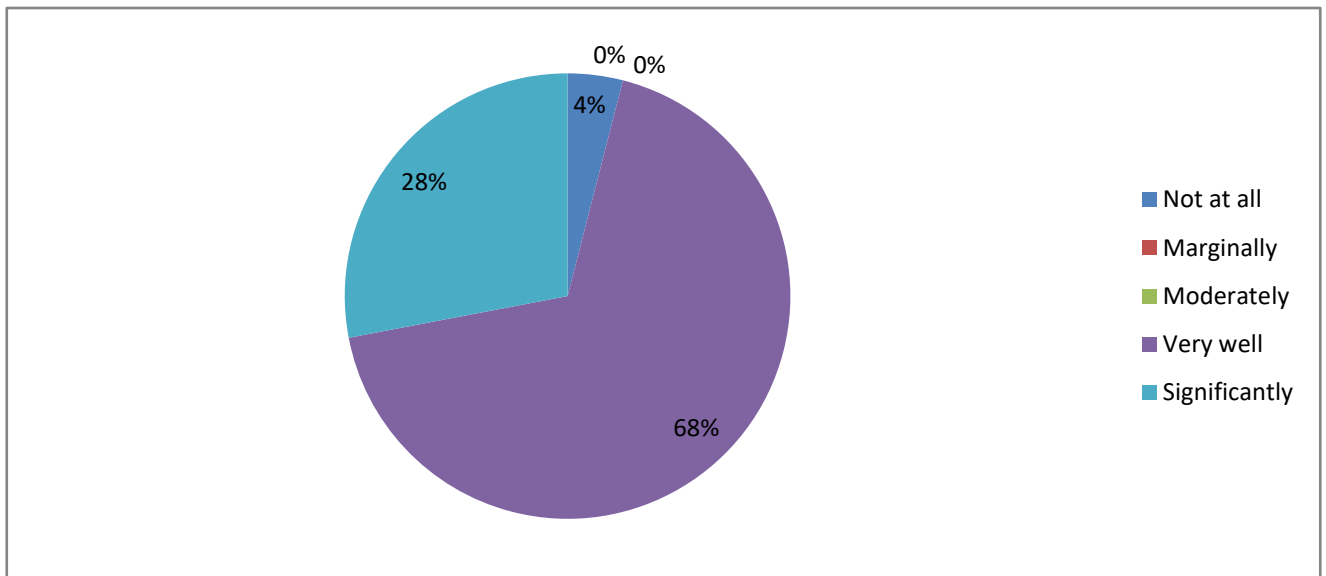
6. Was your performance in assignments discussed with you?



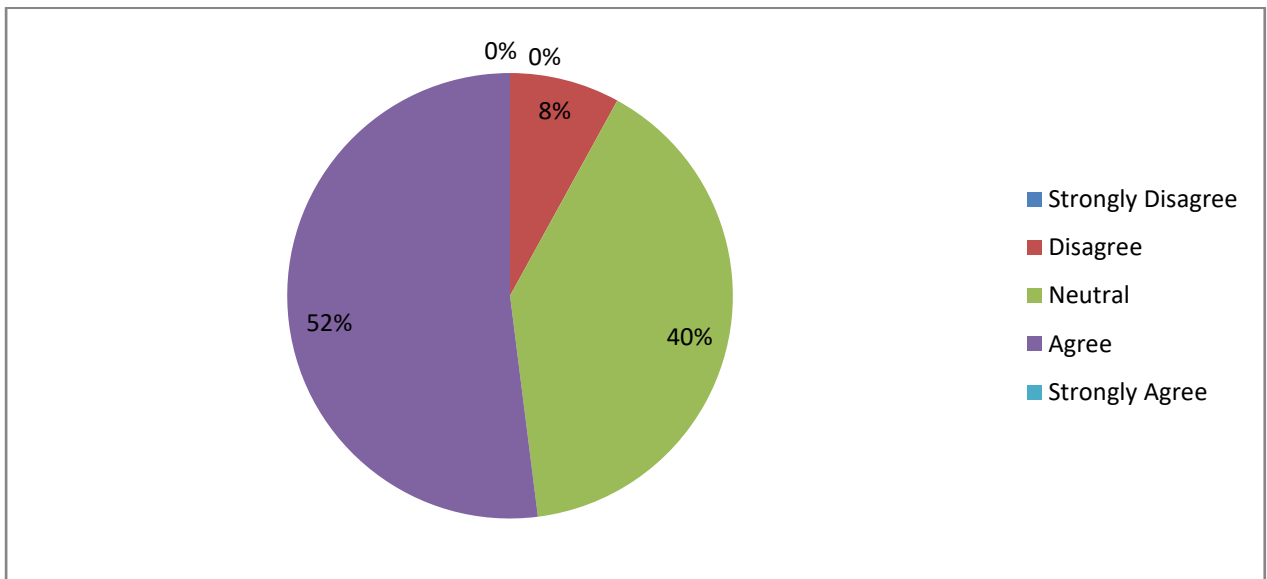
7. The institute takes active interest in promoting internship, student exchange, field visit opportunities for students.



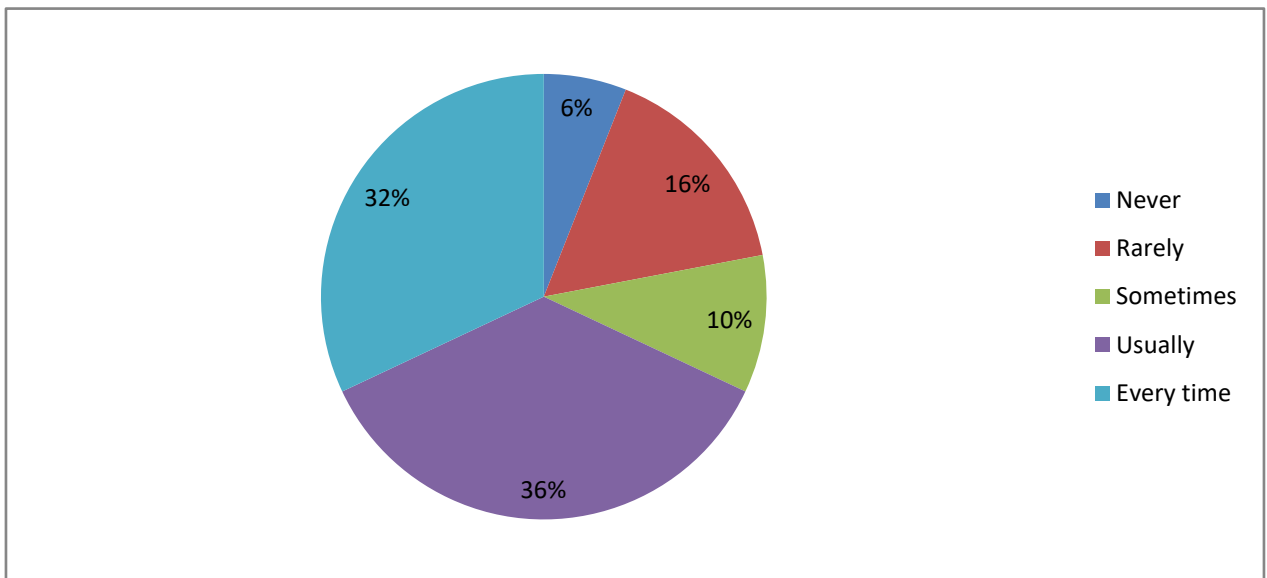
8. The teaching and mentoring process in your institution facilitates you in cognitive, social and emotional growth.



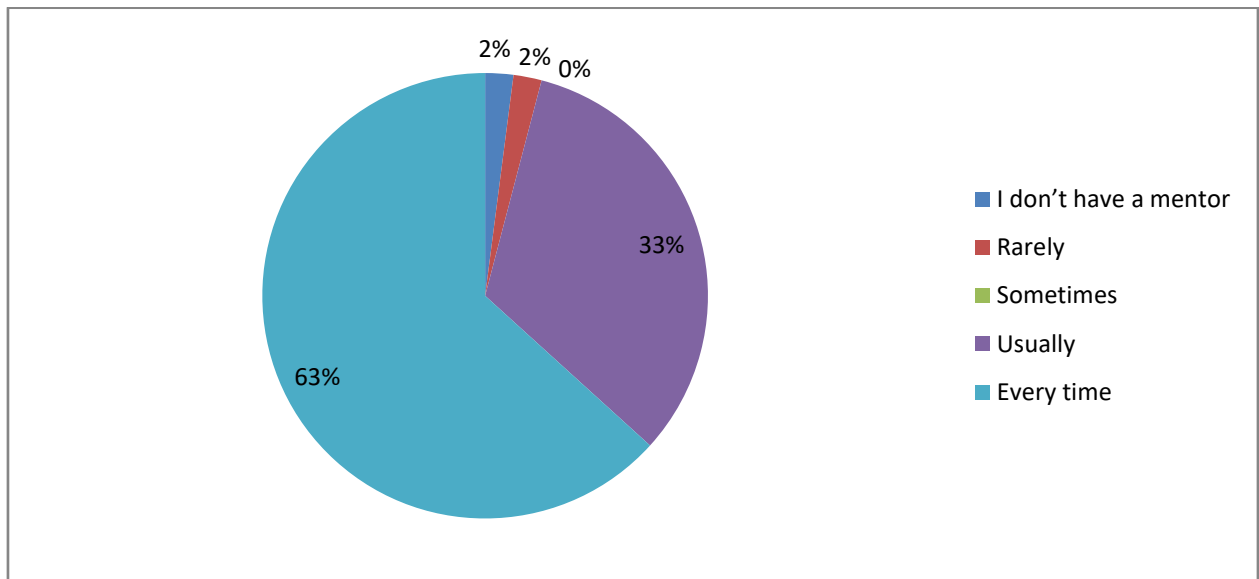
9. The institution provides multiple opportunities to learn and grow.



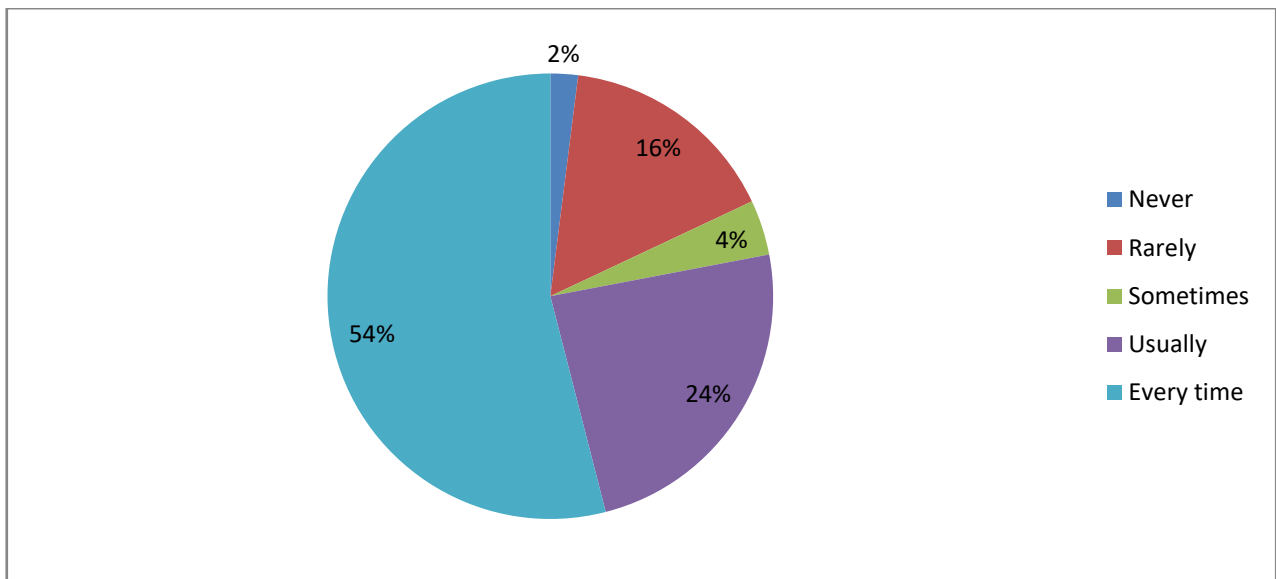
10. Teachers inform you about your expected competencies, course outcomes and programme outcomes.



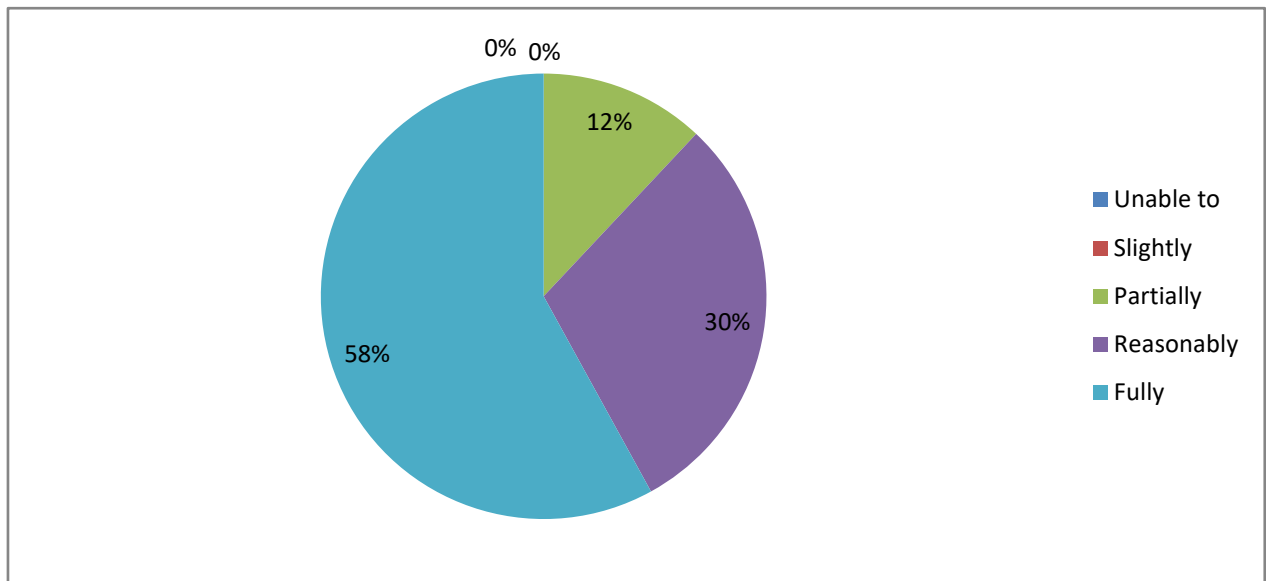
11. Your mentor does a necessary follow-up with an assigned task to you



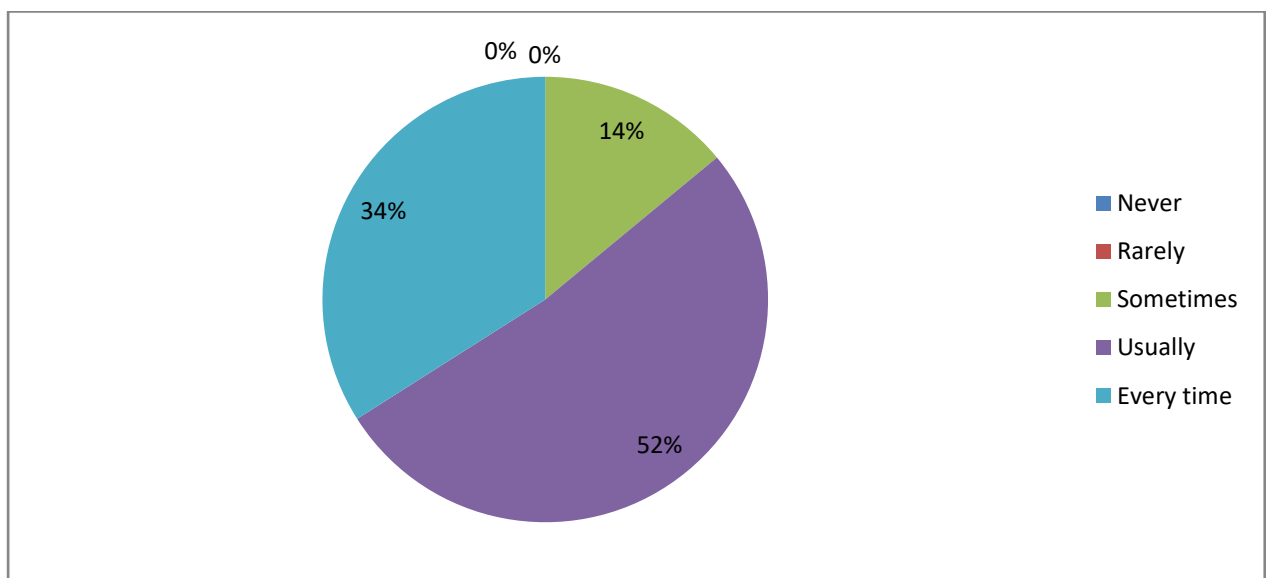
12. The teachers illustrate the concepts through examples and applications.



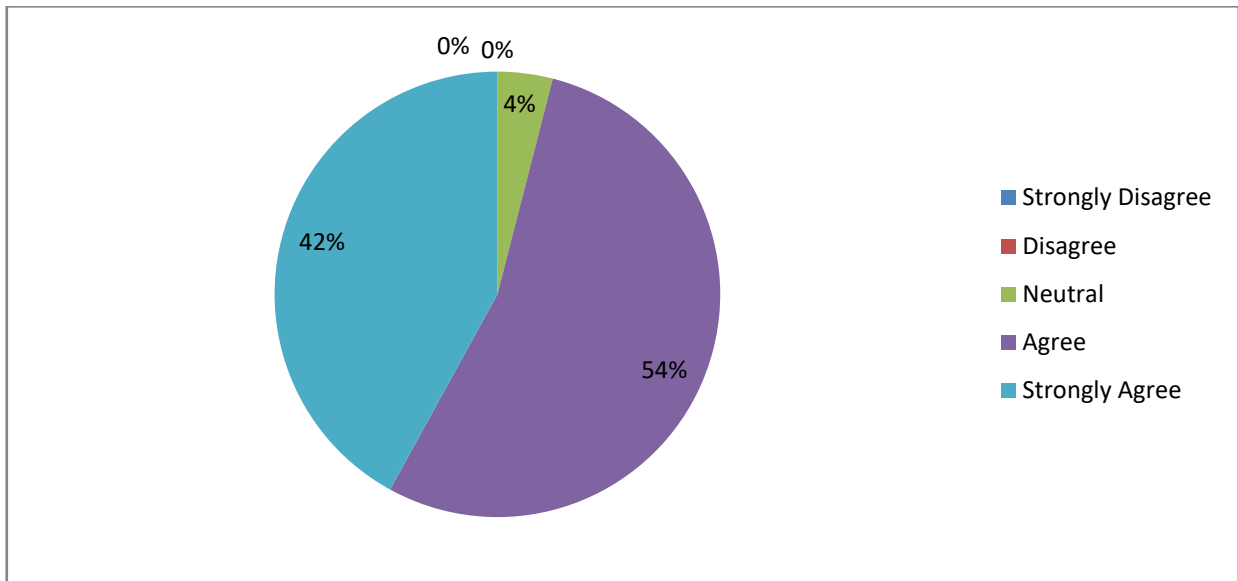
13. The teachers identify your strengths and encourage you with providing right level of challenges.



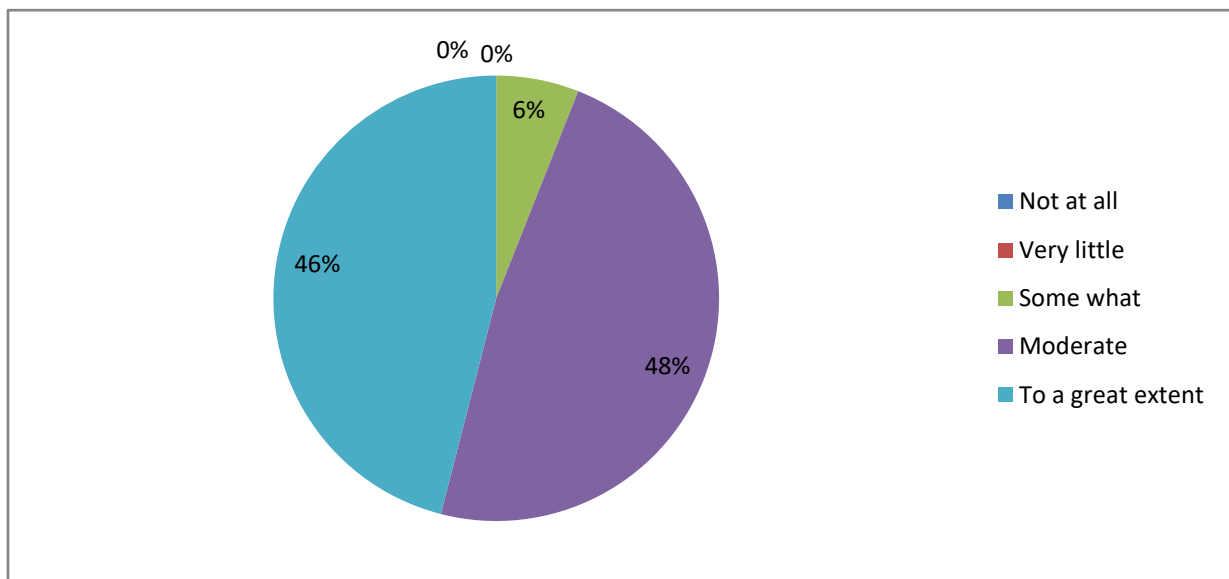
14. Teachers are able to identify your weaknesses and help you to overcome them.



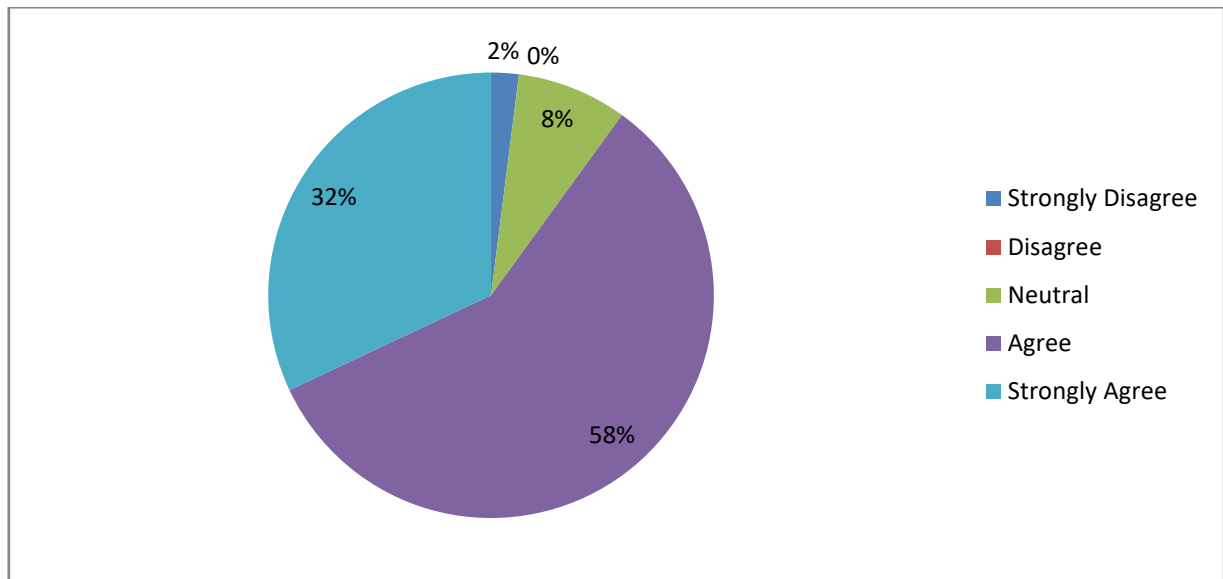
15. The institution makes effort to engage students in the monitoring, review and continuous quality improvement of the teaching learning process.



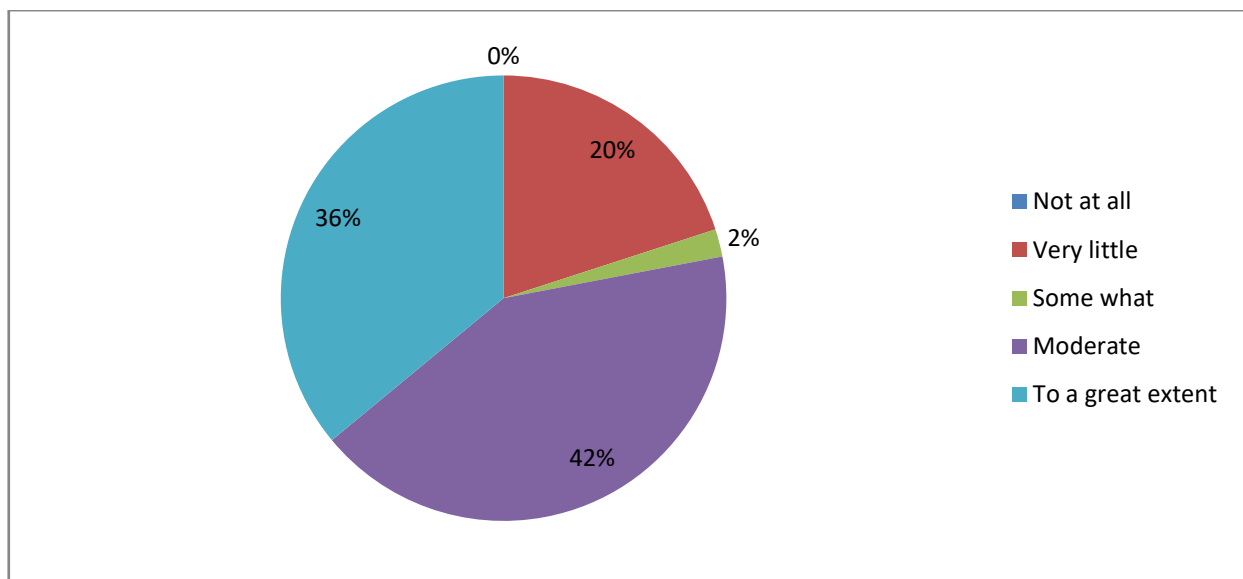
16. The institute/ teachers use student centric methods, such as experiential learning, participative learning and problem solving methodologies for enhancing learning experiences.



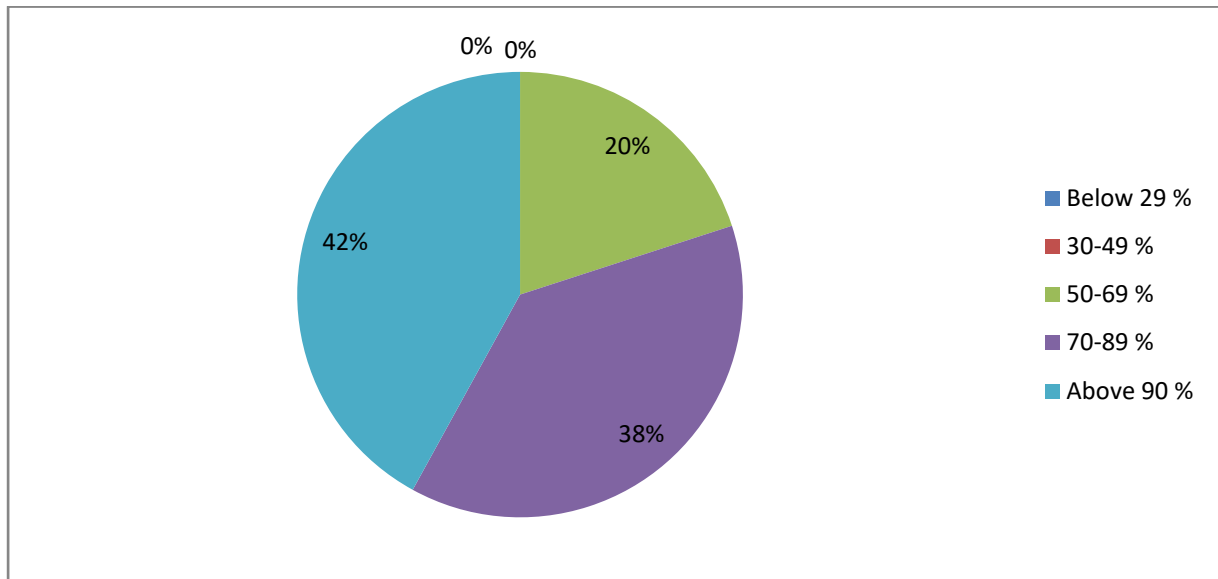
17. Teachers encourage you to participate in extracurricular activities.



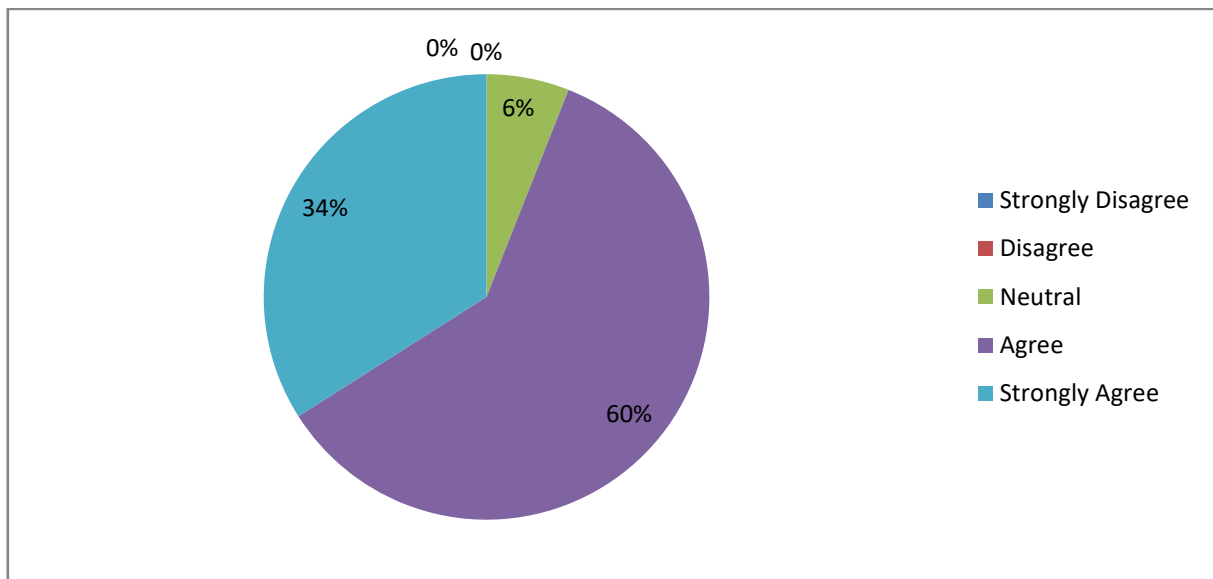
18. Efforts are made by the institute/ teachers to inculcate soft skills, lifeskills and employability skills to make you ready for the world of work.



19. What percentage of teachers use ICT tools such as LCD projector, Multimedia, etc. while teaching.



20. The overall quality of teaching-learning process in your institute is very good



21. Provide observation / suggestions to improve the overall teaching – learning experience in your institution.

- Faculty is very much interested in explaining subject oriented examples. They are fair in correcting internals and externals
- Overall good teaching
- We are fine with faculty with good suggestions
- More interaction
- Fine with faculty.
- Excellent faculty
- The college needs to provide on campus job opportunity.
- Self defense techniques are to be provided to girl students.
- The sanitation in the college needs to be maintained.
- Need of improvement in experimental learning.