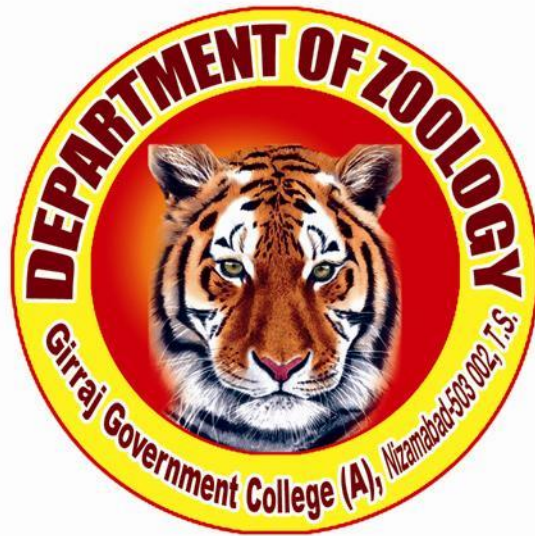


GIRRAJ GOVT. COLLEGE (A)
NIZAMABAD



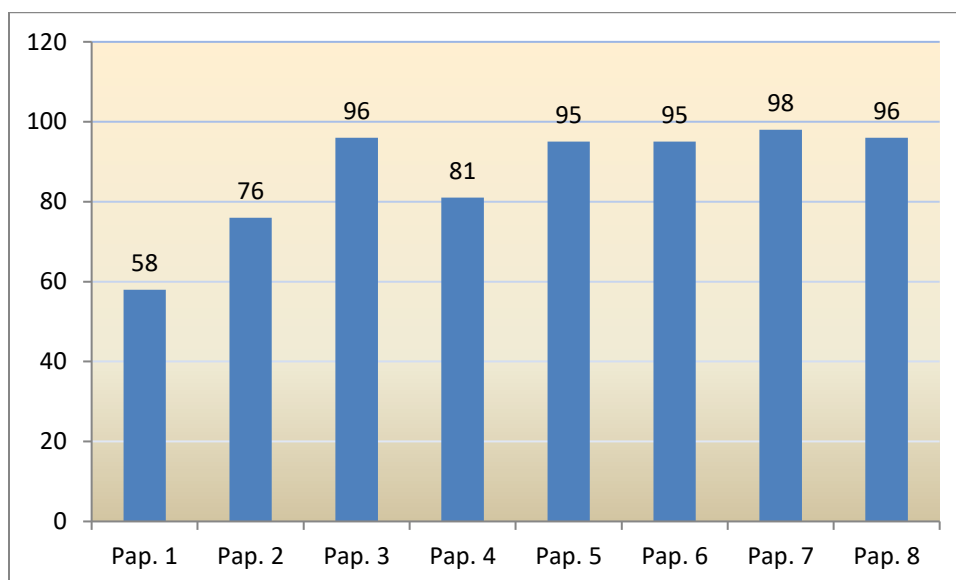
RESULT ANALYSIS
2016 To 2021

RESULT ANALYSIS

2020-2021 Academic Year							
S.No	Group	Sem	Paper	Appeared	Passed	Pass %	Remarks
1	B Z C	VI	6	128	122	95	
2	BC Z C			20	18	90	
3	BT Z C			44	43	98	
4	M Z C			23	22	96	
5	B Z C		8	128	124	97	
6	BC Z C			20	18	90	
7	BT Z C			44	44	100	
8	M Z C			23	23	100	
1	BC Z C	IV	4	6	4	67	
2	BT B Z			3	3	100	
3	BT Z C			13	11	85	
4	B Z C			149	122	82	
5	M Z C			9	6	67	
1	BT B Z	II	2	15	11	73	
2	B Z C			180	129	72	
3	B Z Cs			13	11	85	
4	B Z Psy			2	2	100	
5	BT M Z			3	2	67	
6	M Z C			28	26	93	
7	M Z Psy			1	1	100	
8	BT Z C			8	8	100	
1	B Z C	V	5	128	121	95	
2	BC Z C			20	18	90	
3	BT Z C			44	43	98	
4	M Z C			23	23	100	
5	B Z C		7	128	126	98	
6	BC Z C			20	19	95	
7	BT Z C			44	44	100	
8	M Z C			23	23	100	
1	B Z C	III	3	149	142	95	
2	BC Z C			6	6	100	
3	BT B Z			3	3	100	
4	BT Z C			13	13	100	
5	M Z C			9	9	100	
1	BT B Z	I	1	15	9	60	
2	B Z C			180	90	50	
3	B Z Cs			13	12	92	
4	B Z Psy			2	2	100	
5	BT M Z			3	2	67	
6	M Z C			28	22	79	
7	M Z Psy			1	1	100	
8	BT Z C			8	8	100	

S.No	Sem	Paper	Appeared	Passed	Pass %	Remarks
1	I	Pap. 1	195	182	58	
2	II	Pap. 2	250	187	76	
3	III	Pap. 3	236	228	96	
4	IV	Pap. 4	174	142	81	
5	V	Pap. 5	215	205	95	
6	VI	Pap. 6	87	85	95	
7	V	Pap. 7	215	211	98	
8	VI	Pap. 8	32	30	96	

Paper wise Result Analysis of Academic Year 2020-2021



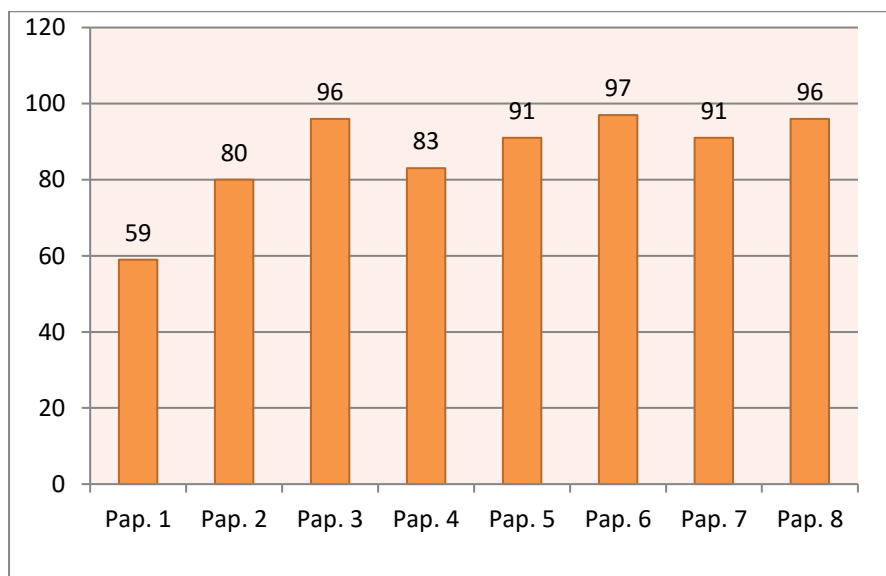
Paper wise Result Analysis of Academic Year 2020-2021

2019-2020 Academic Year

S.No	Group	Sem	Paper	Appeared	Passed	Pass %	Remarks
1	B Z C	VI	6	79	77	97	
2	BC Z C			36	34	94	
3	M Z C			37	37	100	
4	B Z C		8	79	74	94	
5	BC Z C			36	35	97	
6	M Z C			37	37	100	
1	BC Z C	IV	4	22	17	77	
2	BT Z C			46	42	91	
3	B Z C			136	109	80	
4	M Z C			23	21	91	
1	BC Z C	II	2	7	7	100	
2	BT B Z			3	3	100	
3	BT Z C			13	13	100	
4	B Z C			174	136	78	
5	M Z C			12	8	67	
1	M Z C	V	5	37	34	92	
2	B Z C			78	71	91	
3	BC Z C			37	34	92	
4	M Z C		7	37	34	92	
5	B Z C			78	74	95	
6	BC Z C			37	31	84	
1	B Z C	III	3	23	22	96	
2	BC Z C			46	44	96	
3	BT Z C			138	132	96	
4	M Z C			23	23	100	
1	BC Z C	I	1	8	5	63	
2	BT B Z			3	2	67	
3	BT Z C			13	11	85	
4	B Z C			187	109	58	
5	M Z C			12	5	42	

S.No	Sem	Paper	Appeared	Passed	Pass %	Remarks
1	I	Pap. 1	223	132	59	
2	II	Pap. 2	209	167	80	
3	III	Pap. 3	230	221	96	
4	IV	Pap. 4	227	189	83	
5	V	Pap. 5	152	139	91	
6	VI	Pap. 6	152	148	97	
7	V	Pap. 7	152	139	91	
8	VI	Pap. 8	152	146	96	

Paper wise Result Analysis of Academic Year 2019-2020



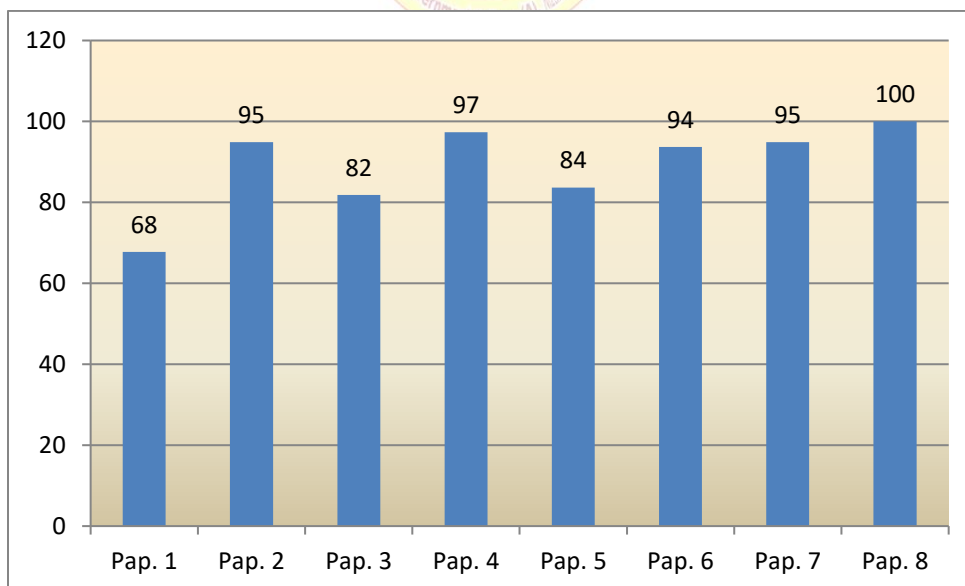
Paper wise Result Analysis of Academic Year 2019-2020

2018-2019 Academic Year

S.No	Group	Sem	Paper	Appeared	Passed	Pass %	Remarks
1	B Z C E/M	VI	6	18	16	89	
2	B Z C T/M			33	33	100	
3	M Z C			24	23	96	
4	BC Z C			20	17	85	
5	B Z C E/M		8	18	18	100	
6	B Z C T/M			33	33	100	
7	M Z C			24	24	100	
8	BC Z C			20	20	100	
1	B Z C E/M	IV	4	30	30	100	
2	B Z C T/M			45	42	93	
3	M Z C			38	38	100	
4	BC Z C			38	37	97	
1	B Z C E/M	II	2	92	85	92	
2	B Z C T/M			50	50	100	
3	M Z C			22	21	95	
4	BC Z C			24	20	83	
5	BT Z C			46	46	100	
1	B Z C E/M	V	5	18	14	78	
2	B Z C T/M			36	31	86	
3	M Z C			24	20	83	
4	BC Z C			20	17	85	
5	B Z C E/M		7	18	18	100	
6	B Z C T/M			35	35	100	
7	M Z C			24	22	92	
8	BC Z C			20	17	85	
1	B Z C E/M	III	3	31	29	94	
2	B Z C T/M			44	34	77	
3	M Z C			39	33	85	
4	BC Z C			40	30	75	
1	B Z C E/M	I	1	98	66	67	
2	B Z C T/M			52	39	75	
3	M Z C			23	16	70	
4	BC Z C			24	11	46	
5	BT Z C			48	34	71	

S.No	Sem	Paper	Appeared	Passed	Pass %	Remarks
1	I	Pap. 1	245	166	68	68
2	II	Pap. 2	234	222	95	95
3	III	Pap. 3	154	126	82	82
4	IV	Pap. 4	151	147	97	97
5	V	Pap. 5	98	82	84	84
6	VI	Pap. 6	95	89	94	94
7	V	Pap. 7	97	92	95	95
8	VI	Pap. 8	95	95	100	100

Paper wise Result Analysis of Academic Year 2018-2019



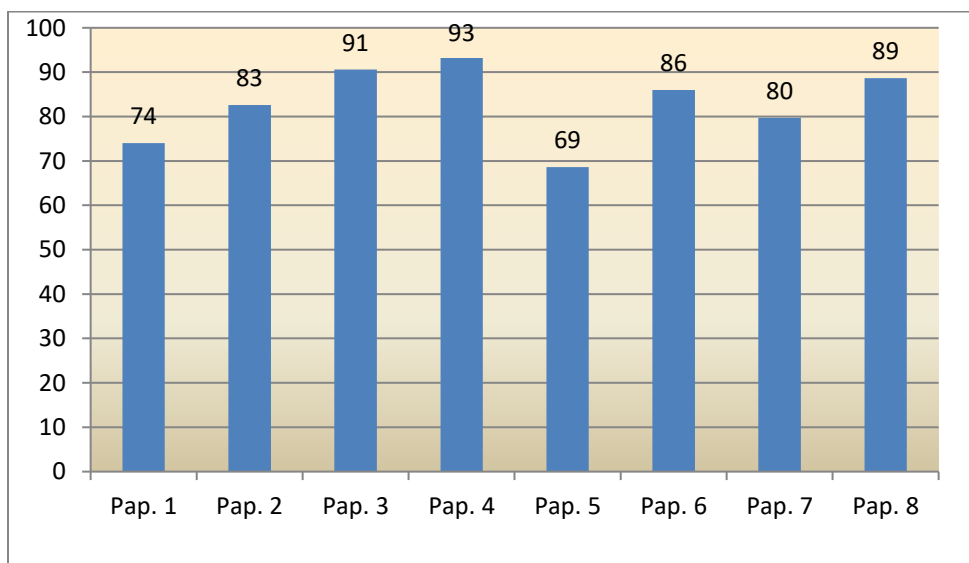
Paper wise Result Analysis of Academic Year 2018-2019

2017-2018 Academic Year

S.No	Group	Sem	Paper	Appeared	Passed	Pass %	Remarks
1	B Z C E/M	VI	6	35	34	97	
2	B Z C T/M			49	44	90	
3	M Z C			26	22	85	
4	BC Z C			40	29	73	
5	B Z C E/M		8	35	35	100	
6	B Z C T/M			49	45	92	
7	M Z C			26	21	81	
8	BC Z C			40	32	80	
1	B Z C E/M	IV	4	20	18	90	
2	B Z C T/M			37	35	95	
3	M Z C			25	23	92	
4	BC Z C			21	20	95	
1	B Z C E/M	II	2	33	27	82	
2	B Z C T/M			45	33	73	
3	M Z C			43	39	91	
4	BC Z C			40	34	85	
1	B Z C E/M	V	5	35	26	74	
2	B Z C T/M			50	38	76	
3	M Z C			27	20	74	
4	BC Z C			41	21	51	
5	B Z C E/M		7	35	29	83	
6	B Z C T/M			50	45	90	
7	M Z C			27	22	81	
8	BC Z C			41	26	63	
1	B Z C E/M	III	3	20	18	90	
2	B Z C T/M			39	36	92	
3	M Z C			25	24	96	
4	BC Z C			22	18	82	
1	B Z C E/M	I	1	38	28	74	
2	B Z C T/M			51	42	82	
3	M Z C			44	32	73	
4	BC Z C			40	26	65	

S.No	Sem	Paper	Appeared	Passed	Pass %	Remarks
1	I	Pap. 1	173	128	74	
2	II	Pap. 2	161	133	83	
3	III	Pap. 3	106	96	91	
4	IV	Pap. 4	103	96	93	
5	V	Pap. 5	153	105	69	
6	VI	Pap. 6	150	129	86	
7	V	Pap. 7	153	122	80	
8	VI	Pap. 8	150	133	89	

Paper wise Result Analysis of Academic Year 2017-2018



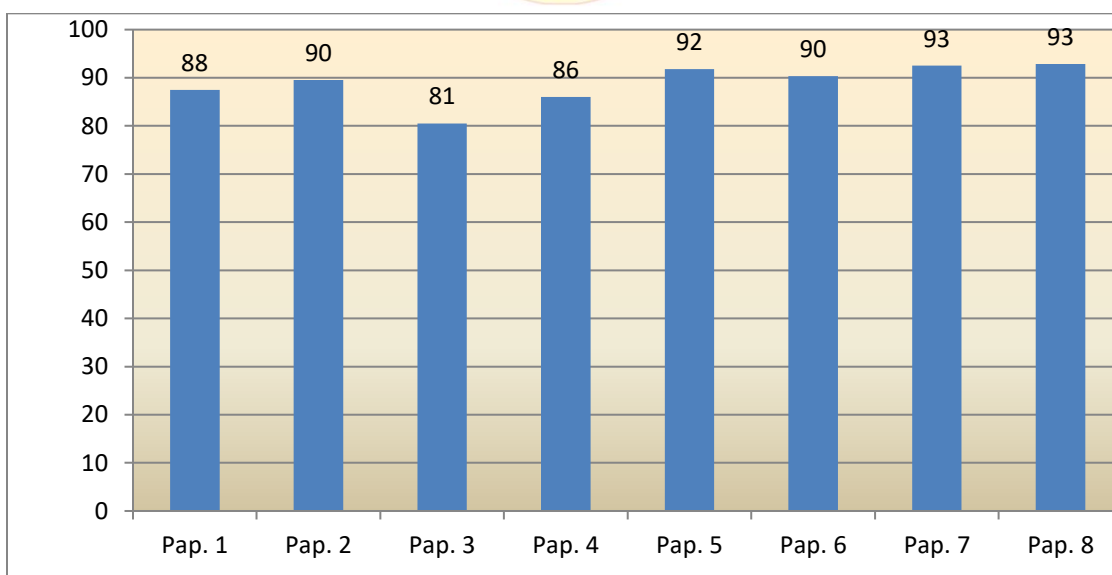
Paper wise Result Analysis of Academic Year 2017-2018

2016-2017 Academic Year

S.No	Group	Sem	Paper	Appeared	Passed	Pass %	Remarks
1	B Z C E/M	VI	6	34	30	88	
2	B Z C T/M			44	40		
3	M Z C			22	20	91	
4	BC Z C			14	13	93	
5	B Z C E/M		8	33	32	97	
6	B Z C T/M			44	41	93	
7	M Z C			21	20	95	
8	BC Z C			14	11	79	
1	B Z C E/M	IV	4	37	34	92	
2	B Z C T/M			52	49	94	
3	M Z C			27	21	78	
4	BC Z C			41	31	76	
1	B Z C E/M	II	2	24	21	88	
2	B Z C T/M			42	40	95	
3	M Z C			25	22	88	
4	BC Z C			24	20	83	
1	B Z C E/M	V	5	38	34	89	
2	B Z C T/M			46	43	93	
3	M Z C			24	22	92	
4	BC Z C			14	13	93	
5	B Z C E/M		7	36	34	94	
6	B Z C T/M			46	43	93	
7	M Z C			24	21	88	
8	BC Z C			14	13	93	
1	B Z C E/M	III	3	38	35	92	
2	B Z C T/M			53	40	75	
3	M Z C			27	21	78	
4	BC Z C			41	32	78	
1	B Z C E/M	I	1	25	22	88	
2	B Z C T/M			44	39	89	
3	M Z C			26	23	88	
4	BC Z C			25	21	84	

S.No	Sem	Paper	Appeared	Passed	Pass %	Remarks
1	I	Pap. 1	120	105	88	
2	II	Pap. 2	115	103	90	
3	III	Pap. 3	159	128	81	
4	IV	Pap. 4	157	135	86	
5	V	Pap. 5	122	112	92	
6	VI	Pap. 6	114	103	90	
7	V	Pap. 7	120	111	93	
8	VI	Pap. 8	112	104	93	

Paper wise Result Analysis of Academic Year 2016-2017



Paper wise Result Analysis of Academic Year 2016-2017

**M.Sc. ZOOLOGY –RESULT ANALYSIS
FROM 2006-2007 TO 2019-2020**

YEAR	TOTAL APPEARED	DISTINCTION	I DIVISION	II DIVISION	III DIVISION	FAIL	TOTAL PASSED	PASS PERCENTAGE (%)
2006-07	21	01	10	08	--	02	19	90.47
2007-08	12	00	06	03	--	03	09	75.00
2008-09	28	02	16	06	--	04	24	85.71
2009-10	22	02	11	07	--	02	20	90.90
2010-11	27	06	09	01	--	11	16	59.25
2011-12	23	05	13	02	--	03	20	86.95
2012-13	26	05	17	02	--	02	24	92.30
2013-14	26	04	17	04	--	01	25	96.15
2014-15	24	13	11	0	--	00	24	100
2015-16	14	02	07	0	--	05	09	65
2016-17	24	02	19	0	--	03	21	87.5
2017-18	25	04	14	0	--	07	18	72
2018-19	24	09	11	0	--	04	20	83.33
2019-20	24	08	08	01	--	07	17	70.80

**M.Sc. ZOOLOGY – RESULT ANALYSIS
FROM 2006-2007 TO 2019-2020**

