

DISABLED FRIENDLY BARRIER (WHEEL CHAIR)



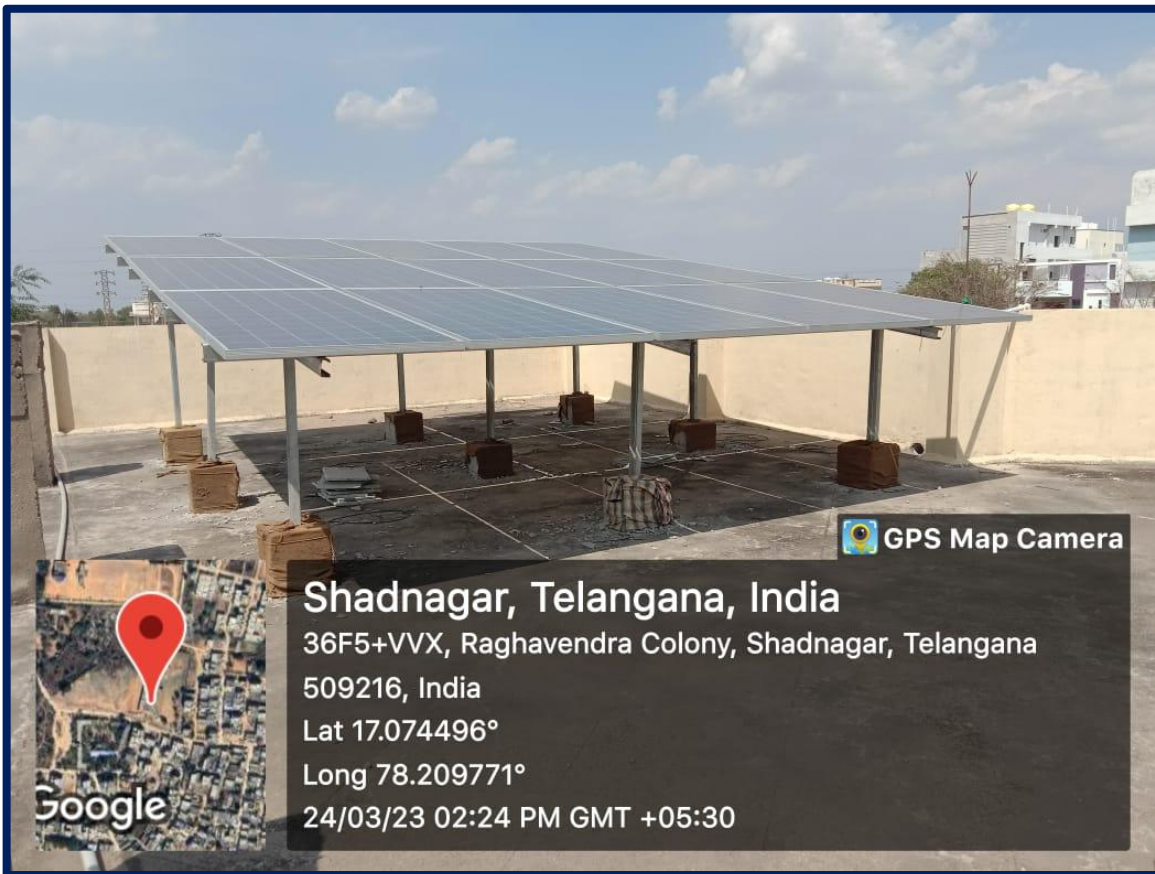
GREEN CAMPUS INITIATIVES





Shadnagar, Telangana, India
36F5+VVX, Raghavendra Colony, Shadnagar, Telangana
509216, India
Lat 17.0749°
Long 78.209631°
24/03/23 02:28 PM GMT +05:30

ALTERNATE SOURCE OF ENERGY (SOLAR PLANT)&ENERGY CONSERVATION MEASURES



Shadnagar, Telangana, India
36F5+VVX, Raghavendra Colony, Shadnagar, Telangana
509216, India
Lat 17.074496°
Long 78.209771°
24/03/23 02:24 PM GMT +05:30

INVERTER BATTERY



Management of biodegradable waste management

