



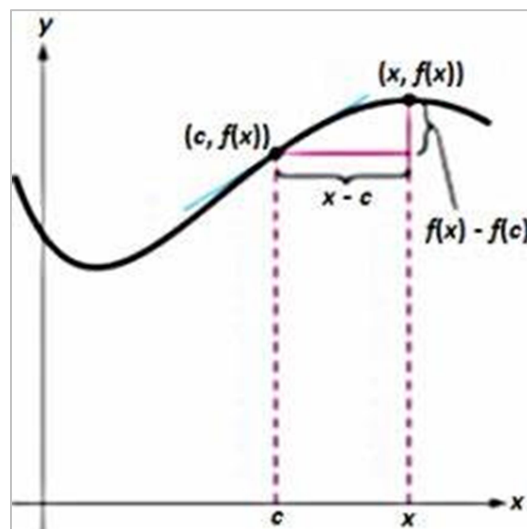
GOVERNMENT DEGREE COLLEGE SHADNAGAR

Ranga Reddy - Dist

Department of Mathematics

STUDY PROJECT – 2021 – 22

On



“Discussion Differentiability at a Point”

Government Degree College - Shadnagar

Ranga Reddy (Dist)

Student Study Project

on

“Discussion Differentiability at a Point”

Sl.No	Roll No	Name of the Student	Group
01	2003 3067 468 001	B.M.F.GAGAN	M.P.C
02	2003 3067 468 002	D. Mounika	M.P.C
03	2003 3067 468 001	A. Sravani	M.P.Cs
04	2003 3067 441 004	K. Nandini	M.P.C
05	2003 3067 468 004	P. Samuel	M.P.Cs
06	2003 3067 441 005	P. Akhila	M.P.C

T. Sri Krishna
Supervisor

T. Sri Krishna

Department of Mathematics

GDC - Shadnagar

T. Sri Krishna
Principal
GOVT. DEGREE COLLEGE
SHADNAGAR
GDC - Shadnagar


Government Degeer College Shadnagar

Ranga Reddy (Dist)

Certificate

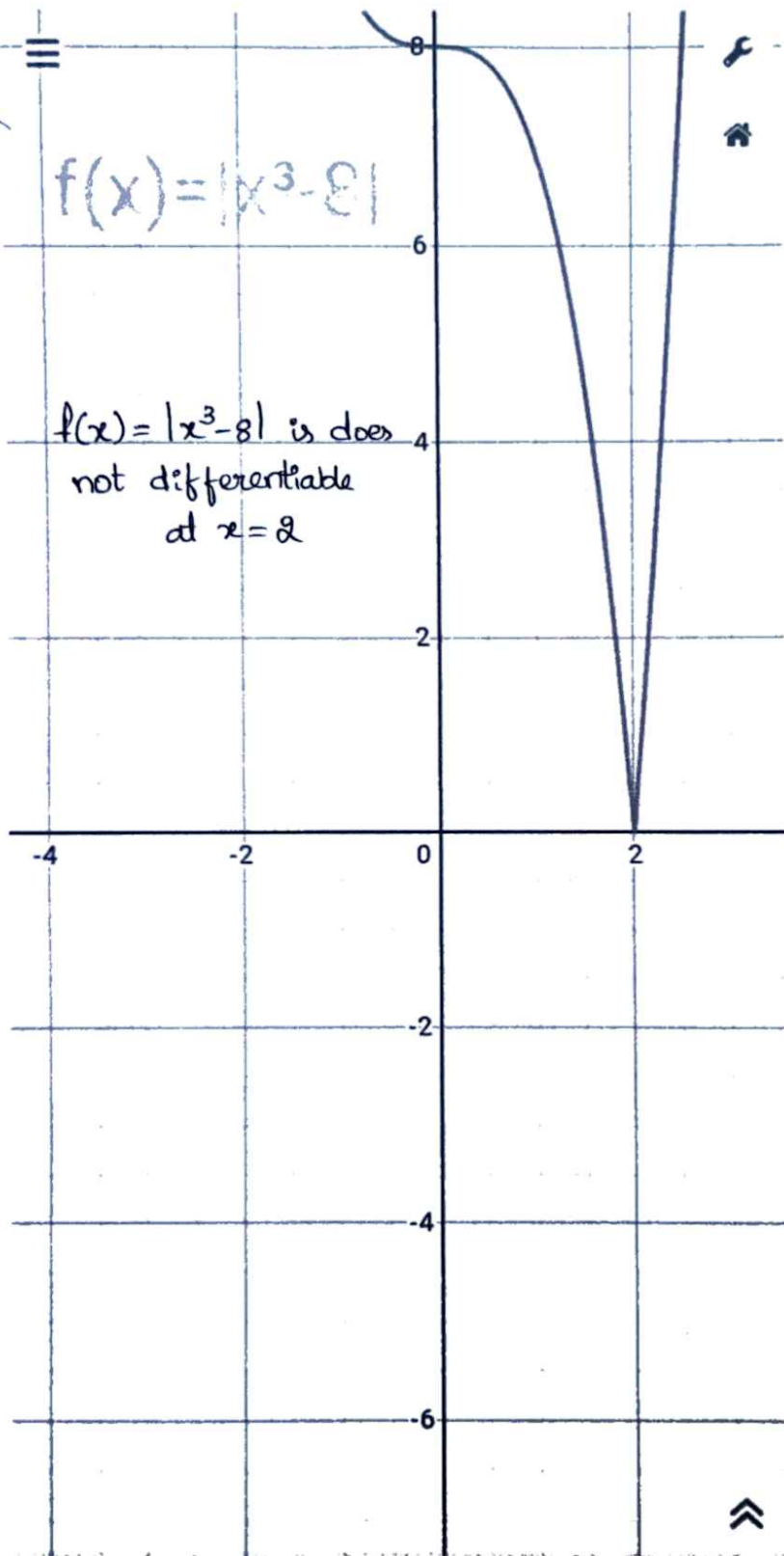
This is to certify that BSc (MPC & MPCs) SEM III students has successfully completed a Study Project on “**Discussion Differentiability at a Point**” for the academic year 2021 - 22 under the Supervision of **T. Sri Krishna, Department of Mathematics.**

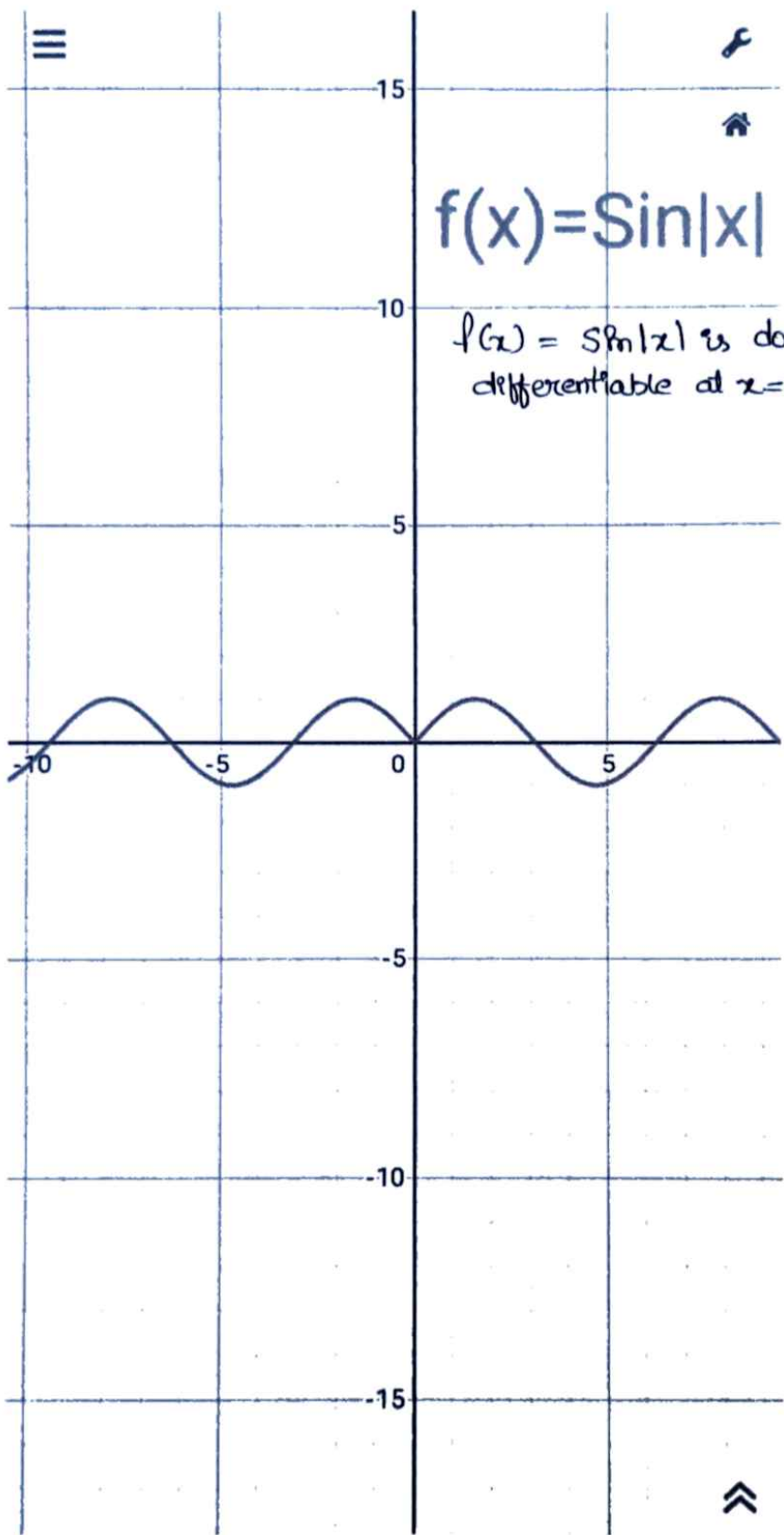
Hence it is certified


Principal
GOVT. DEGEER COLLEGE
SHADNAGAR
Ranga Reddy Dist.
GDC Shadnagar

$$f(x) = |x^3 - 8|$$

$f(x) = |x^3 - 8|$ is does
not differentiable
at $x = 2$





$$f(x) = \sin|x|$$

$f(x) = \sin|x|$ is doesnot differentiable at $x=0$



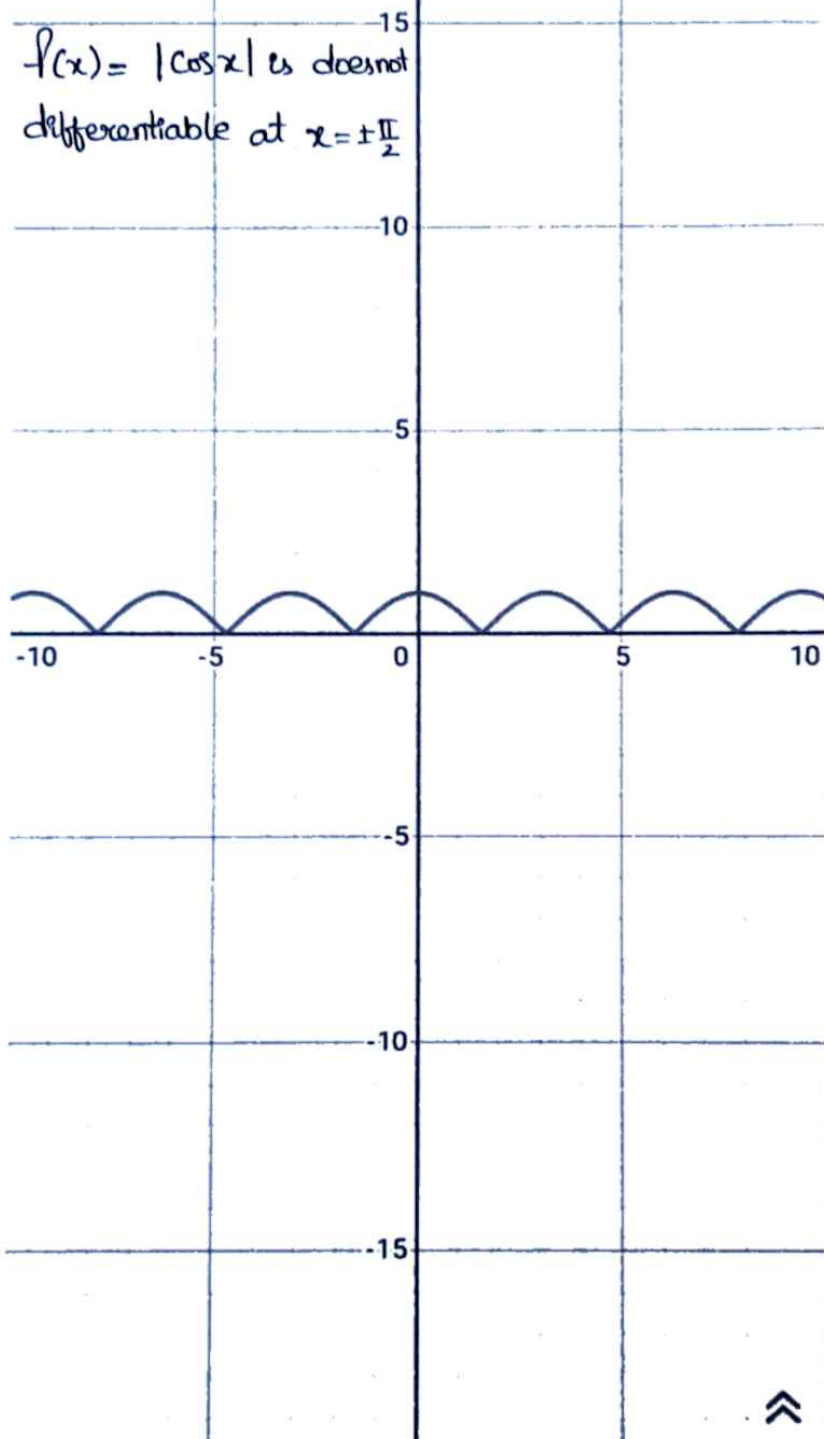
$$f(x) = |\sin x|$$

$f(x) = |\sin x|$ is
does not differentiable
at $x=0$



$$\bar{f}(x) = |\cos x|$$

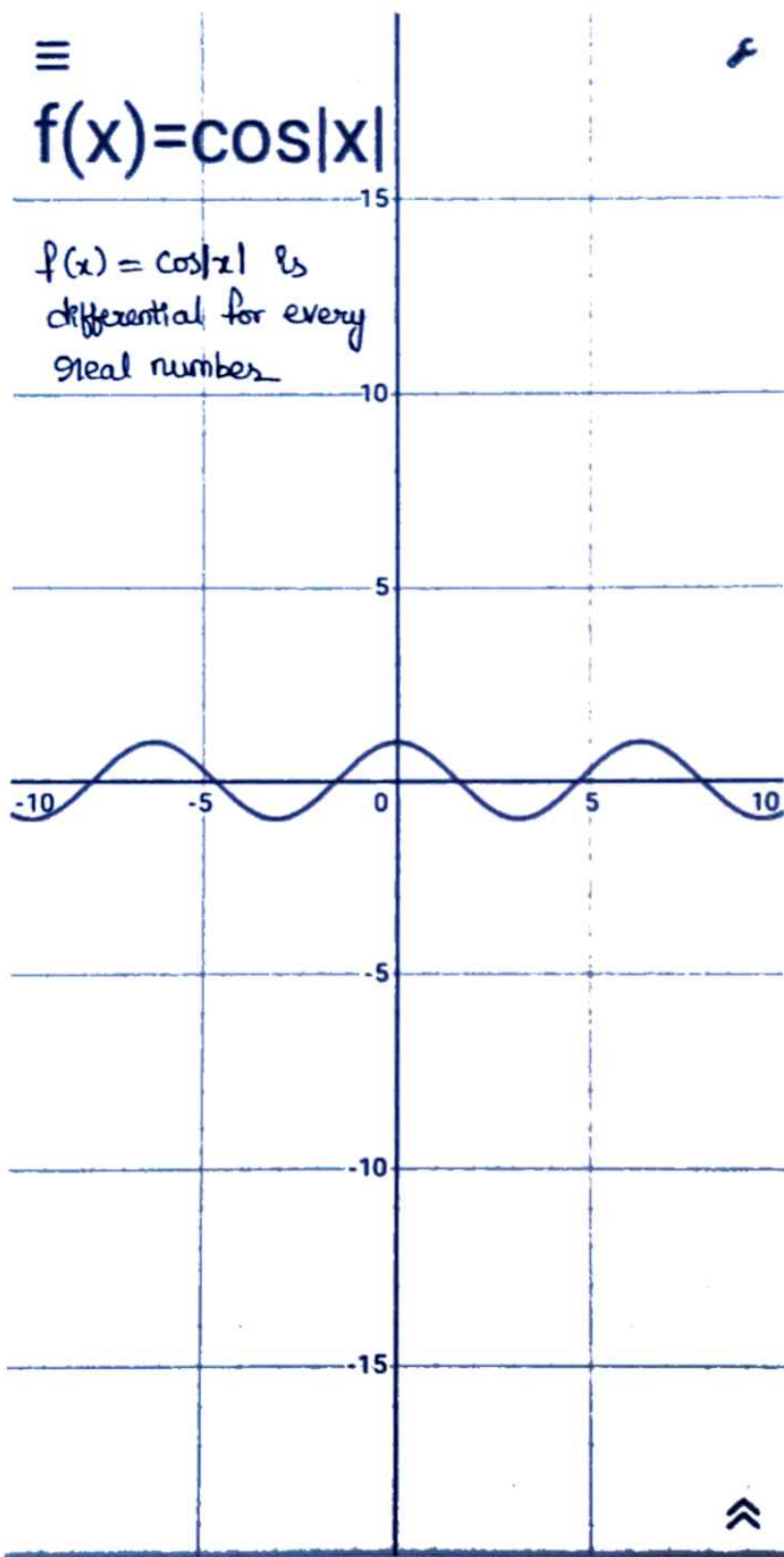
$f(x) = |\cos x|$ is not differentiable at $x = \pm \frac{\pi}{2}$



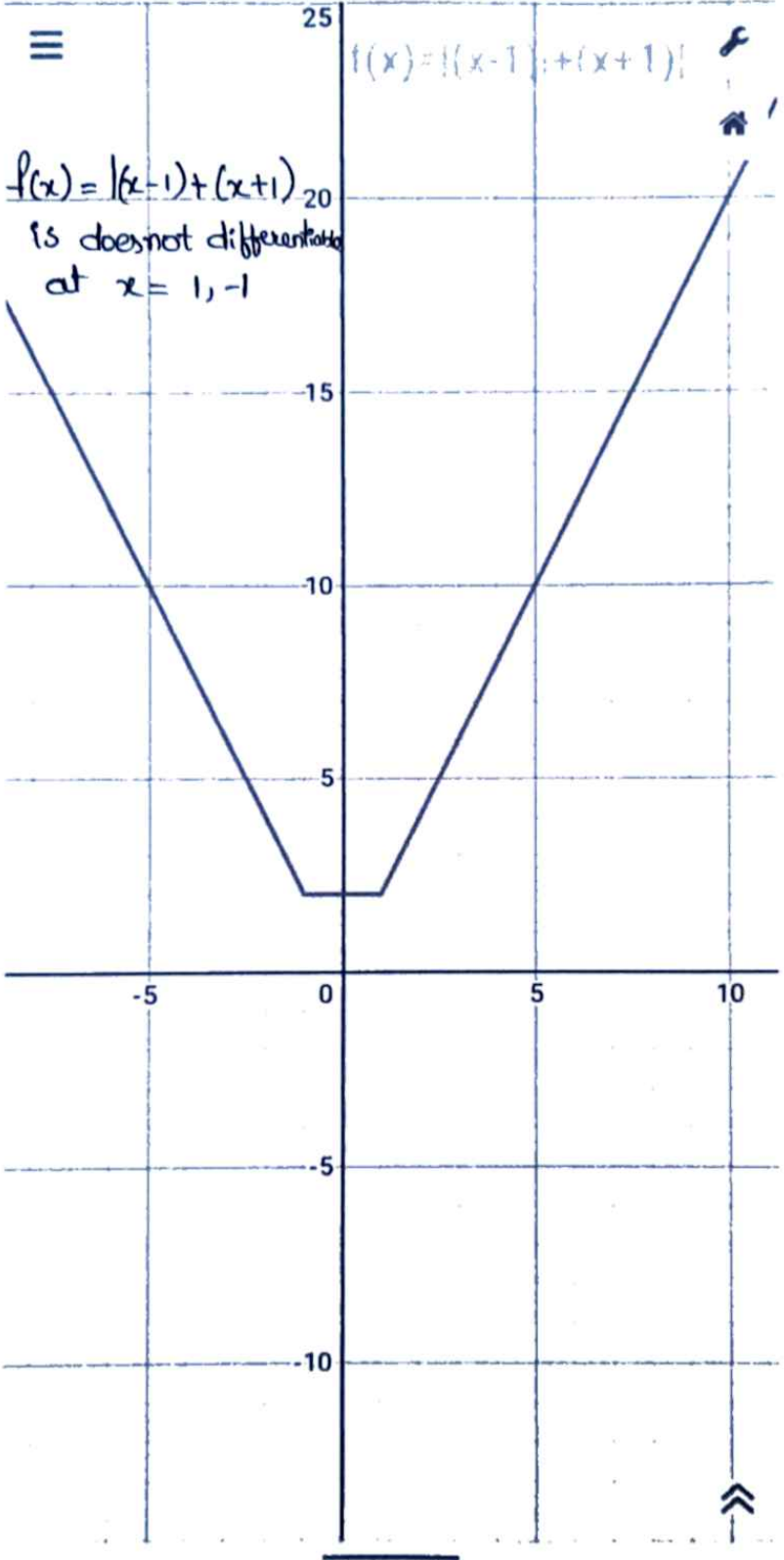
≡

$$f(x) = \cos|x|$$

$f(x) = \cos|x|$ is
differentiable for every
real number



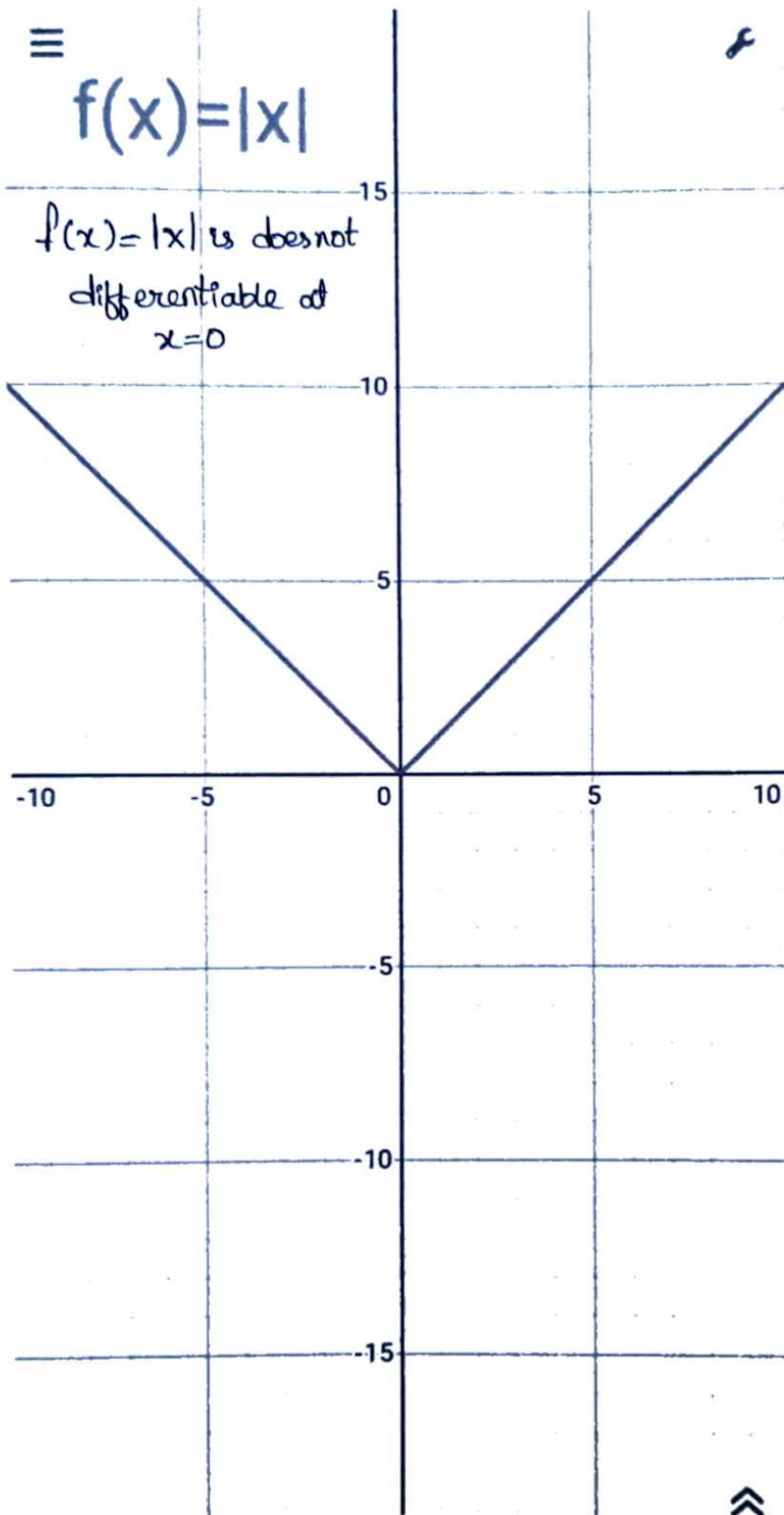
⋈



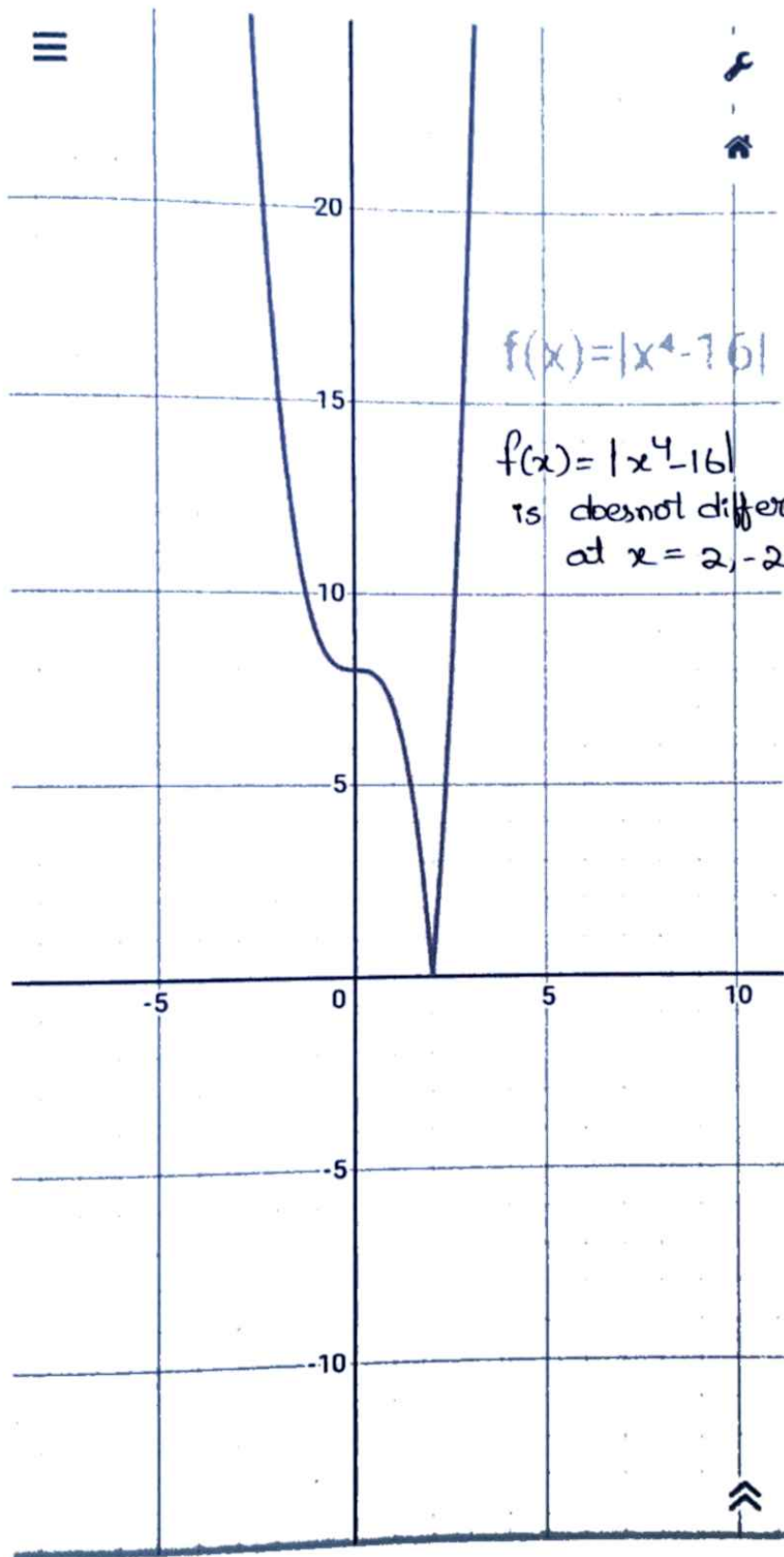
≡

$$f(x) = |x|$$

$f(x) = |x|$ is does not
differentiable at
 $x = 0$

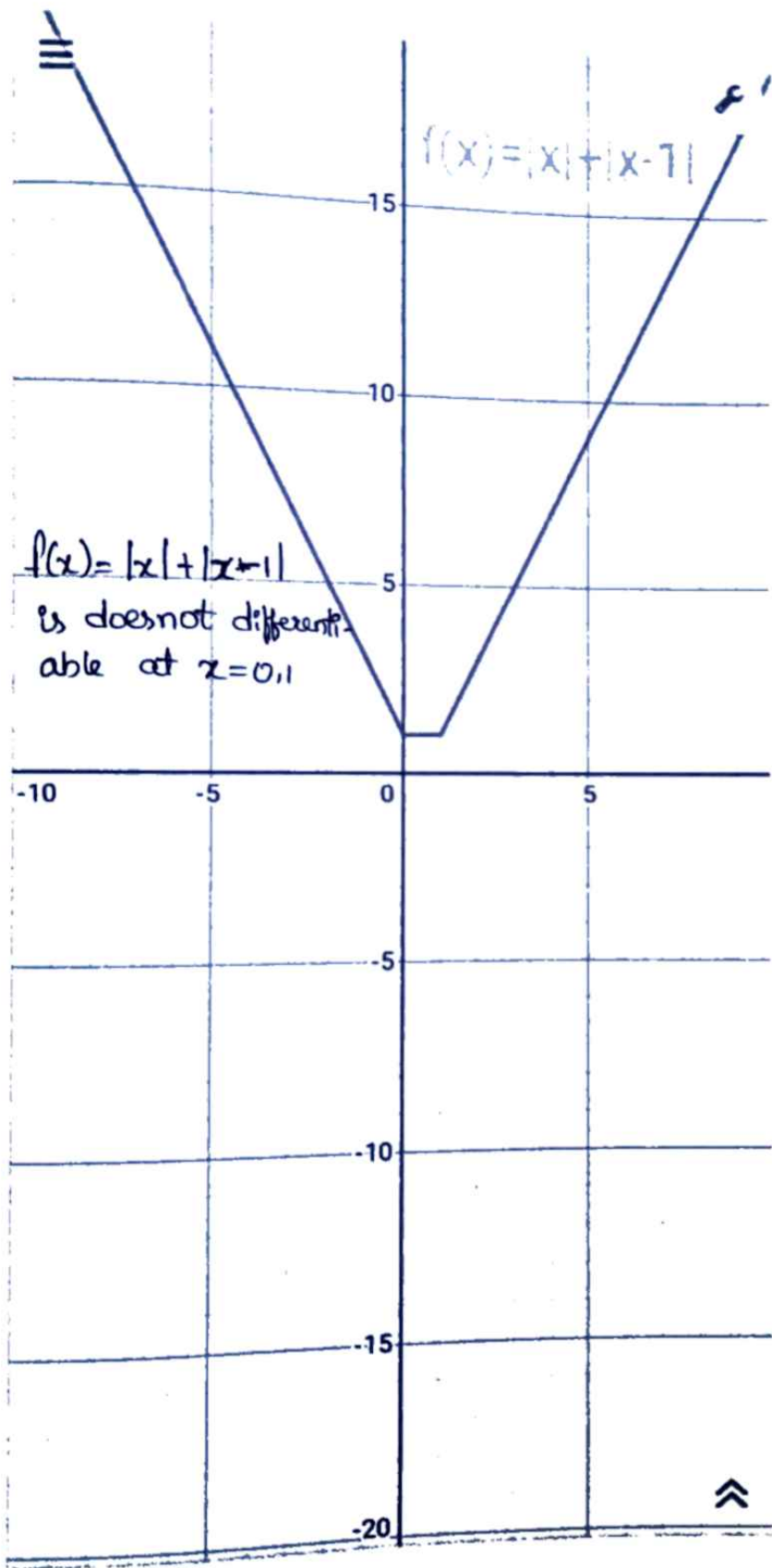


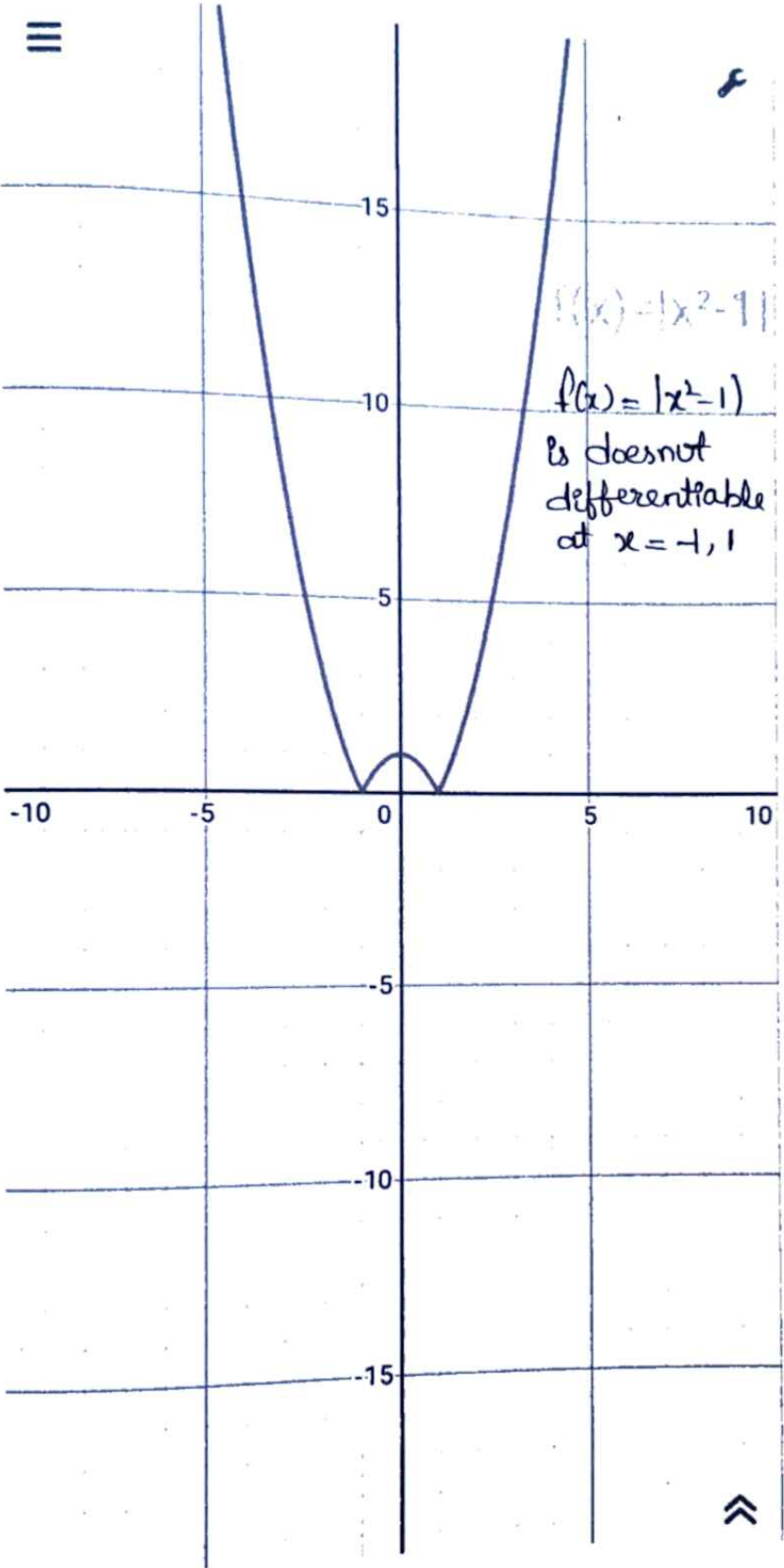
⋈

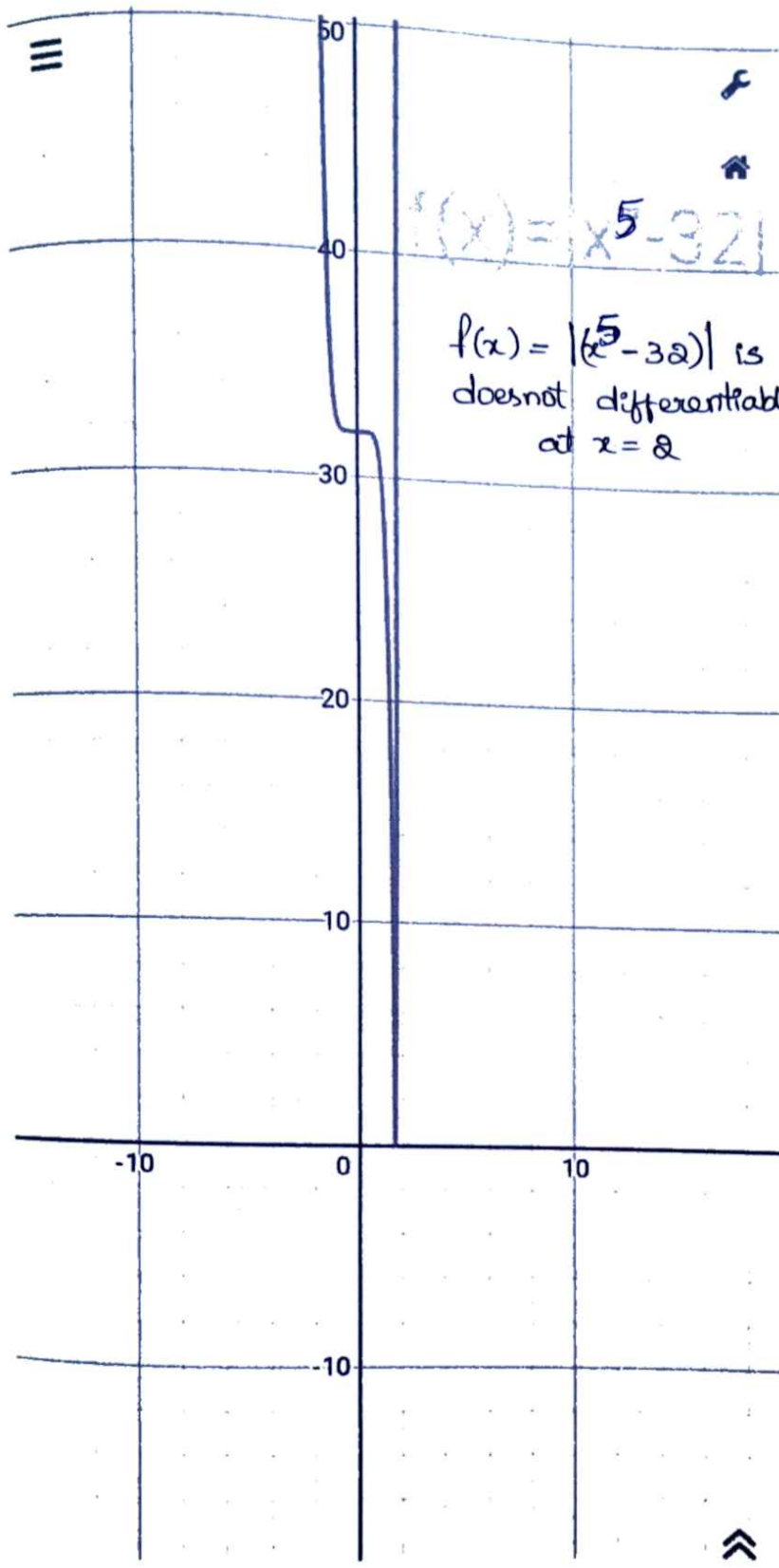


$$f(x) = |x^4 - 16|$$

$f(x) = |x^4 - 16|$
is not differentiable
at $x = 2, -2$







$$f(x) = |x^5 - 32|$$

$f(x) = |x^5 - 32|$ is
doesnot differentiable
at $x = 2$