

GOVERNMENT DEGREE COLLEGE, BHUPALPALLY

(RUSA NEW MODEL DEGREE COLLEGE)

JAYASHANKAR BHUPALPALLY DIST., T.S - 506169

(Affiliated to Kakatiya University)

Website : <http://gdcts.cgg.gov.in/bhoopalpalli.edu>

E-mail : gdcbhoopalpalli@gmail.com/

: pri-gdc-bhpl-ce@telangana.gov.in



Dr. Syam Prasad Sura

Principal (FAC)

Mobile: 9649944485

7.1.2 The Institution has facilities for measures

- Alternate sources of energy and energy conservation measures
- Management of various types of degradable and non degradable waste
- Water conservation
- Green campus initiatives
- Disabled friendly, barrier environment

ENVIRONMENT AND ENERGY USAGE

Preamble:

Energy is defined as capacity to do work. We require energy to meet our day-to-day activities. Energy in the form of electricity has a huge demand for domestic and industrial uses. Government Degree College requires electricity for lighting, laboratories, ICT facilities, computer laboratories, auditoriums, comforting equipment's, etc. 0.85 Kg of Carbon dioxide is produced for every 1KWh electricity produced. So aim at reduction in consumption of electricity reduces Carbon dioxide emission, which also reduces global warming.

Objectives:

- Reduce power consumption.
- Create indelible awareness regarding energy conservation and clean environment in all stakeholders.
- Promotion of outreach activities in neighborhood regarding energy conservation and clean environment.
- Mandatory periodic energy auditing.
- Aiming to zero discharge.


PRINCIPAL
Govt. Degree College, Bhupalpally,
Dist: Jayashankar Bhupalpally-506169



Mission:

- Insisting to switch of lights and fans when not in use. Sai
- Conducting awareness programs like guest lectures, quiz competitions , movies, street play's, poster making, short film making on energy conservation and clean environment,
- Installing solar power plant.
- Purchasing only five star rated electrical appliances.
- Accrediting energy conservation methods from stakeholders.
- Installing active vermicomposting pits.
- Encouraging stakeholders to use bicycles.
- Ban usage of plastic in college.
- Encouraging zero liquid discharge from college.

This college is practicing following measures for energy conservation

- ✓ Creating the habit of switching off lights and fans in class rooms and staff rooms when not in use.
- ✓ This college is using whatsapp groups for conveying notices to teachers and students.
- ✓ Solar power will be used to college power. This college is going to convert the power utilization from convention to non conventional.


Management of various types of degradable and non degradable waste

Government Degree College, Bhupalpally key operations has very less impact on the environment as the college is very conscious of generating less waste and recycling it by passing it through a system that enables the used material to be reused ensuring that less natural resources are consumed.

The college has segregated waste into three parts:

1. Solid Waste
2. Hazardous plastic Waste




PRINCIPAL
Govt. Degree College, Bhupalpally,
Dist: Jayashankar Bhupalpally-508109



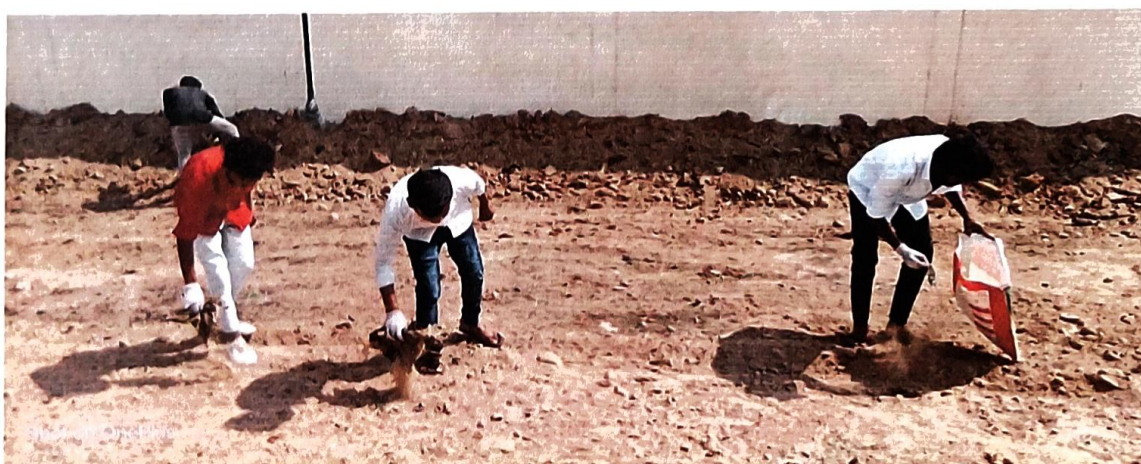
Solid Waste:

The waste is generated by all sorts of routine activities carried out in the College that includes paper, glass, metals, foods, etc. The waste is segregated at each level and source. The administrative supervisor in each block ensures that the waste in each floor is collected at designated time intervals. The college workers collect, clean, segregate and compile the waste in the dustbins (Green and Blue) provided at each floor. The floor dustbins are emptied in movable containers/dustbins provided for each block and is taken to the dumping yard provided by the College. The selected solid waste which is useful for compost is being used for compost making in the college premises.

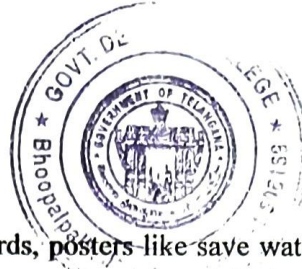


Hazardous plastic Waste

The College has contacted a vendor who collects the waste from the designated place, segregates them, recycles them and disposes them at the landfills authorized by the government.




PRINCIPAL
Govt. Degree College, Bhupalpally,
Dist: Jayashankar Bhupalpally-506169



Water conservation

Display of environment protection boards, posters like save water, save energy at prominent places waste disposal bins for wet and dry waste are some of the initiatives taken.

Rain water harvesting is being done by way of arranging rain water harvesting pits in the college premises wherever rain water flows.



Green campus initiatives :

- ✓ Many plants are being planted in the college premises.
- ✓ Many plants were requested from M/s SCCL nursery and same were planted in the college premises.
- ✓ The plants are being planted as per the advice of the forest range officers Bhupalpally based on the soil nature in this area.
- ✓ Restricted entry of Auto mobiles inside the campus.
- ✓ Promoted the use of bicycles or battery powered vehicles in the campus.
- ✓ All staff and students of college are instructed to use parking area for vehicles which is located outside of the college campus.
- ✓ To reduce emissions, the college encourages staff and students to use public transportation and bicycles.
- ✓ Many students from surrounding area are being motivated to attend college on foot to reduce emissions and also to improve the fitness of the young students.


PRINCIPAL
Govt. Degree College, Bhupalpally,
Dist: Jayashankar Bhupalpally-506169



Differently-abled friendly, barrier environment:

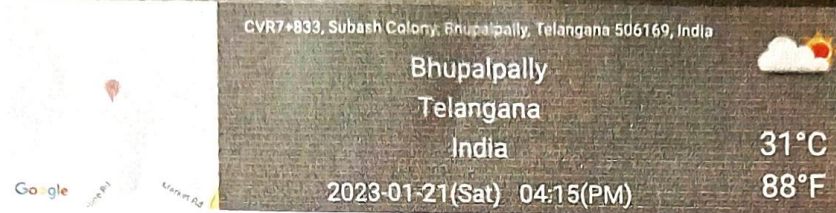
- GDC Bhupalpally is making reasonable changes to meet the particular needs of students for differently-abled students.
- Sensible convenience is being made to meet the necessities of the considerable number of students with Divyangs.
- The guidelines and regulations are being issued by the examination department for use scribe in exams.

Facilities available for differently-abled students and employees

- ❖ Ramps
- ❖ Toilets
- ❖ Western Commode
- ❖ Help desk

Our institution is committed to providing equal opportunities for all students, including those with disabilities. To this end, we have special facilities and accommodations available for differently abled students, such as entrance ramps. Our college recognizes our social responsibility to respect and treat differently abled students as normal human beings. As part of this commitment, we offer wheelchair accessibility to enable users with disabilities to move freely throughout our campus. Apart from these our college has western commodes.


PRINCIPAL
 Govt. Degree College, Bhupalpally,
 Dist: Jayashankar Bhupalpally-506169



Ramp available for Divyang Jan



Wheel chair Available for Divyangjan

[Handwritten Signature]
PRINCIPAL
 Govt. Degree College, Bhupalpally,
 Dist: Jayashankar Bhupalpally-506165

R. Shivakumar

CASH BILL

Cell: 90000 56908



VISHWAGAYATHRI MEDICAL AGENCIES



KLN Reddy Colony, Hanamkonda.

No. 3818

Date: 14/8/2019

Sri Alumni Association G.D.C.

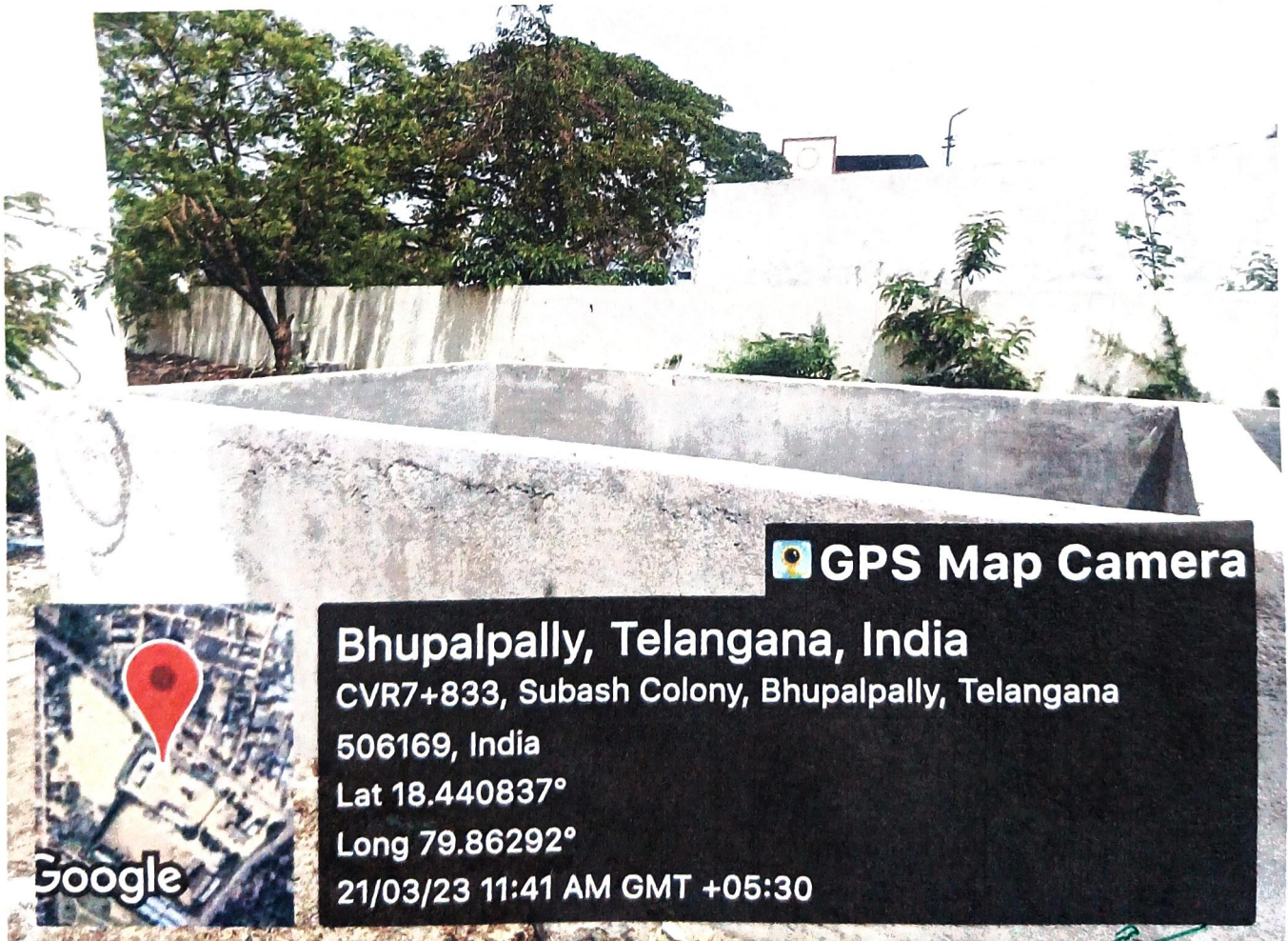
Bill No.	Amount
	Bhusa Pally
	Wheel chair = 56.55
	Paid
	/
	TOTAL 56.55
Thank You	Signature

PRINCIPAL
Govt. Degree College, Bhubalpally,
Dist. Jayashanker Bhubalpally-506160

Water conservation

Display of environment protection boards, posters like save water, save electricity, at prominent places waste disposal bins for wet and dry waste are some of the initiatives taken.

Rain water harvesting is being done by way of arranging rain water harvesting pits in the college premises wherever rain water flows.



 **GPS Map Camera**

Bhupalpally, Telangana, India

CVR7+833, Subash Colony, Bhupalpally, Telangana

506169, India

Lat 18.440837°

Long 79.86292°


21/03/23 11:41 AM GMT +05:30

Google

PRINCIPAL
Govt. Degree College, Bhupalpally,
Dist: Jayashankar Bhupalpally-506169



SOLAR PANELS FIXED FOR COLLEGE POWER


PRINCIPAL
Govt. Degree College, Bhupalpally,
Dist: Jayashankar Bhupalpally-506169



CIRCULARS

Circular On Restricted Of Vehicles Entry Inside The Campus

GOVERNMENT DEGREE COLLEGE, BHUPALPALLY CIRCULAR

“Restriction Of Vehicles Entry inside the Campus”

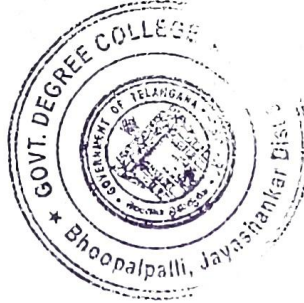
Separate vehicle parking facilities are available inside the campus for both staff and students for two wheelers and four wheelers. All the staff and students are informed to park their vehicles in the designated parking area near to the college main gate in a disciplined manner.


principal

PRINCIPAL
Govt. Degree College, Bhupalpally,
Dist: Jayashankar Bhupalpally-506169

Copy to:

- HODs for information.
- The notice board of all the departments.
- Be readout in classrooms for student information.



Circular On No Plastic Usage

GOVERNMENT DEGREE COLLEGE, BHUPALPALLY

CIRCULAR

“Restriction on use of Single use of Plastic”

All the staff and students are hereby informed that Please be advised that we encourage you to develop the habit of avoiding the use of single-use plastic items. This includes items such as plastic bags, straws, and utensils. We urge you to consider using reusable alternatives or opting for eco-friendly options whenever possible.

By making a conscious effort to reduce our consumption of single-use plastics, we can significantly contribute to the protection of our environment and safeguard the health of our planet.

Thank you for your cooperation and commitment to this important cause.

Copy to:

- HODs for information.
- The notice board of all the departments.
- Be readout in classrooms for student information.


Principal
PRINCIPAL
Govt. Degree College, Bhupalpally,
Dist: Jayashankar Bhupalpally-506103



Circular On Energy Conservation

GOVERNMENT DEGREE COLLEGE, BHUPALPALLY

CIRCULAR

“Energy Conservation”

All the staff and students are hereby informed that We would like to remind you to develop the habit of turning off lights and fans in classrooms and staff rooms when they are not in use. Your cooperation in this matter is greatly appreciated and will go a long way in reducing unnecessary energy consumption and promoting environmental sustainability

Copy to:

- HODs for information.
- The notice board of all the departments.
- Be readout in classrooms for student information.

Principal

PRINCIPAL
Govt. Degree College, Bhupalpally
Dist: Jayashankar Bhupalpally-506189

