

# GOVERNMENT DEGREE COLLEGE, BHUPALPALLY

(RUSA NEW MODEL DEGREE COLLEGE)

JAYASHANKAR BHUPALPALLY DIST., T.S - 506169

(Affiliated to *Kakatiya University*)

Website : <http://gdcts.cgg.gov.in/bhoopalpalli.edu>

E-mail : [gdcbhoopalpalli@gmail.com/](mailto:gdcbhoopalpalli@gmail.com/)

: [pri-gdc-bhpl-ce@telangana.gov.in](mailto:pri-gdc-bhpl-ce@telangana.gov.in)



**Dr. Syam Prasad Sura**  
Principal (FAC)

Mobile: 9849944485

## 7.1.2 The Institution has facilities for measures

- Alternate sources of energy and energy conservation measures
- Management of various types of degradable and non degradable waste
- Water conservation
- Green campus initiatives
- Disabled friendly, barrier environment

## This college is practicing following measures for energy conservation

- ✓ Creating the habit of switching off lights and fans in class rooms and staff rooms when not in use.
- ✓ This college is using whatsapp groups for conveying notices to teachers and students.
- ✓ Solar power will be used to college power. This college is going to convert the power utilization from convention to non conventional.

## Management of various types of degradable and non degradable waste

Government Degree College, Bhupalpally key operations has very less impact on the environment as the college is very conscious of generating less waste and recycling it by passing it through a system that enables the used material to be reused ensuring that less natural resources are consumed.

The college has segregated waste into three parts:

1. Solid Waste
2. Hazardous plastic Waste

### **Solid Waste:**

The waste is generated by all sorts of routine activities carried out in the College that includes paper, glass, metals, foods, etc. The waste is segregated at each level and source. The administrative supervisor in each block ensures that the waste in each floor is collected at designated time intervals. The college workers collect, clean, segregate and compile the waste in the dustbins (Green and Blue) provided at each floor. The floor dustbins are emptied in movable containers/dustbins provided for each block and is taken to the dumping yard provided by the College. The selected solid waste which is useful for compost is being used for compost making in the college premises.



### **Hazardous plastic Waste**

The College has contacted a vendor who collects the waste from the designated place, segregates them, recycles them and disposes them at the landfills authorized by the government.



### **Water conservation**

Display of environment protection boards, posters like save water, save energy at prominent places waste disposal bins for wet and dry waste are some of the initiatives taken.

Rain water harvesting is being done by way of arranging rain water harvesting pits in the college premises wherever rain water flows.



### **Green campus initiatives :**

- ✓ Many plants are being planted in the college premises.
- ✓ Many plants were requested from M/s SCCL nursery and same were planted in the college premises.
- ✓ The plants are being planted as per the advice of the forest range officers Bhupalpally based on the soil nature in this area.
- ✓ Restricted entry of Auto mobiles inside the campus.
- ✓ Promoted the use of bicycles or battery powered vehicles in the campus.
- ✓ All staff and students of college are instructed to use parking area for vehicles which is located outside of the college campus.
- ✓ To reduce emissions, the college encourages staff and students to use public transportation and bicycles.
- ✓ Many students from surrounding area are being motivated to attend college on foot to reduce emissions and also to improve the fitness of the young students.



**Differently-abled friendly, barrier environment:**

- GDC Bhupalpally is making reasonable changes to meet the particular needs of students for differently-abled students.
- Sensible convenience is being made to meet the necessities of the considerable number of students with Divyangs.
- The guidelines and regulations are being issued by the examination department for use scribe in exams.

**Facilities available for differently-abled students and employees**

- ❖ Ramps
- ❖ Toilets
- ❖ Western Commode
- ❖ Help desk



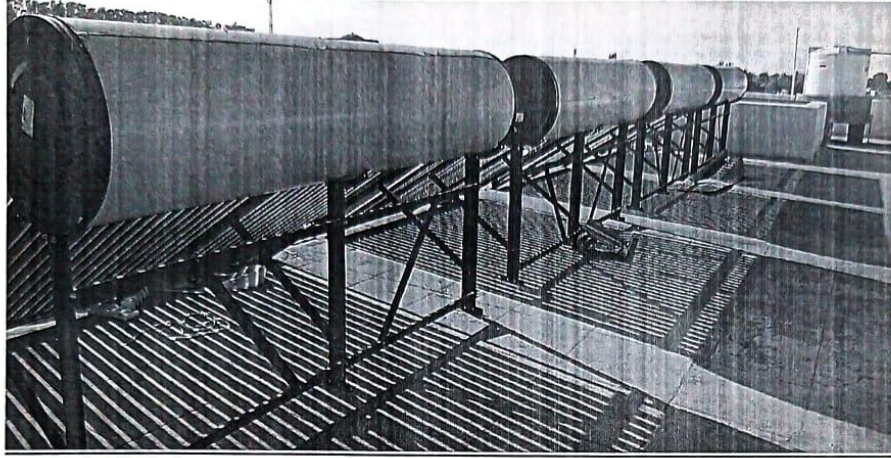
**Ramp available for Divyang Jan**



**Wheel chair Available for Divyangjan**



**SOLAR PANELS FIXED FOR COLLEGE POWER**



SOLAR PANELS FIXED FOR COLLEGE POWER

  
Principal  
Government Degree College  
Bhupalpally  
Dist: Jayashankar Bhupalpally-506108