

## CRITERION – 7

### Criterion VII - Institutional Values and Best Practices

#### Key Indicator -7.1 Institutional Values and Social Responsibilities

##### **7.1.1 – Measures initiated by the Institution for the promotion of gender equity DURING THE YEAR.**

Programs on gender equity are conducted regularly by the institution for all the students of the college to promote gender sensitization and gender equity. The college conducted “Gender Sensitization”, “Health & hygiene, Women safety” programmes etc., in which resource persons from various fields such as police department, health department, Child and Women welfare department, She teams, Sakhi department etc., with the goal of promoting educational equity and challenging assumptions and biases that have historically hindered a student's potential. The various health issues faced by both boys and girls in the teenage were addressed. Awareness on Legal rights of the students and job opportunities available after graduation were created among the students.

##### **1. Safety and security**

With the safety of women and girls being a major concern, the institution has taken proper safety and security procedures to ensure the protection and wellbeing of the students during their stay on campus,

- Activities in the college are under continuous video surveillance with 20 Digital CC cameras.
- A proper boundary wall with fence has been built around the college campus with single gate for entry & exit into the College. Security personnel is on duty 24 hours a day on the premises to prevent unwanted entry.
- A medical room with two beds is available at the College. This medical facility has first-aid supplies, a sphygmomanometer, and a wheelchair. NSS units of the college organises health camps and health awareness events for students with the focus on adolescent health & menstrual hygiene; Balanced & Nutritious diet.
- The Women Empowerment Cell & the Internal complaints committee organize workshops, seminars, poster presentations, film screenings on women-related issues throughout the year to empower young women to create and open-minded tolerant & gender sensitized society.

- The College has set up different Committees to coordinate and supervise the aspects of safety and security such as:
  - *Internal Compliance Committee (ICC)* – to address and resolve issues of sexual harassment at the workplace.
  - *Grievance Redressal Committee* - to examine and assess student and faculty complaints or grievances, and to provide an effective solution based on the severity of the complaint
  - *Anti-Ragging Committee* – to ensure a Ragging Free Environment in the college Campus.
  - *Discipline Committee* – to ensure calm and peaceful academic atmosphere in the campus

## **2. Counselling**

- A well-structured Mentor-Mentee system is present at college, in which each faculty is assigned the duty of mentoring about 50-60 students to provide emotional and instrumental support, direction, and encouragement to students.

## **3. Common Rooms**

- Rest rooms are provided for both girls & boys apart from the teaching & non-teaching staff in the college. It helps to reduce stress and tension, as well as assist a student with developing coping skills so he/she can maintain control in triggering situations. The goal is to empower students with a space in which to practice self-directed behavior.

## **4. Day Care Centre for young children**

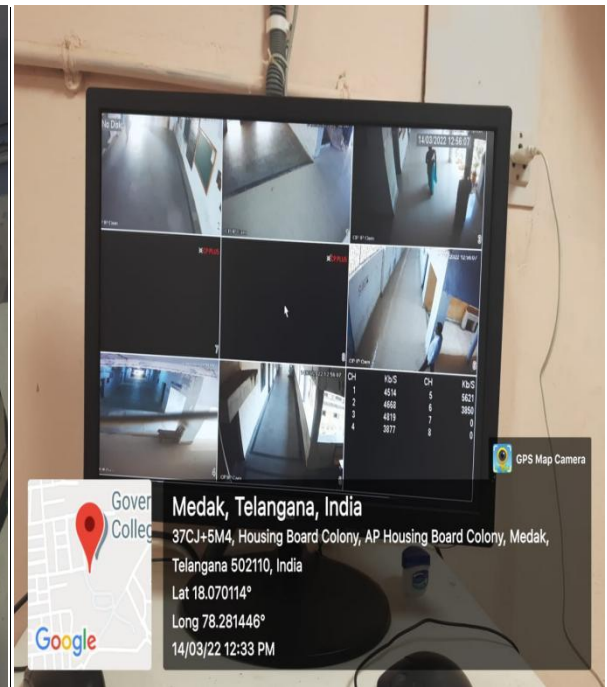
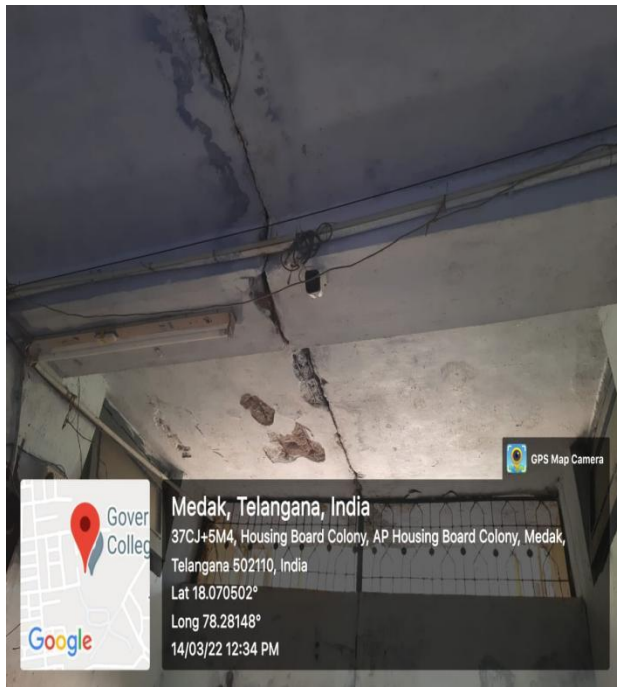
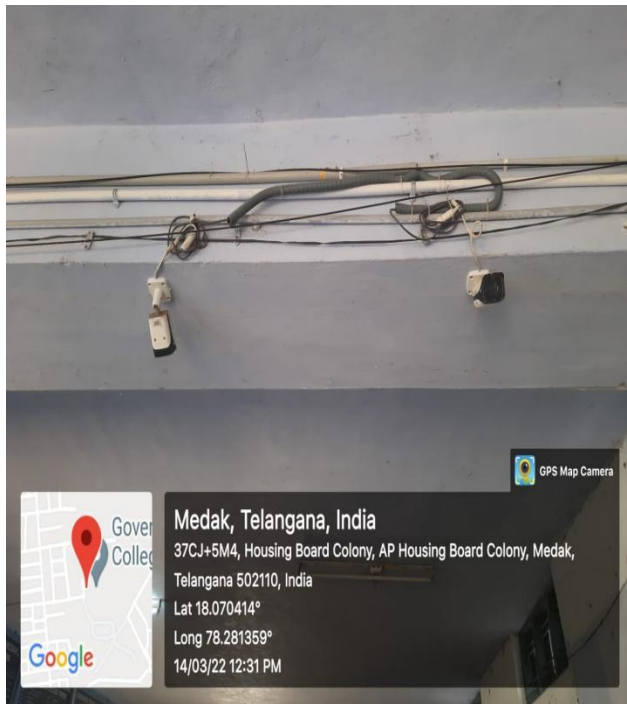
- College provides Day care centre for infants and toddlers, preschoolers, and school-aged children. This facility is availed by both the teaching & non teaching staff, as well as the students who appear for exams when they come from far places with their kids. It provides supervision and care of infants and young children during the daytime, particularly so that their parents can hold jobs.

### ***Provide Web link to:***

- Annual gender sensitization action plan

# 1. Safety and security

## CC CAMERAS AND FOOTAGE SCREEN SET UP IN THE COLLEGE PREMISES



## Safety measures and fencing around the surroundings of the campus



## 2. Counseling -Regular Health Checkup and 108 services during emergency







**Nappy Wending Machine**

### **3. Common Rooms -RETIRING/REST ROOM IN THE CAMPUS**

Common Rooms are provided for girl students with a good ventilation facility and rest rooms where the girl students can sit, rest and have recreation. A lady attendant takes care of the students' needs in case of emergencies. First Aid and wheelchair are provided for the access and benefit of the students.



**Beds to rest in health room**



**Wheel Chair and first aid medicines**

### **3. Day care centre for young children**



